



NOTE: Parts are no longer available for this tool.

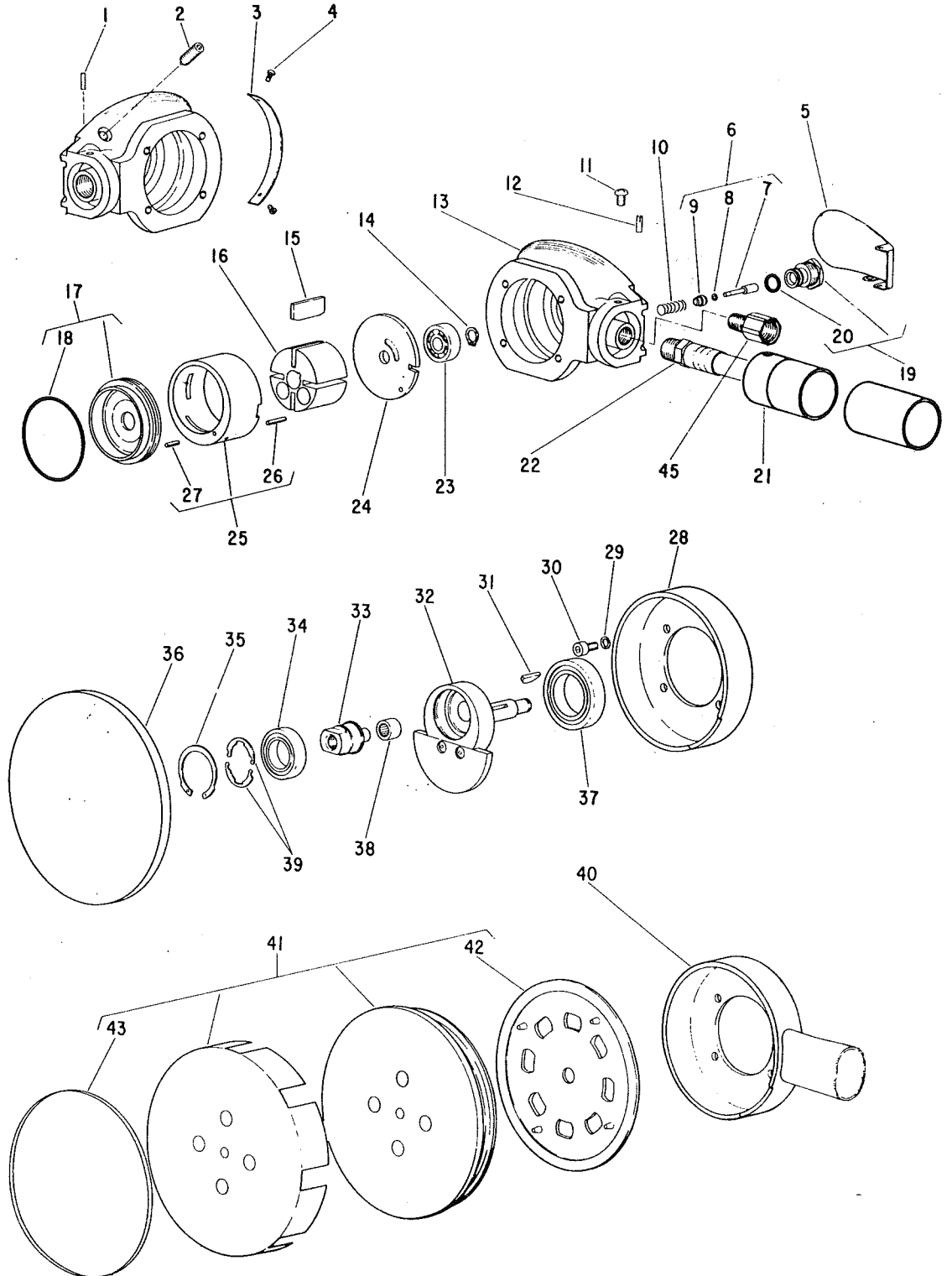
The manual will continue on the next page.



Parts List For Sioux No. 590, 590V ORBITAL DISC SANDER

Form A588
Dated 5/79

Furnish Catalog and Serial Number When Ordering Parts
[Serial No.'s. Up To & Including "B"]



Parts List For Sioux No. 590, 590V ORBITAL DISC SANDER

[SER. NO'S. UP TO & INCLUDING "B"]

Furnish Catalog, Serial and Model Number When Ordering Parts

Fig- ure	Part No.	Name	Fig- ure	Part No.	Name
1.	30323	Pin—Roll (1/16" x 3/8")	22.	1359	Assy.—Leader Hose
2.	08035	Screw—Throttle Adj. (1/4"-20)	23.	10108	Bearing—Ball
3.	20440	Plate—Name (590)	24.	11362	Plate—Upper End
	20441	Plate—Name (590V)	25.	53911	Assy.—Cylinder
4.	09954	Screw—Drive (#0 x 3/16" (2)*)	26.	30324	Pin—Roll (3/32" x 9/16")
5.	25973	Lever—Valve	27.	30235	Pin—Roll (3/32" x 3/8")
6.	53893	Assy.—Valve	28.	35528	Shroud (590)
7.	34900	Plunger—Valve	29.	09724	Washer—Lock (#10) (4)*
8.	25957	Washer	30.	07090	Screw—Soc. Hd. (10-24 x 3/8") (4)*
9.	14350	Valve—Rubber	31.	30001	Key—Woodruff
10.	21372	Spring—Throttle Valve (Up To Ser. "B")	32.	53887	Spindle—Rotor (Incl.'s Fig. 38)
11.	06672	Screw—Rd. Hd. (#8-32 x 1/4") (2)*	33.	54666	Spindle—Pad
12.	30252	Pin—Groove (1/8" x 3/8") (2)*	34.	10286	Bearing—Ball
13.	12409	Housing (Incl.'s. Fig's. 10 & 45)	35.	21799	Ring—Retaining
14.	21470	Ring—Retaining	36.	528	Backing Pad (590)
15.	33597	Vane—Rotor (Set of 4)	37.	10287	Bearing—Ball
16.	54668	Rotor	38.	10069	Bearing—Needle
17.	53909	Assy.—Lower End Plate	39.	21800	Ring—Retaining
18.	14339	Ring—"O"		21805	Ring—Retaining (Crescent Shape)
19.	53910	Assy.—Valve Plunger Guide	40.	53889	Assy.—Shroud & Tube (590V)
20.	14311	Ring—"O"	41.	830	Assy.—Backing Pad (5") (590V)
21.	53977	Assy.—Exhaust Hose	42.	40054	Plate—Top (5") (590V)
			43.	40045	Ring—Elastic (For 5" Pad) (590V)
			44.	35532	Wrench—1/2" (Not Shown)
			45.	54056	Adaptor (Ser. No's. Starting With "B")

*Order Quantity As Needed

SIOUX TOOLS INC.

2901 FLOYD BOULEVARD ■ SIOUX CITY IOWA 51102 ■

PRINTED IN U.S.A.

This pdf incorporates the following model numbers:

590, 590V