



NOTE: Parts are no longer available for this tool.

The manual will continue on the next page.

Parts List For 254, 254A, 256, 259 Double Insulated, Reversing Electric Screwdrivers

Furnish Catalog, Serial and Model Number When Ordering Parts

Fig- ure	Part No.	Name	Fig- ure	Part No.	Name
1	1G202	Assy.—Cord	52	10291	Ball (8)* (256)
2	1G203	Cover	53	54071	Jaw—Clutch (256)
3	1G204	Screw (4)*	54	54074	Retainer—Ball (256)
4	1G205	Housing	55	21762	Ring—Retaining (256)
5	1G206	Switch	56	41250	Spring (256)
6	1G207	Screw (4)*	57	53076	Assy.—Bit Holder (256)
7	1G208	Wire—Lead	58	53074	Assy.—Clutch Case (256)
8	1G006	Holder—Brush (2)*	59	53099	Wrench—Adjusting (256)
9	1G007	Brush (2)*	60	54076	Protector—Thread (254, 254A, 256)
10	1G209	Wire—Lead	61	30208	Wrench—Allen (256)
11	1G210	Field	62	53511	Assy.—Depth Locator Base (Use With Figs. 64, 65 or 66) (259)
12	1G010	Bearing—Ball		53512	Assy.—Depth Locator Base (Use With Fig. 63)
13	1G011	Fan	63	54241	Nosepiece—Long Round Locator (Optional Equipment for 259)
14	1G012	Washer		14109	Cap—End
15	1G013	Bearing—Ball	64	54103	Nosepiece—Round Locator (Std.) (Optional Equipment for 259)
16	1G211	Assy.—Armature		14109	Cap—End
17	1G212	Baffle	65	54104	Nosepiece—Fastener Locator (Optional Equipment for 259)
18	1G213	Endplate—Bearing		14110	Cap—End
19	1G214	Sleeve—Bearing	66	53510	Assy.—Straddle Nosepiece (Optional Equipment for 259)
20	1G215	Bearing—Needle (2)*	67	44520	Finder—Retainer (254, 254A, 256)
21	1G216	Gear—Countershaft	68	41251	Spring—Finder (254, 254A, 256)
22	1G217	Countershaft	69	2766	Finder (Use With Bit 2748) (Optional on 254, 254A, 256)
23	1G218	Gear—Spindle		2767	Finder (Use With Bit 2749) (Optional on 254, 254A, 256)
24	1G219	Gasket		2768	Finder (Use With Bit 2736) (Optional on 254, 254A, 256)
25	1G220	Case—Gear		2769	Finder (Use With Bit 2738) (Optional on 254, 254A, 256)
26	1G221	Ring—Retaining		2777	Finder (Use With Bit 2742) (Optional on 254, 254A, 256)
27	1G222	Bearing—Ball		2778	Finder (Use With Bit 2750) (Optional on 254, 254A, 256)
28	1G223	Spindle	70	2525	Bit Holder—Magnetic (Std. on 259)
29	1G224	Shield—Dust	71	13230	Bushing (Magnetic Only) (Optional on 254, 254A, 256)
30	1G225	Ring—Retaining	72	21774	Ring—Retaining
31	54659	Housing	73	07100	Screw—Retaining (#10-32 L.H. Th'd.)
32	54657	Nut			NOT SHOWN
33	54660	Adaptor—Spindle		1G401	Plate—Name (254)
34	34856	Roller (4)* (254)		1G551	Plate—Name (254A)
35	34854	Ring—Retainer (254)		1G451	Plate—Name (256)
36	33630	Assy.—Roller Cage (254)		1G501	Plate—Name (259)
37	21500	Ring—Retaining (254-1, 254A-2 & 259-2)*			
38	21379	Spring (254, 254A & 259)			
39	10902	Ball (254-1, 254A-1, 256-10 & 259-1)*			
40	25854	Ring—Retainer			
41	33631	Assy.—Drive Socket (254)			
42	14281	Ring—"O"			
43	53100	Assy.—Clutch Case (254, 254A & 259)			
44	44662	Jaw—Clutch (254A-2 & 259-2)*			
45	43452	Assy.—Drive Socket (254A & 259)			
46	53095	Nut—Adjusting (256)			
47	54073	Washer—Index (256)			
48	35273	Washer (256)			
49	41249	Spring—Compression (256)			
50	54072	Guide—Spring (256)			
51	22669	Spindle—Clutch (256)			

*Order Quantity As Needed



SIOUX TOOLS INC.

2901 FLOYD BOULEVARD ■ SIOUX CITY, IOWA 51102 ■

PRINTED IN U.S.A.

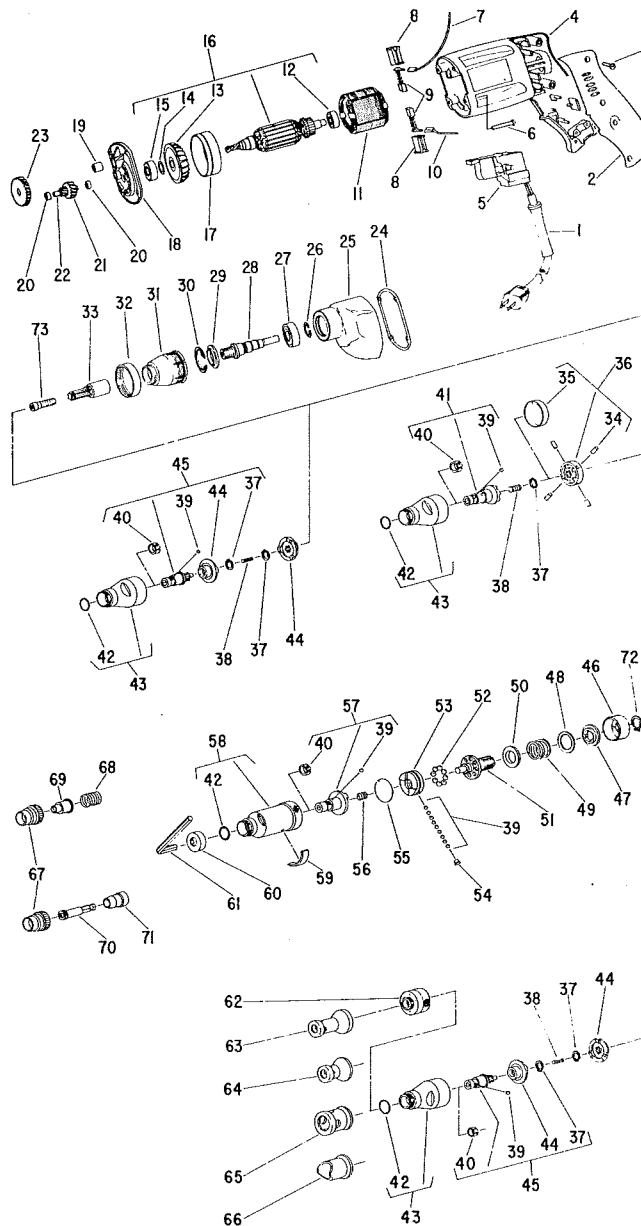


**SIoux
TOOLS INC.**

2901 FLOYD BOULEVARD ■ SIOUX CITY, IOWA 51102 ■

Form No. A582
Dated 1-78

Parts List For 254, 254A, 256, 259 Double Insulated, Reversing Electric Screwdrivers



Furnish Catalog, Serial and Model Number When Ordering Parts

This pdf incorporates the following model numbers:

254, 254A, 256, 259