



**NOTE: Parts are no longer available for this tool.**

**The manual will continue on the next page.**

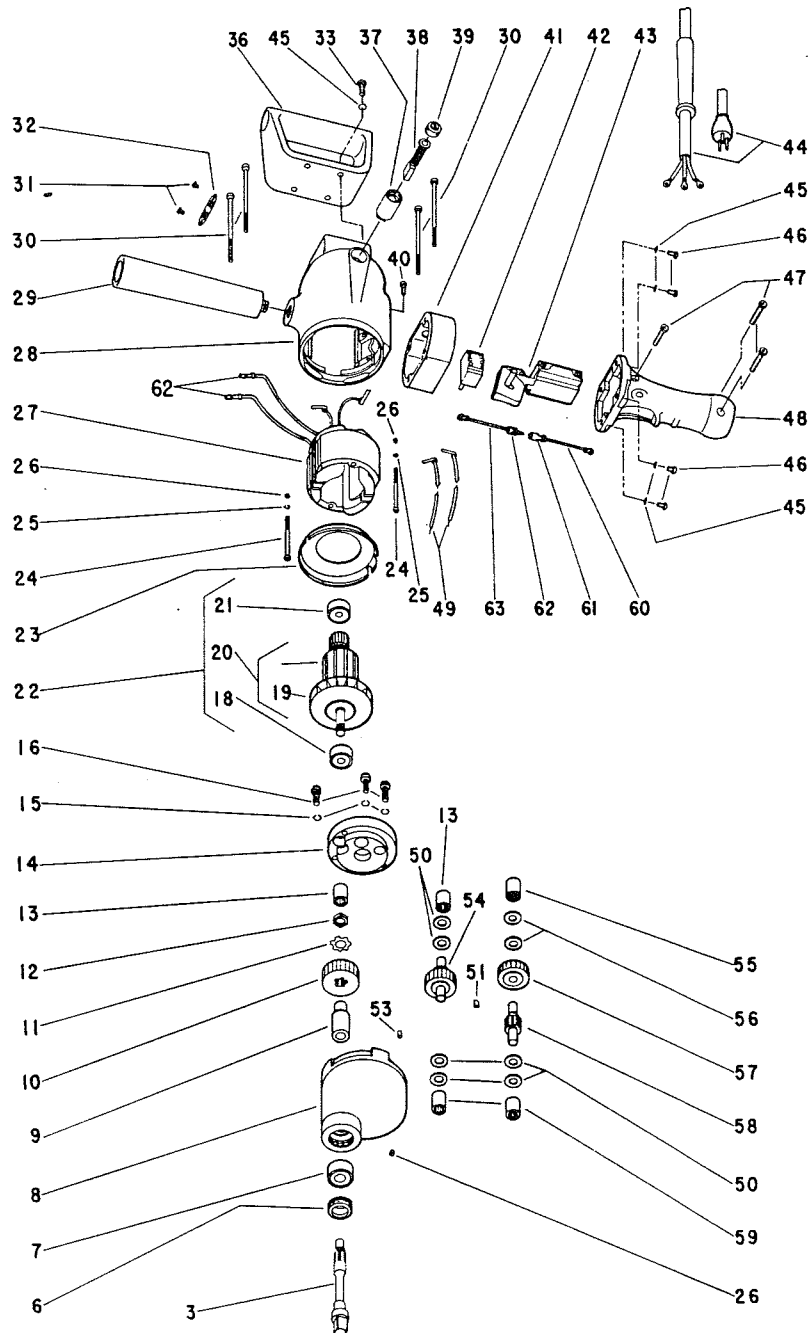


**SIoux  
TOOLS INC.**

2901 FLOYD BOULEVARD ■ SIOUX CITY, IOWA 51102 ■

Form A559E  
Dated 6/82  
Replaces Form A559D  
Dated 5/79  
E.D. 3/81

**Parts List for 1520  
Electric Power Unit, 1/2" Sq. Drive,  
410 RPM, Reversing  
Serial No. Starting With "E"**



**Furnish Catalog Number When Ordering Parts**

**Parts List for 1520**  
**Electric Power Unit, 1/2" Sq. Drive,**  
**410 RPM, Reversing**  
**Serial No. Starting With "E"**

**Furnish Catalog Number When Ordering Parts**

Fig- ure	Part No.	Name	Fig- ure	Part No.	Name
3	22654	Spindle—Tool	36	14170	Handle—Spade
6	23001	Seal—Oil	37	18075	Holder—Brush (2)*
7	10196	Bearing—Ball	38	18018	Brush—Motor (Set of 2)
8	12036	Case—Gear	39	18120	Cap—Brush Holder (2)*
9	44770	Sleeve—Chuck Spindle	40	07204	Screw—#10-24 x 5/16"
10	19210	Gear—Chuck Spindle	41	12393	Adaptor Reversing Switch
11	25055	Washer—Special Lock	42	18379	Assy.—Switch Reversing
12	24038	Nut—Tool Spindle	43	18204	Switch
13	10003	Bearing—Needle (2*)	44	28096	Assy.—Cord & Terminals
14	12429	Cover—Gear Case [Incl. (1) Fig. 13 & Fig. 55]	45	35234	Washer—Flat (8)*
15	09748	Washer—Lock 1/4" (3*)	46	07240	Screw—#10-24 x 1 3/4" (4)*
16	08134	Screw—Special (1/4"-20 x 9/16") (3*)	47	06655	#8-32 x 1 1/8" (3)*
18	10289	Bearing—Ball	48	53786	Assy.—Handle
19	21614	Fan	49	28080	Set—Lead Wire & Clip
20		Armature with Fan Not Avail. See Fig. 22	50	25053	Washer—Thrust (6)*
21	10190	Bearing—Ball	51	30010	Key—#2 Woodruff
22	16855	Armature with Fan & Bearings	53	24009	Pin—Dowel
23	25044	Plate—Baffle	54	19211	Pinion—2nd Compound
24	07136	Screw—#10-24 x 2 1/8" (2)*	55	10002	Bearing—Needle
25	09724	Washer—Lock #10 (2)*	56	25054	Washer—Thrust (2)*
26	0700	Screw—#10-24 x 3/16" (3)*	57	19234	Gear—1st Compound
27	28596	Field—Motor (Incl. 2 Fig. 60)	58	19441	Pinion—1st Compound
28	12418	Housing (Incl. 2 Ea. Fig. 26 & 37)	59	10004	Bearing—Needle (2)*
29	14171R	Handle—Side	60	28111	Assy.—Lead Wire (Incl. 2 Fig. 61) (2)*
30	07129	Screw—#10-24 x 3 3/4" (4)*	61	28084	Plug—Bullet (Female) (2)*
31	06090	Screw—#4 x 1/2" (4)*	62	28083	Plug—Bullet (Male) (2)*
32	23000	Cap—Inspection Hole (2)*			PARTS NOT SHOWN
33	07235	Screw #10-24 x 3/4" (4)*	20438		Plate—Name
			09954		Screw—Drive (2)*

\*Order Quantity As Needed



**SIoux**  
**TOOLS INC.**

2901 FLOYD BOULEVARD ■ SIOUX CITY, IOWA 51102 ■

PRINTED IN U.S.A.

This pdf incorporates the following model numbers:

1520