



**NOTE: Parts are no longer available for this tool.**

**The manual will continue on the next page.**

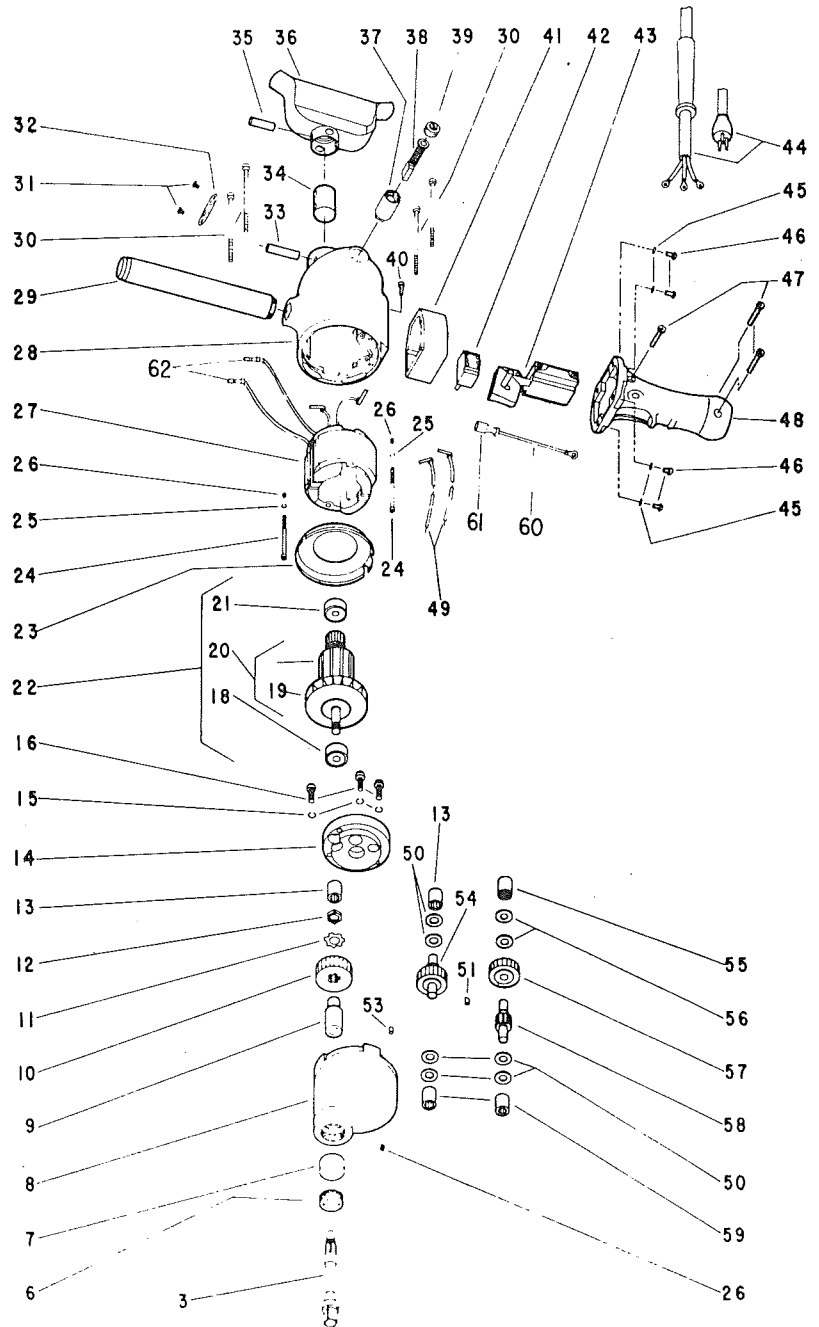


**SIoux  
TOOLS INC.**

2901 FLOYD BOULEVARD ■ SIOUX CITY, IOWA 51102 ■

Form A559D  
Dated 2/81  
Replaces Form A559C  
Dated 5/79  
E.D. 3/81

## Parts List for 1520 Electric Power Unit, 1/2" Sq. Drive, 410 RPM, Reversing Serial No. Starting with "D"



Furnish Catalog Number When Ordering Parts

# Parts List for 1520 Electric Power Unit, 1/2" Sq. Drive, 410 RPM, Reversing

Serial No's. Starting With "D"

Furnish Catalog Number When Ordering Parts

Fig- ure	Part No.	Name	Fig- ure	Part No.	Name
3	22654	Spindle—Tool	35	30761	Pin
6	23001	Seal—Oil	36	53728	Assy.—Spade Handle
7	10196	Bearing—Ball	37	18075	Holder—Brush (2)*
8	12036	Case—Gear	38	18018	Brush—Motor (Set of 2)
9	44770	Sleeve—Chuck Spindle	39	18120	Cap—Brush Holder (2)*
10	19210	Gear—Chuck Spindle	40	07204	Screw—#10-24 x 5/16"
11	25055	Washer—Special Lock	41	12393	Adaptor Reversing Switch
12	24038	Nut—Tool Spindle	42	18379	Assy.—Switch Reversing
13	10003	Bearing—Needle (2)*	43	18204	Switch
14	12429	Cover—Gear Case [Incl. (1) Fig. 13 & Fig. 55]	44	28096	Assy.—Cord & Terminals
15	09748	Washer—Lock 1/4" (3)*	45	35234	Washer—Flat (4)*
16	08134	Screw—Special (1/4"-20 x 9/16") (3)*	46	07240	Screw—#10-24 x 1 3/4" (4)*
18	10289	Bearing—Ball	47	06655	Screw—#8-32 x 1 1/8" (3)*
19	21614	Fan	48	53786	Assy.—Handle
20	28595	Armature with Fan	49	28080	Set—Lead Wire & Clip
21	10190	Bearing—Ball	50	25053	Washer—Thrust (6)*
22	16830	Armature with Fan & Bearings	51	30010	Key—#2 Woodruff
23	25044	Plate—Baffle	53	24009	Pin—Dowel
24	07136	Screw—#10-24 x 2 1/8" (2)*	54	19211	Pinion—2nd Compound
25	09724	Washer—Lock #10 (2)*	55	10002	Bearing—Needle
26	07000	Screw—#10-24 x 3/16" (3)*	56	25054	Washer—Thrust (2)*
27	28596	Field—Motor (Incl. 2 Fig. 60)	57	19234	Gear—1st Compound
28	12367	Housing (Incl. 2 Ea. Fig. 26 & 37)	58	19441	Pinion—1st Compound
29	30764	Handle—Side	59	10004	Bearing—Needle (2)*
30	07129	Screw—#10-24 x 3 3/4" (4)*	60	28111	Assy.—Lead Wire (Incl. 2 Fig. 61) (2)*
31	06090	Screw—#4 x 1/2" (4)	61	28084	Plug—Bullet (Female) (2)*
32	23000	Cap—Inspection Hole (2)*	62	28083	Plug—Bullet (Male) (2)*
33	30763	Pin			PARTS NOT SHOWN
34	14148	Insulator		20438	Plate—Name
				09954	Screw—Drive (2)*

\*Order Quantity As Needed



**SIoux  
TOOLS INC.**

2901 FLOYD BOULEVARD ■ SIOUX CITY IOWA 51102 ■

This pdf incorporates the following model numbers:

1520