



NOTE: Parts are no longer available for this tool.

The manual will continue on the next page.

Parts List for No. 7020

1" Impact Wrench

Furnish Catalog, Serial and Model Number When Ordering Parts

Fig- ure	Part No.	Name	Fig- ure	Part No.	Name
1	1J102	Hex. Assy. Bolt	33	1J133	Throttle Valve Spring
2	1J103	Spring Washer	34	1J134	"O" Ring Retainer
3	1J104	Throttle Lever	35	1J135	Throttle Valve Pin
4	1J105	Handle	36	1J136	"O" Ring
5	1J106	Front Gasket	37	1J137	Throttle Valve Bushing
6	1J107	Ball Bearing	38	1J138	Knock Spring
7	1J108	Spring Pin	39	1J139	Throttle Lever Pin
8	1J109	Front Cylinder Plate	40	1J140	Throttle Lever Pin
9	1J110	Spring Pin	41	1J141	"O" Ring
10	1J111	Cylinder	42	1J142	Oil Plug
11	1J112	Rotor	43	1J143	Selector Lever
12	1J389	Blade Vane Set (5 Per Set)	44	1J144	Spring Pin
13	1J114	Pilot Shaft	45	1J145	"O" Ring
14	1J115	Rear Cylinder Plate	46	1J146	Selector Valve
15	1J116	"O" Ring	47	1J147	Rear Spacer
16	1J117	Oil Seal	48	1J148	Hammer
17	1J118	Ball Bearing	49	1J149	Hammer Cage
18	1J119	Hex. Assy. Nut	50	1J150	Hammer Pin
19	1J120	Motor Case	51	1J151	Sq. 8" Extension Anvil Shank
20	1J003	Name Plate	52	1J152	Grip Handle
21	1J121	Reverse Valve Bushing	53	1J153	"O" Ring
22	1J122	Reverse Valve	54	1J154	Lock Ring
23	1J123	"O" Ring	55	1J155	Cage Bushing
24	1J124	Reverse Lever	56	1J156	Front Spacer
25	1J125	Spring Pin	57	1J157	Rear Gasket
26	1J126	Cam	58	1J158	Hammer Case
27	1J127	Steel Ball	59	1J159	Hex. Assy. Bolt
28	1J128	Spring Pin	60	1J160	Grease Plug
29	1J129	P.R. Valve	61	1J161	Toothed Lock Washer
30	1J130	"O" Ring	62	1J162	"O" Ring
31	1J131	P.R. Bushing	63	1J163	Oil Seal
32	1J132	Air Inlet Bushing			

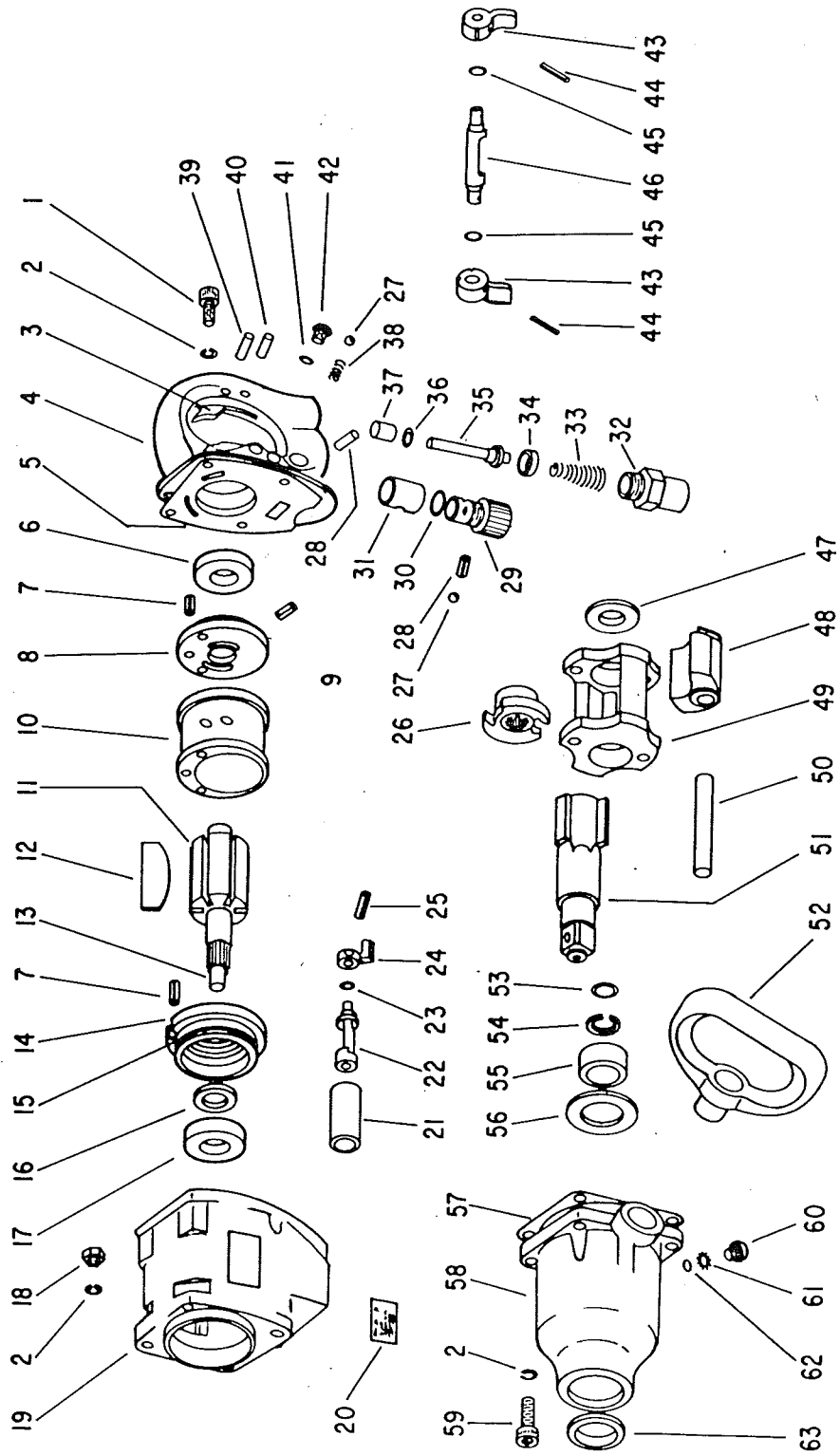
*Order Quantity As Needed

DISTRIBUTED BY SIOUX TOOLS, INC.

2901 FLOYD BOULEVARD ■ SIOUX CITY, IOWA 51102 ■

PRINTED IN U.S.A.

Parts List for No. 7020 1" Impact Wrench



FURNISH CATALOG SERIAL & MODEL NUMBER WHEN ORDERING PARTS

This pdf incorporates the following model numbers:

7020