



**NOTE: Parts are no longer available for this tool.**

**The manual will continue on the next page.**

# Parts List for No. 7000 1/2" Impact Wrench

Form A530B  
Dated 9/85

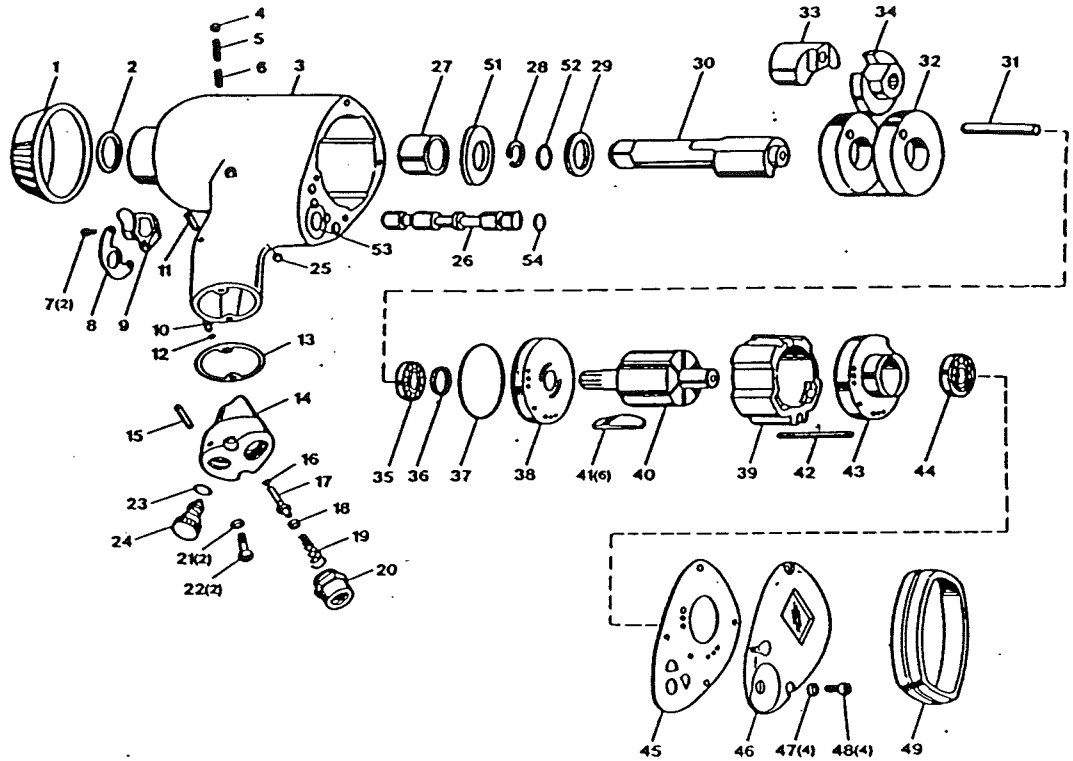


Fig- ure	Part No.	Name
1	1J036	Hammer Case Cover
2	1J035	Oil Seal
3	1J031	Housing
4	1J034	Allen Set Screw
5	1J033	Reverse Spring
6	1J032	Reverse Valve Pin
7	1J424	Screw (2)
8	1J042	Exhaust Cover
9	1J040	Throttle Lever
10	1J038	Push Pin
11	1J037	Spring Pin
12	1J039	"O" Ring
13	1J043	Valve Case Gasket
14	1J044	Valve Case
15	1J037	Spring Pin
16	14369	"O" Ring
17	1J049	Throttle Valve
18	1J050	"O" Ring Retainer
19	1J051	Throttle Valve Spring
20	1J052	Thread Sleeve
21	1J053	Spring Washer (2)
22	1J054	Hex. Assy. Bolt (2)
23	1J046	"O" Ring
24	1J047	Regulator Valve
25	1J466	Plug
26	1J029	Reverse Valve
27	1J028	Housing Bushing

Fig- ure	Part No.	Name
28	1J027	Lock Ring
29	1J026	Cage Bushing
30	1J025	Short Anvil Shank
31	1J024	Hammer Pin
32	1J021	Hammer Cage
33	1J022	Hammer
34	1J023	Cam
35	10226	Ball Bearing
36	1J019	Oil Seal
37	1J018	"O" Ring
38	1J017	Front End Plate
39	1J014	Cylinder
40	1J015	Rotor
41	1J392	Rotor Vanes (Set of 6)
42	1J013	Dowel Pin
43	1J012	Rear End Plate
44	10226	Ball Bearing
45	1J008	Front Gasket
46	1J007	Head Cover
47	1J006	Spring Washer (4)
48	1J005	Hex. Assy. Bolt. (4)
49	1J004	Housing Band
51	1J572	Thrust Plate
52	1J573	"O" Ring
53	1J574	Reverse Bush (Incl. No. 3)
54	1J575	Reverse "O" Ring

Furnish Catalog, Serial and Model Number When Ordering Parts

\*Order Quantity As Needed

**DISTRIBUTED BY SIOUX TOOLS INC.**

2901 FLOYD BOULEVARD ■ SIOUX CITY, IOWA 51102 ■

This pdf incorporates the following model numbers:

7000