



**NOTE: Parts are no longer available for this tool.**

**The manual will continue on the next page.**

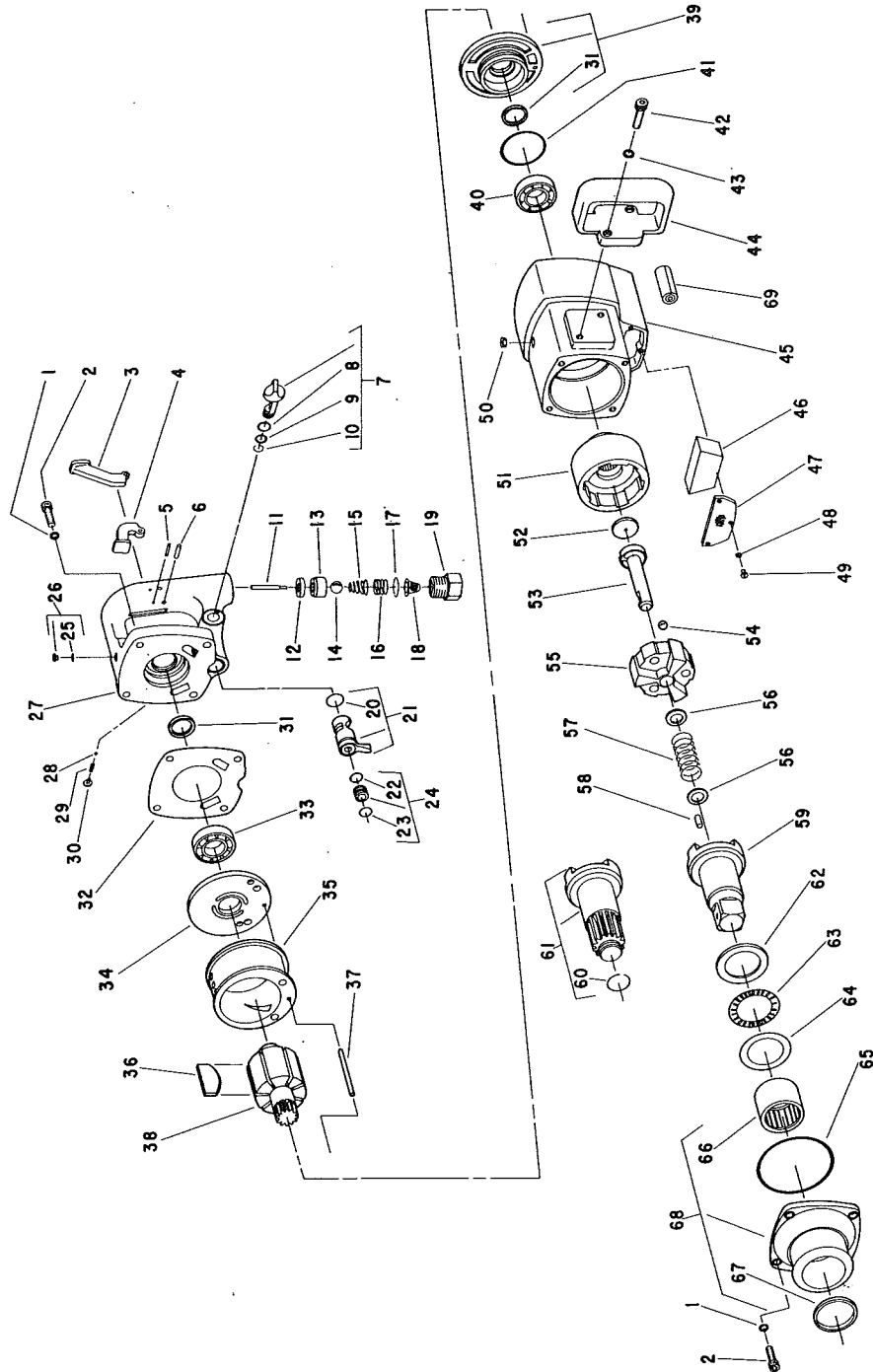


**SIoux**  
**TOOLS INC.**

2901 FLOYD BOULEVARD ■ SIOUX CITY, IOWA 51102 ■

Form A518  
Dated 8/81  
E.D. 8/81

## Parts List For 4055, 4056, 4057, 4058, 4059, & 4060 Air Impact Wrench



Furnish Catalog and Serial Number When Ordering Parts

# Parts List For 4055, 4056, 4057, 4058, 4059, & 4060 Air Impact Wrench

Furnish Catalog and Serial Number When Ordering Parts

| Fig-<br>ure | Part<br>No. | Name                                  | Fig-<br>ure | Part<br>No. | Name                                     |
|-------------|-------------|---------------------------------------|-------------|-------------|--|
| 1           | 09768       | Washer—Lock (8)*                      | 37          | 54577       | Pin—Guide                                |
| 2           | 08845       | Screw—Soc. Hd. Cap (8)*               | 38          | 54582       | Rotor                                    |
| 3           | 11571       | Trigger—External (4058) (4059) (4060) |             | 13265       | Plug-Rotor (5)*                          |
| 4           | 11573       | Trigger—Inside (4055) (4056) (4057)   |             | 13264       | Plug-Rotor (2)*                          |
| 5           | 30219       | Pin—Roll                              | 39          | 53808       | Assy.—End Plate (Front)                  |
| 6           | 30178       | Pin—Roll                              | 40          | 10283       | Bearing—Ball                             |
| 7           | 53807       | Assy.—Control Output                  | 41          | 14310       | Ring—"O"                                 |
| 8           | 14312       | Ring—"O"                              | 42          | 08232       | Screw—Soc. Hd. Cap (2)*                  |
| 9           | 14290       | Ring—"O"                              | 43          | 09750       | Washer—Lock (2)*                         |
| 10          | 21751       | Ring—Retaining                        | 44          | 12390       | Handle—Auxiliary                         |
| 11          | 54579       | Plunger—Valve                         | 45          | 12394       | Housing                                  |
| 12          | 04262       | Seat—Throttle Valve                   | 46          | 14150       | Pad—Silencer                             |
| 13          | 13289       | Retainer—Valve Seat                   | 47          | 30771       | Screen—Exhaust                           |
| 14          | 10904       | Ball—Steel 9/16" Dia.                 | 48          | 09712       | Washer—Lock (3)*                         |
| 15          | 41302       | Spring—Valve                          | 49          | 06650       | Screw—Pan Hd. (3)*                       |
| 16          | 41231       | Spring                                | 50          | 30246       | Plug—Pipe                                |
| 17          | 21512       | Ring—Retaining                        |             | 40019       | Hanger—Eyebolt                           |
| 18          | 33736       | Assy.—Screen                          | 51          | 54570       | Driver—Hammer                            |
| 19          | 54580       | Bushing—Air Inlet                     | 52          | 54576       | Washer—Thrust                            |
| 20          | 14378       | Ring—"O"                              | 53          | 54573       | Cam                                      |
| 21          | 53809       | Assy.—Reversing Valve                 | 54          | 10293       | Ball—Steel 13/32" Dia.                   |
| 22          | 14340       | Ring—"O"                              | 55          | 54571       | Hammer                                   |
| 23          | 14309       | Ring—"O"                              | 56          | 54578       | Washer (2)*                              |
| 24          | 53810       | Assy.—Sleeve Seal                     | 57          | 41286       | Spring                                   |
| 25          | 14369       | Ring—"O"                              | 58          | 30458R      | Pin                                      |
| 26          | 44253       | Oiler Screw                           | 59          | 54574       | Anvil 1" Sq. (4055) (4058)               |
| 27          | 53811       | Handle—Includes Figs. 26 & 31         |             | 54596       | Anvil 1" Sq. (6" Ext.) (4056) (4059)     |
| 28          | 10900       | Ball—Steel 9/64" Dia.                 | 60          | 21538       | Ring—Soc. Retainer (4057) (4060)         |
| 29          | 21432       | Spring                                | 61          | 54575       | Assy.—Anvil Spline (4057) (4060)         |
| 30          | 07202       | Screw—Phil. Rd. Hd.                   | 62          | 54572       | Washer—Thrust                            |
| 31          | 30768       | Seal (2)*                             | 63          | 10032       | Bearing—Needle                           |
| 32          | 05018       | Gasket                                | 64          | 10033       | Seat—Needle Bearing                      |
| 33          | 10238       | Bearing—Ball                          | 65          | 04268       | Ring—"O"                                 |
| 34          | 11430       | End Plate—Rear                        | 66          | 10067       | Bearing—Roller                           |
| 35          | 54790       | Cylinder                              | 67          | 30767       | Seal                                     |
| 36          | 53812       | Vane—Rotor (Set of 7)                 | 68          | 53788       | Assy.—Hammer Case                        |
|             |             |                                       | 69          | 14154       | Liner—Silencer (3)*                      |
|             |             |                                       | NS          | 14319       | Ring—"O"—For 54574, 54596 & 54575 Anvils |
|             |             |                                       | NS          | 34665       | Retainer Pin —For 54574 & 54596 Anvils   |
|             |             |                                       | NS          | 54834       | Retainer Pin For 54575                   |

NS—Not Shown

\*Order Quantity As Needed



**SIoux  
TOOLS INC.**

2901 FLOYD BOULEVARD ■ SIOUX CITY, IOWA 51102 ■

PRINTED IN U.S.A.

This pdf incorporates the following model numbers:

4055, 4056, 4057, 4058, 4059, 4060