



NOTE: Parts are no longer available for this tool.

The manual will continue on the next page.



SIoux
TOOLS INC.

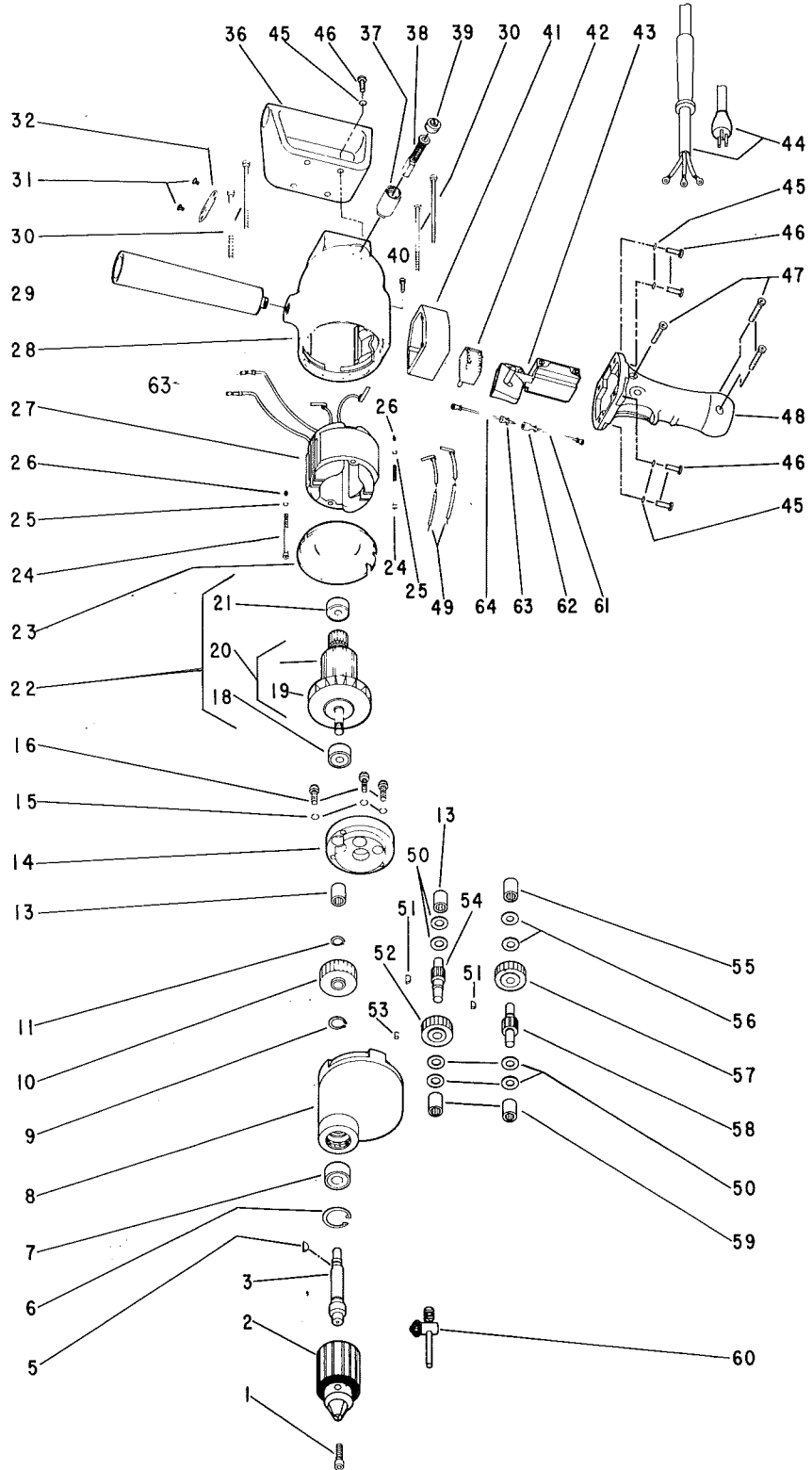
2901 FLOYD BOULEVARD ■ SIOUX CITY IOWA 51102 ■

Form A511D
Dated 6/82

Parts List for SIOUX ELECTRIC DRILLS

No. 1510, 1510R 1/2 Inch Drill

Serial No's Starting with "E"



Furnish Catalog Number When Ordering Parts

Parts List for SIOUX ELECTRIC DRILLS

No. 1510, 1510R 1/2 Inch Drill

Serial No's Starting with "E"

Furnish Catalog Number When Ordering Parts

Fig- ure	Part No.	Name	Fig- ure	Part No.	Name
1	08310	Screw—L.H. THD. (1510R)	39	18120	Cap—Brush Holder (2)*
2	21004	Chuck (1510)	40	07204	Screw—#10-24 x 5/16"
	21128	Chuck (1510R)	41	12393	Adaptor Reversing Switch (1510R)
3	22682	Spindle—Chuck (1510)	42	18383	Assy.—Switch Reversing (1510R) (Includes Fig. 61 & 64)
5	30001	Key—Woodruff (#304)		30697	Locknut—Hex (2)*
6	21802	Ring—Retaining	43	18204	Switch
7	10265	Bearing—Ball	44	18416	Assy.—Cord & Terminals
8	12428	Case—Gear		18417	Assy.—Cord & Terminals (30 ft.)
9	21803	Ring—Retaining	45	35234	Washer—Flat (8)*
10	19239	Gear—Chuck Spindle	46	07236	Screw—#10-24 x 3/4" (8)* (1510)
11	21460	Ring—Retaining		07240	Screw—#10-24 x 1 3/4" (4)* (1510R)
13	10003	Bearing—Needle (2)*	47	06655	Screw—#8-32 x 1 1/8" (3)*
14	12429	Cover—Gear Case [Incl. (1) Fig. 13 & Fig. 55]	48	53786	Assy.—Handle
15	09748	Washer—Lock 1/4" (3)*	49	28080	Set—Lead Wire & Clip (1510R)
16	08134	Screw—Special (1/4"-20 x 9/16") (3)*	50	25053	Washer—Thrust (6)*
18	10289	Bearing—Ball	51	30010	Key—Woodruff (#304) (2)*
19	21569A	Fan	52	19034	Gear—2nd Compound
20	28697	Armature with Fan (115V)	53	24009	Pin—Dowel
	28697J	Armature with Fan (230V)	54	19405	Pinion—2nd Compound
21	10220	Bearing—Ball	55	10002	Bearing—Needle
22	16855	Armature with Fan & Bearings (115V)	56	25054	Washer—Thrust (2)*
	16855J	Armature with Fan & Bearings (230V)	57	19234	Gear—1st Compound
23	25044	Plate—Baffle	58	19407	Pinion—1st Compound
24	07117	Screw—#10-24 x 1 3/4 (2)*	59	10004	Bearing—Needle (2)*
	07136	Screw—#10-24 x 2 1/8 (2)*	60	30011	Key—Chuck
25	09724	Washer—Lock #10 (2)*		20468	Plate—Name (1510)
26	07000	Screw—#10-24 x 3/16" (2)*		09954	Screw—Drive (2)*
27	28565	Field—Motor (1510)	61	28111	Assy.—Lead Wire (Incl. Fig. 62) (2)*
	28596	Field—Motor (1510R)	62	28084	Plug - Bullet (Female) (2)*
28	12418	Housing (Incl. Fig's. 26. 37)	63	28083	Plug - Bullet (Male) (2)*
29	14171R	Handle—Side	64	28114	Ass'y.—Lead Wire 1510R (Includes Fig. 63)
30	07129	Screw—#10-24 x 3 3/4" (4)*			
31	06090	Screw—#4 x 1/2" (4)			
32	23000	Cap—Inspection Hole (2)*			
36	14170	Spade Handle			
37	18075	Holder—Brush (2)*			
38	18018	Brush—Motor (Set of 2)			

*Order Quantity As Needed



2901 FLOYD BOULEVARD ■ SIOUX CITY, IOWA 51102 ■

PRINTED IN U.S.A.

This pdf incorporates the following model numbers:

1510, 1510R,1510J, 1510JR