



NOTE: Parts are no longer available for this tool.

The manual will continue on the next page.

Parts List for SIOUX ELECTRIC DRILLS

No. 1510, 1510R 1/2 Inch Drill

Serial No.'s Starting With "D"

Furnish Catalog Number When Ordering Parts

Fig- ure	Part No.	Name
1	08310	Screw—L.H. THD. (1510R)
2	21004	Chuck (1510)
	21128	Chuck (1510R)
3	22682	Spindle—Chuck (1510)
5	30001	Key—Woodruff (#304)
6	21802	Ring—Retaining
7	10265	Bearing—Ball
8	12428	Case—Gear
9	21803	Ring—Retaining
10	19239	Gear—Chuck Spindle
11	21460	Ring—Retaining
13	10003	Bearing—Needle (2)*
14	12429	Cover—Gear Case [Incl. (1) Fig. 13 & Fig. 55]
15	09748	Washer—Lock 1/4" (3)*
16	08134	Screw—Special (1/4"-20 x 9/16") (3)*
18	10289	Bearing—Ball
19	21614	Fan
20		Armature with Fan (115V) } Not Avail. Armature with Fan (230V) } See Fig. 22
21	10190	Bearing—Ball
22	16855	Armature with Fan & Bearings (115V)
	16855J	Armature with Fan & Bearings (230V)
23	25044	Plate—Baffle
24	07117	Screw—#10-24 x 1 3/4 (2)*
	07136	Screw—#10-24 x 2 1/8 (2)*
25	09724	Washer—Lock #10 (2)*
26	07000	Screw—#10-24 x 3/16" (2)*
27	28565	Field—Motor (1510)
	28596	Field—Motor (1510R)
28	12418	Housing (Incl. Fig's. 26, 37)
29	14171R	Handle—Side
30	07129	Screw—#10-24 x 3 3/4" (4)*
31	06090	Screw—#4 x 1/2" (4)
32	23000	Cap—Inspection Hole (2)*
36	14170	Spade Handle
37	18075	Holder—Brush (2)*
38	18018	Brush—Motor (Set of 2)

Fig- ure	Part No.	Name
39	18120	Cap—Brush Holder (2)*
40	07204	Screw—#10-24 x 5/16"
41	12393	Adaptor Reversing Switch (1510R)
42	18383	Assy.—Switch Reversing (1510R) (Includes Fig. 61 & 64)
	30697	Locknut—Hex (2)*
43	18204	Switch
44	18416	Assy.—Cord & Terminals
	18417	Assy.—Cord & Terminals (30 ft.)
45	35234	Washer—Flat (8)*
46	07236	Screw—#10-24 x 3/4" (8)* (1510)
	07240	Screw—#10-24 x 1 3/4" (4)* (1510R)
47	06655	Screw—#8-32 x 1 1/8" (3)*
48	53786	Assy.—Handle
49	28080	Set—Lead Wire & Clip (1510R)
50	25053	Washer—Thrust (6)*
51	30010	Key—Woodruff (#304) (2)*
52	19034	Gear—2nd Compound
53	24009	Pin—Dowel
54	19405	Pinion—2nd Compound
55	10002	Bearing—Needle
56	25054	Washer—Thrust (2)*
57	19234	Gear—1st Compound
58	19407	Pinion—1st Compound
59	10004	Bearing—Needle (2)*
60	30011	Key—Chuck
	20468	Plate—Name (1510)
	09954	Screw—Drive (2)*
61	28111	Assy.—Lead Wire (Incl. Fig. 62) (2)*
62	28084	Plug - Bullet (Female) (2)*
63	28083	Plug - Bullet (Male) (2)*
64	28114	Ass'y.—Lead Wire 1510R (Includes Fig. 63)

*Order Quantity As Needed



2901 FLOYD BOULEVARD ■ SIOUX CITY, IOWA 51102 ■

PRINTED IN U.S.A.



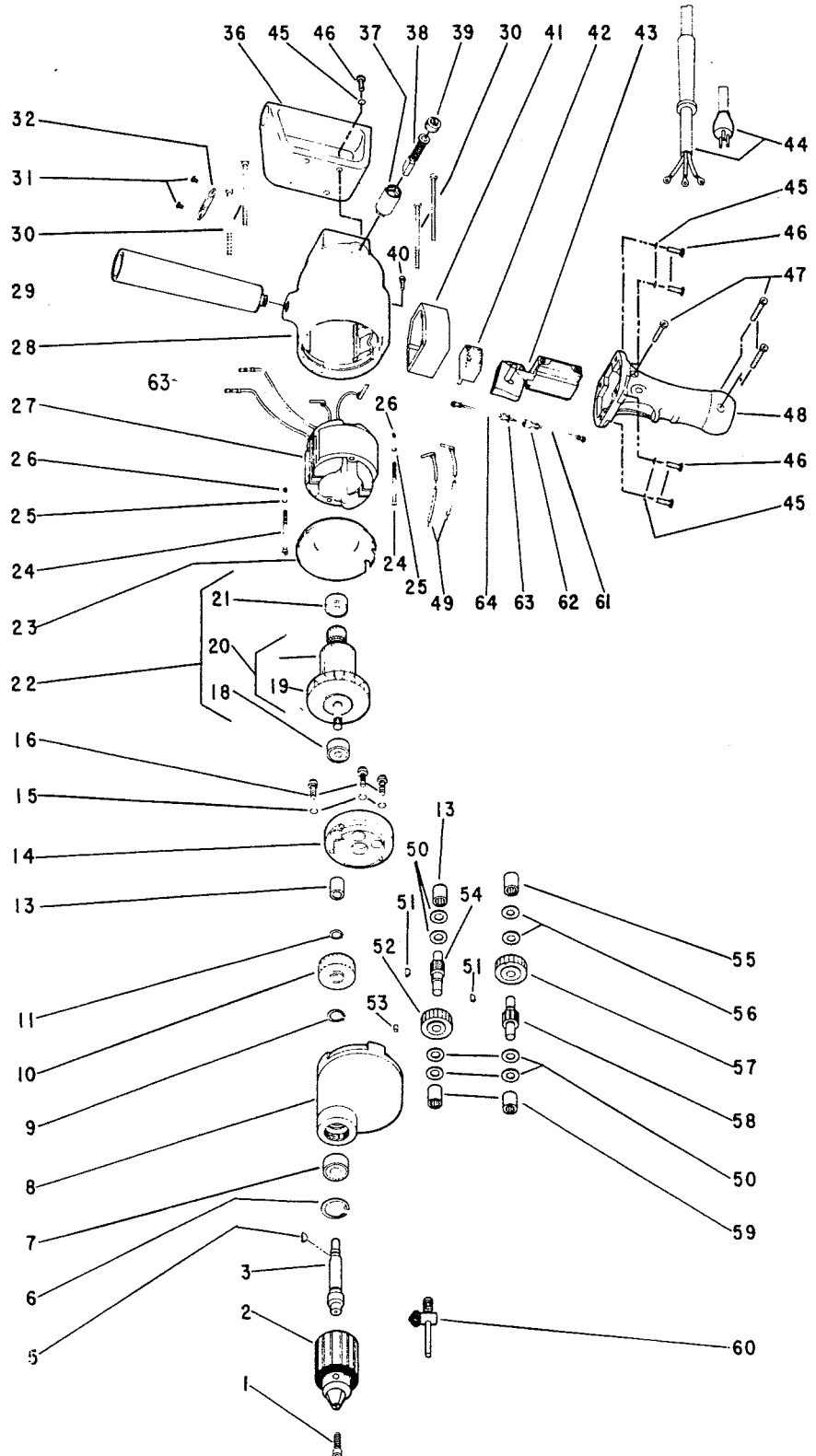
**SIoux
TOOLS INC.**

2901 FLOYD BOULEVARD ■ SIOUX CITY IOWA 51102 ■

Form A511C
Dated 6/82

Parts List for SIOUX ELECTRIC DRILLS No. 1510, 1510R 1/2 Inch Drill

Serial No.'s Starting With "D"



Furnish Catalog Number When Ordering Parts

This pdf incorporates the following model numbers:

1510, 1510R