



NOTE: Parts are no longer available for this tool.

The manual will continue on the next page.

SIoux**TOOLS**

**Parts List for No. L1960, L1970
HIGH SPEED AIR GRINDER
Ser. No's. Starting With "J"**

Furnish Catalog and Serial Number When Ordering Parts

Fig- ure	Part No.	Name	Fig- ure	Part No.	Name
1	21541	Ring - Retainer	24	44666	Housing
2	30463	Screen	25	21491	Ring—Retaining
3	43154	Assy.—Adaptor & Screen	26	10230	Bearing—Ball
4	35192	Bail	27	13161	Plate—Upper End
5	35260	Washer	28	44513	Rotor
6	14125	Deflector	29	33737	Vane—Rotor (Set of 4)
7	30470	Screen	30	33740	Assy.—Cylinder & Pins
8	14764	Felt	31	13173	Plate—Lower End
9	05019	Felt (With Holes)	32	10220	Bearing—Ball
10	07140	Screw (4) *	33	10239	Bearing—Ball
11	14313	Ring—"O"	34	44089	Spacer
12	43504	Assy.—End Cap & "O" Ring	35	54525	Spindle
13	30362	Pin—Roll	36	10240	Bearing—Ball
14	14734	Gasket	37	54424	Case—Gear
15	25988	Lever	38	54527	Ring—Grip (L1960)
16	14291	Ring—"O"	39	2311	Guard (L1960)
17	43508	Assy.—Valve Seat & "O" Ring	40	54526	Hub—Grinding Wheel (L1960)
18	25957	Washer	41	54536	Retainer—Grinding Wheel (L1960)
19	14350	Valve	42	54613	Ring—Grip (L1970)
20	43462	Assy.—Valve	43	54614	Hub (L1970)
21	21429	Spring	44	2310	Guard (L1970)
22	14394	Ring—"O"	45	54615	Retainer—Grinding Wheel (L1970)
23	43457	Assy.—Speed Control & "O" Ring			

* Order Quantity As Needed

**SIoux TOOLS INC.
SIoux CITY, IOWA, U.S.A. 51102**

SIoux

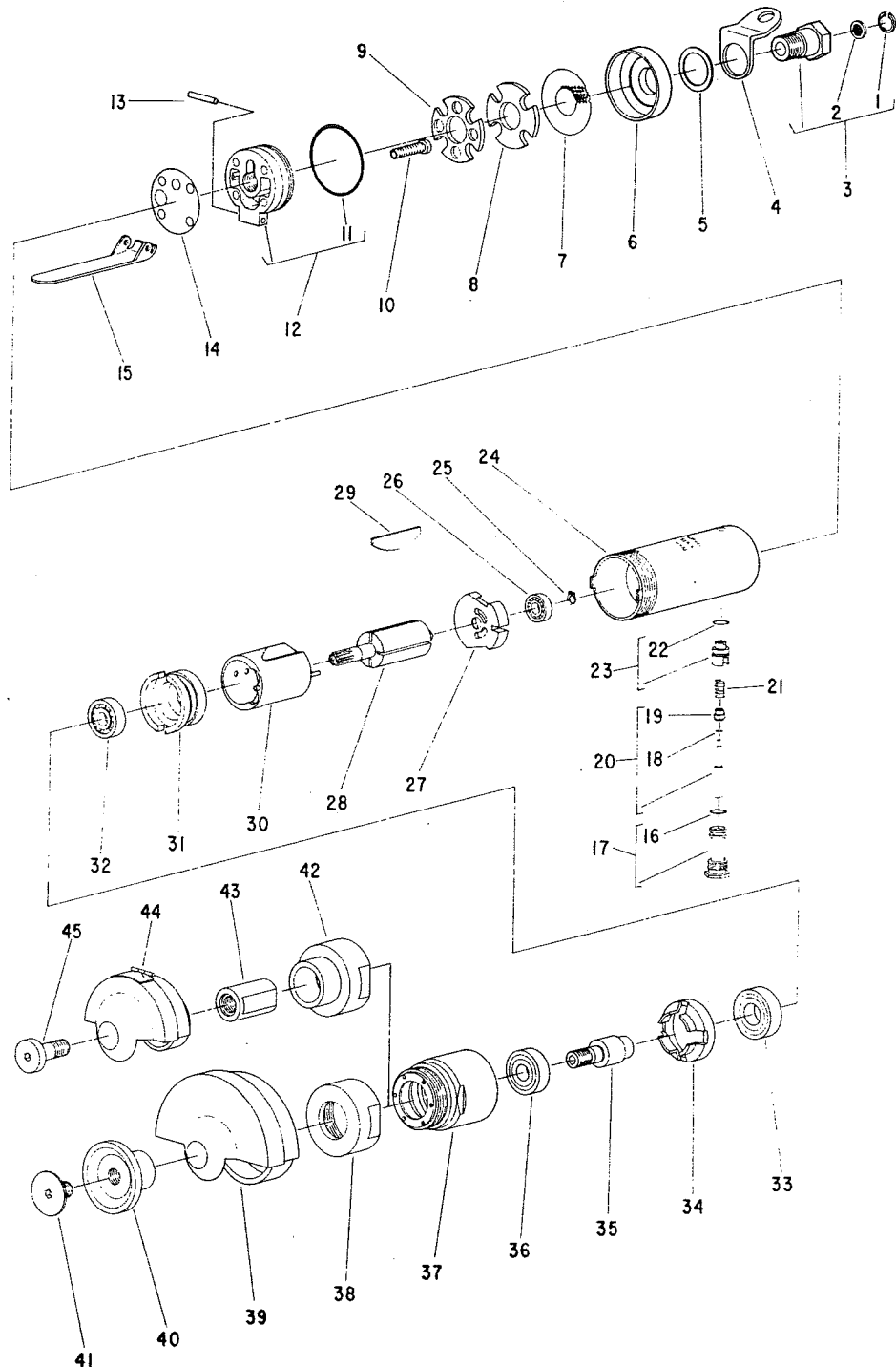


TOOLS

Parts List for No. L1960, L1970

HIGH SPEED AIR GRINDER

Ser. No's. Starting With "J"



Furnish Catalog and Serial Number When Ordering Parts

This pdf incorporates the following model numbers:

L1960, L1970