



NOTE: Parts are no longer available for this tool.

The manual will continue on the next page.

Parts List For Sioux No. 2079 BENCH GRINDER

Motor Ref. No's. 41367 & 41675G

Furnish Catalog and Motor Ref. Number When Ordering Parts

| Fig- ure | Part No. | Name | Fig- ure | Part No. | Name |
|-------------|-------------|---------------------------------------|-------------|-------------|---------------------------------------|
| 1. | | Field (Not Available) | 21. | | Screw—Rd.Hd. (#10-32 x 3/4") (12) |
| 2. | | Armature (Not Available) | †† 22. | | Rest—Tool (2)* |
| 3. | 12632 | End Shield (2)* | †† 23. | | Support—Tool Rest (2)* |
| 4. | 10141 | Bearing (2)* | 24. | | Bolt—Carriage (1/4"-20 x 2") (2) |
| 5. | 12615 | Base | 25. | | Nut—Hex (1/4"-20) (2) |
| 6. | 18210 | Switch (On-Off) | 26. | | Screw—Fil. Hd. (1/4"-20 x 5/8") (6) |
| 7. | 35388 | Clip—Capacitor | 27. | 18505 | Cord |
| 8. | 18893 | Capacitor—130 MFG (Motor Ref. 41367) | 28. | | Nut—Lock (#10-32) (4) |
| | 28108 | Capacitor—140 MFD (Motor Ref. 41675G) | 29. | 12631 | Cover—Wheel Guard (2)* |
| 9. | 2036 | Wheel—Grinding (Fine) | 30. | 07199 | Bolt—Thru (#10-32 x 9") (4)* |
| 10. | 2037 | Wheel—Grinding (Medium) | 31. | 21612 | Fan |
| 12. | 12629 | Guard—Wheel (R.H.) | 32. | 35338 | Cover—Base |
| 12.A | 12630 | Guard—Wheel (L.H.) | 33. | 35255 | Guard—Spark (2)* |
| 13. | 12635 | Flange—Inner (2)* | 34. | | Bolt—Carriage (5/16"-18 x 1-1/8") (2) |
| 14. | 12636 | Flange—Outer (2)* | 35. | | Nut—Hex (5/16"-18) (2) |
| 15. | 09650 | Nut—Hex (5/8"-18, R.H.) | †† 36. | | Spacer (2)* |
| 16. | 09651 | Nut—Hex (5/8"-18, L.H.) | 37. | 2016 | Shield—Eye (Set of 2) |
| 17. | 41300 | Spring—Finger (2)* | 38. | 2016A | Glass—Safety Plate (2)* |
| †18. | 18797 | Switch—Rotating (Motor Ref. 41367) | †39. | 28118 | Relay (Motor Ref. 41675G) |
| †19. | 18796 | Switch—Stationary (Motor Ref. 41367) | 2064 | | Assy.—Flexible Light |
| 20. | 04258 | Bumper—Rubber (4)* | | | |

*Order Quantity As Needed

†When Items #18 & 19 Are Used, Omit Item #39

†When Item #39 Is Used, Omit Items #18 & 19

†† NOT AVAILABLE INDIVIDUALLY ORDER ASSY, PT. NO. 63071

SIOUX TOOLS INC.

2901 FLOYD BOULEVARD ■ SIOUX CITY, IOWA 51102 ■



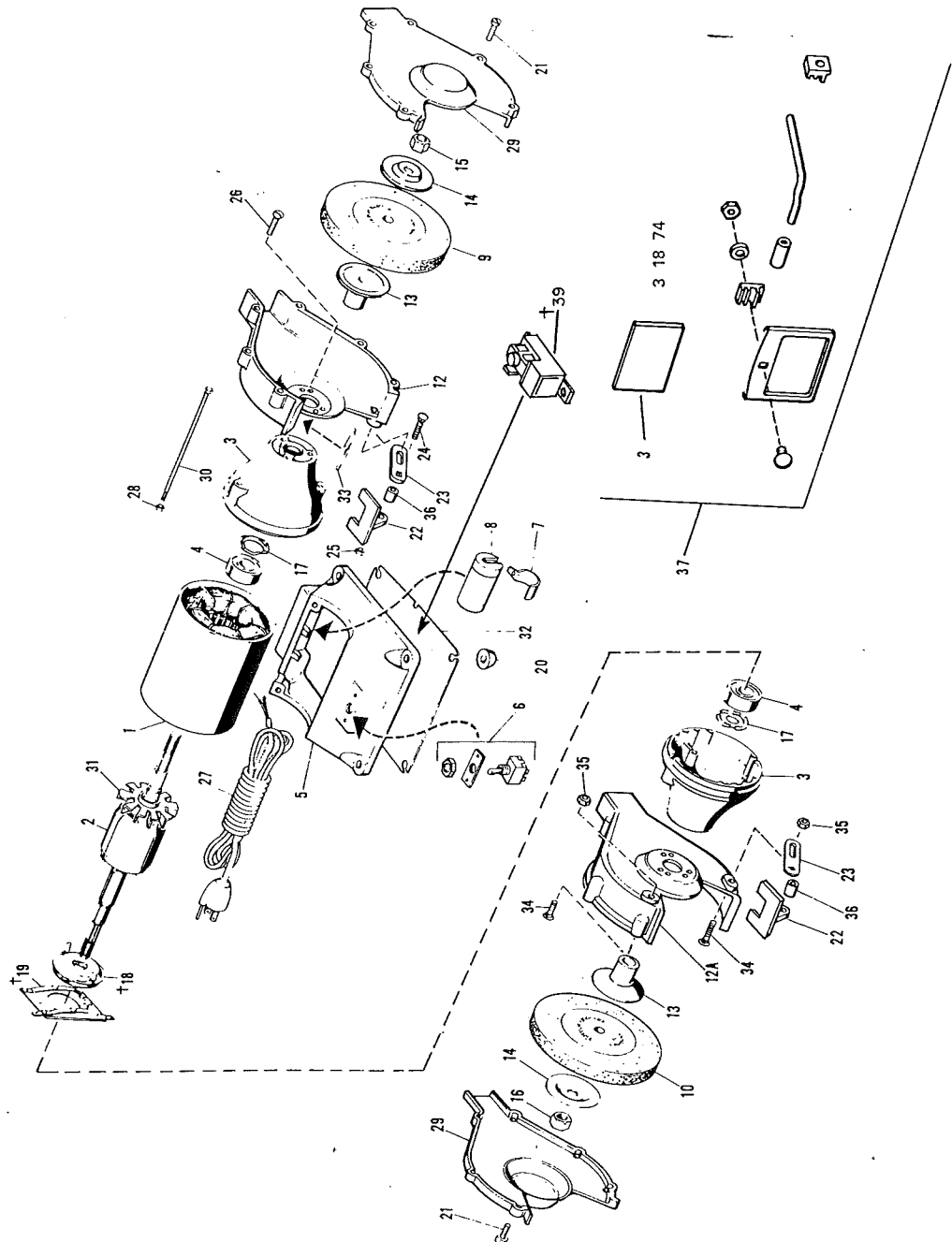
**SIoux
TOOLS INC.**

2901 FLOYD BOULEVARD ■ SIOUX CITY, IOWA 51102 ■

Form A410
Dated 11/79

Parts List for No. 2079 BENCH GRINDER

Motor Ref. No's. 41367 & 41675G



†Note: Grinder Has Either Items 18-19 or Item 39

Furnish Catalog and Motor Ref. Number When Ordering Parts

This pdf incorporates the following model numbers:

2079, 41367, 41675G