



NOTE: Parts are no longer available for this tool.

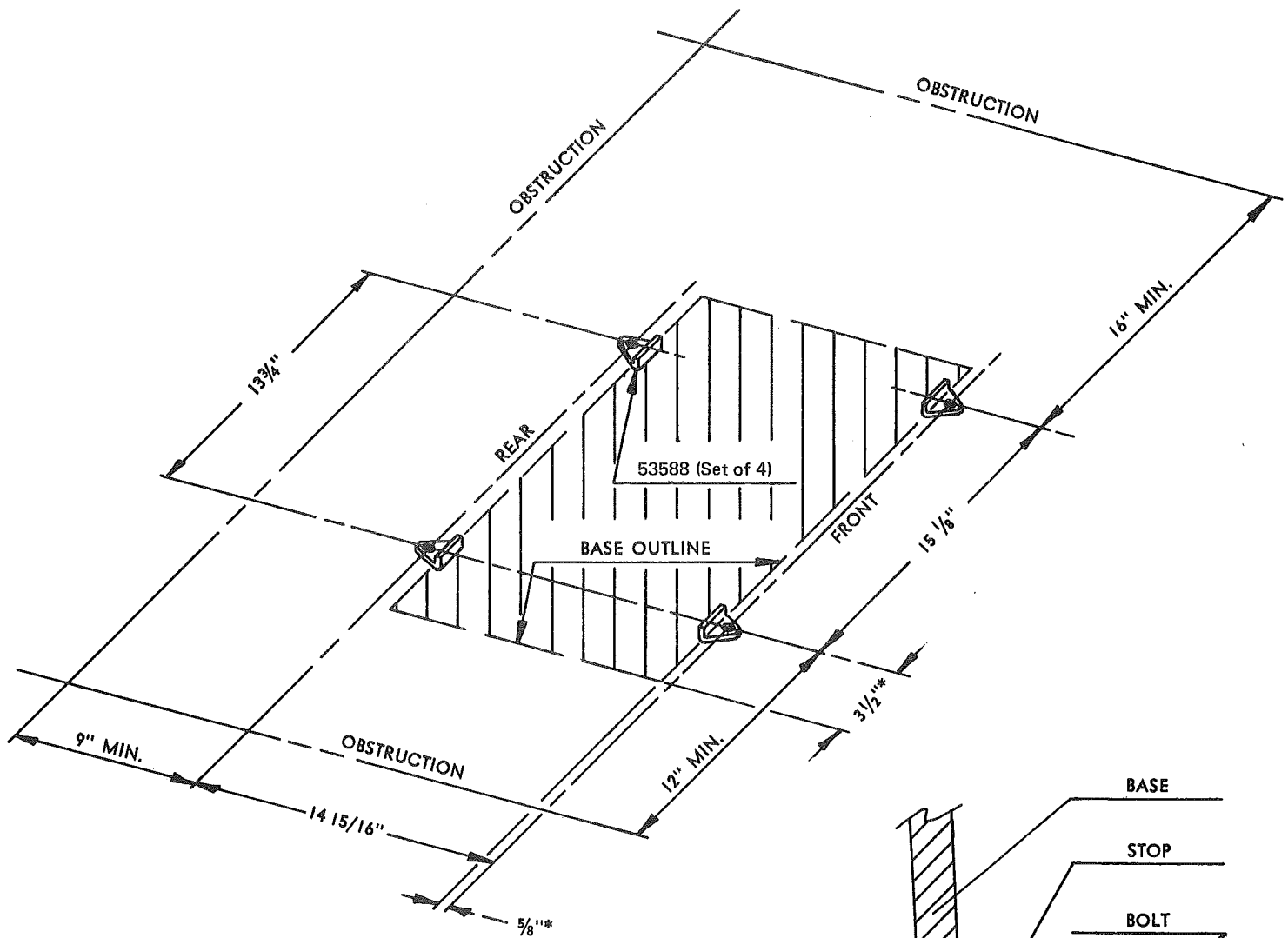
The manual will continue on the next page.



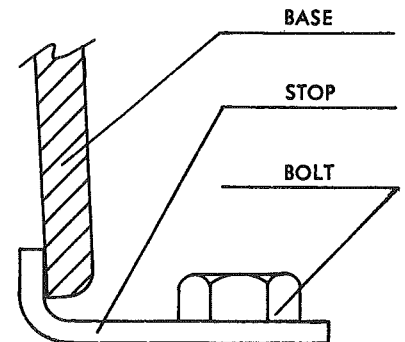
INSTRUCTIONS



Location Diagram for Base Stops For 680, 684 and 689 Valve Grinding Machines



*Base To Bolt Center Location



Slide Outward Until
Stop Strikes Base

Locate position for 3/8" Dia. Hold Down Bolts (not provided) as shown above. Make certain that minimum clearances are observed. Locate base so that the bolts will start 3 1/2" to the right from the left side of the base and the front of the base will be 5/8" behind the front bolts. Place vertical flanges of the stops inside of the base casting. Pull the stops out until they strike the base and bolt into place.

SIoux TOOLS Inc.
SIoux CITY, IOWA, U.S.A. 51102

This pdf incorporates the following model numbers:

680, 684, 689