



**NOTE: Parts are no longer available for this tool.**

**The manual will continue on the next page.**

# SIoux



# TOOLS

## No. 1445 1/4" Air Drill

## No. 1446 Air Shear

## No. 1447 Screwdriver

## No. 1448 3/8" Air Drill

Type 1 SERIAL 100 UP To "B"

Furnish Catalog and Serial Number When Ordering Parts

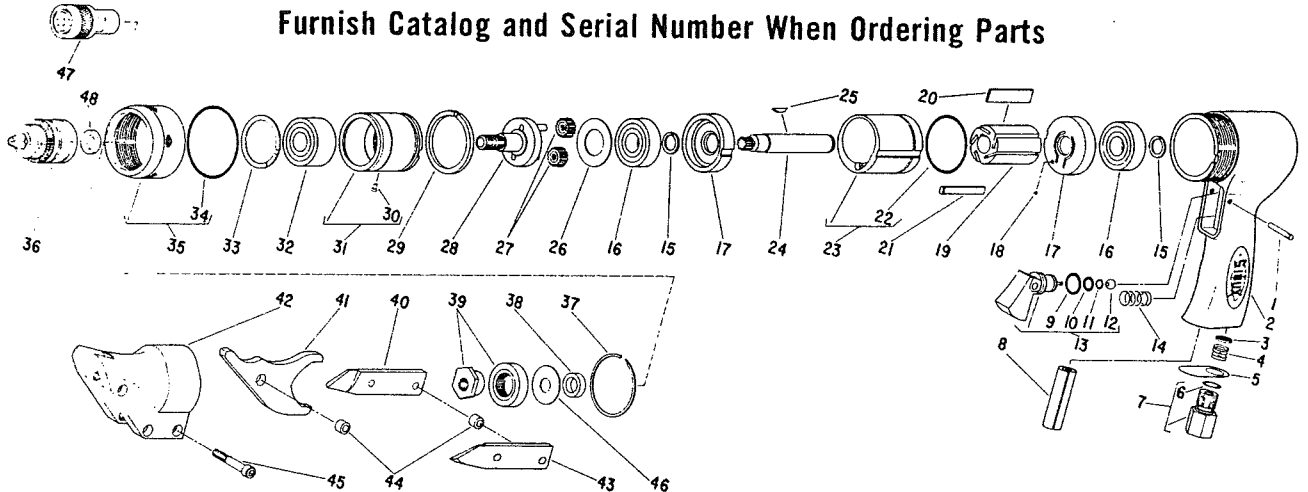


Figure	Part No.	Name
1	30322	Pin—Groove
2	12382	Housing
3	30463	Screen
4	41220	Spring
5	30717	Screen—Exhaust
6	14290	Ring—"O"
7	53489	Assy.—Adapter
8	14123	Pad—Silencer
9	14312	Ring—"O"
10	14311	Ring—"O"
11	14323	Ring—"O" (on earlier tools only)
12	04241	Ball
13	53464	Assy.—Trigger
14	41295	Spring
15	21781	Ring—Retaining (2)*
16	10196	Bearing—Ball (2) *
17	10536	Plate—End (2) *
18	10298	Ball
19	10534	Rotor
20	53490	Assy.—Vane (Set of 5)
21	35336	Key
22	14313	Ring—"O"
23	53492	Cylinder
24	54373	Shaft
25	40092	Key—Woodruff
26	25469	Spacer
27	53468	Assy.—Idler Gear (2)*
28	54374	Spindle
29	21782	Ring—Retaining

Figure	Part No.	Name
30	30375	Fitting—Grease
31	53488	Assy.—Ring Gear
32	10276	Bearing—Ball
33	21783	Ring—Retaining
34	04206	Ring—"O"
35	53529	Assy.—Lock Ring (1445)
	53757	Assy.—Lock Ring (1446)
	53758	Assy.—Lock Ring (1447)
	53759	Assy.—Lock Ring (1448)
36	21121	Chuck 1/4" (1445)
	30722	Key—Chuck (1445) (Not Shown)
	21129	Chuck 3/8" (1448)
	30262	Key—Chuck (1448) (Not Shown)
37	21788	Ring—Retaining (1446)
38	54497	Spacer (1446)
39	53614	Assy.—Eccentric (1446)
40	54501	Knife—Side (Right) (1446)
41	54499	Blade—Center (1446)
42	12598	Housing—Shear (1446)
43	54500	Knife—Side (Left) (1446)
44	54502	Bushing—Spacer (2)* (1446)
45	07102	Screw—Socket Hd. Cap (3)* (1446)
46	35308	Washer (1446)
47	2352	1/4" Hex. Adapter (1447)
48	44122	Spacer—Chuck (1448)
	30096	Wrench—Allen (1446) (Not Shown)
		Complete Assy.
	53465	Assy.—Housing (Incl. Figs. 1-14)
	53609	Assy.—Shear Head (Incl. Figs. 39-45) (1446)

\*Order Quantity Needed.

# SIoux TOOLS INC.



This pdf incorporates the following model numbers:

1445, 1446, 1447, 1448