



NOTE: Parts are no longer available for this tool.

The manual will continue on the next page.

SIoux



TOOLS

Parts List for No's.

4007, 4008, 4016, 4017

AIR IMPACT WRENCHES and NO. 4001 SCREW DRIVER

(Serial No's. Up To "B")

Furnish Catalog, Serial and Model Number When Ordering Parts

Fig- ure	Part No.	Name	Fig- ure	Part No.	Name
1	06603	Screw (4)	34	53246	Ass'y.—Plunger Valve
2	09712	Washer (8)	35	53245	Ass'y.—Adjustable Throttle Valve
3	30356	Fitting—Grease	36	14313	Ring—"O"
5	30498	Seal	37	10203	Bearing—Ball
6	53215	Ass'y.—Back Cap	38	35289	Washer
7	14798	Gasket	39	54225	Sleeve—Guide (2)
8	10219	Bearing—Ball	40	54219	Frame—Hammer
9	43532	Ass'y.—Rear End Plate	41	54224	Cam
10	44846	Rotor	42	54226	Thrust Disc
11	33940	Vane—Rotor (Set of 6)	43	10306	Ball
12	44737	Cylinder	44	54231	Hammer
13	30424	Pin—Alignment	45	33465	Ass'y.—Socket Retainer (4007, 4008)
14	14334	Ring—"O"		43890	Ass'y.—Socket Retainer (4016, 4017)
15	53214	Ass'y.—Front End Plate	46	53251	Ass'y.—Anvil (4016)
16	10221	Bearing—Ball		53252	Ass'y.—Anvil Sp. 2" Ext. (4017)
17	11581	Valve—Reversing		53253	Ass'y.—Anvil (4007)
18	30322	Pin		53254	Ass'y.—Anvil Sp. 2" Ext. (4008)
19	44106	Insert (4)	47	10024	Bearing—Thrust
20	14369	Ring—"O"	48	10029	Race
21	43553	Ass'y.—Oiler Screw	49	10054	Bearing—Needle
22	33993	Ass'y.—Air Screen	50	30669	Seal—Oil
23	21417	Spring	51	53216	Ass'y.—Hammer Case
24	44100	Bushing—Reducing	52	35041	Bail—Front
25	43543	Ass'y.—Deflecting Silencer	53	06501	Screw (4)
26	53092	Ass'y.—Housing	54	21501	Ring—Retainer (4001)
27	53182	Ass'y.—Adjustable Trigger	55	44660	Ring—Guide (4001)
28	21542	Ring—Retainer	56	21406	Spring (4001)
29	21401	Spring	57	44161	Retainer—Ball (4001)
30	44754	Bushing	58	10902	Ball (4001)
31	14312	Ring—"O" (2)	59	54238	Anvil (4001)
32	53258	Ass'y.—Valve Body & "O" Ring			
33	14325	Valve			

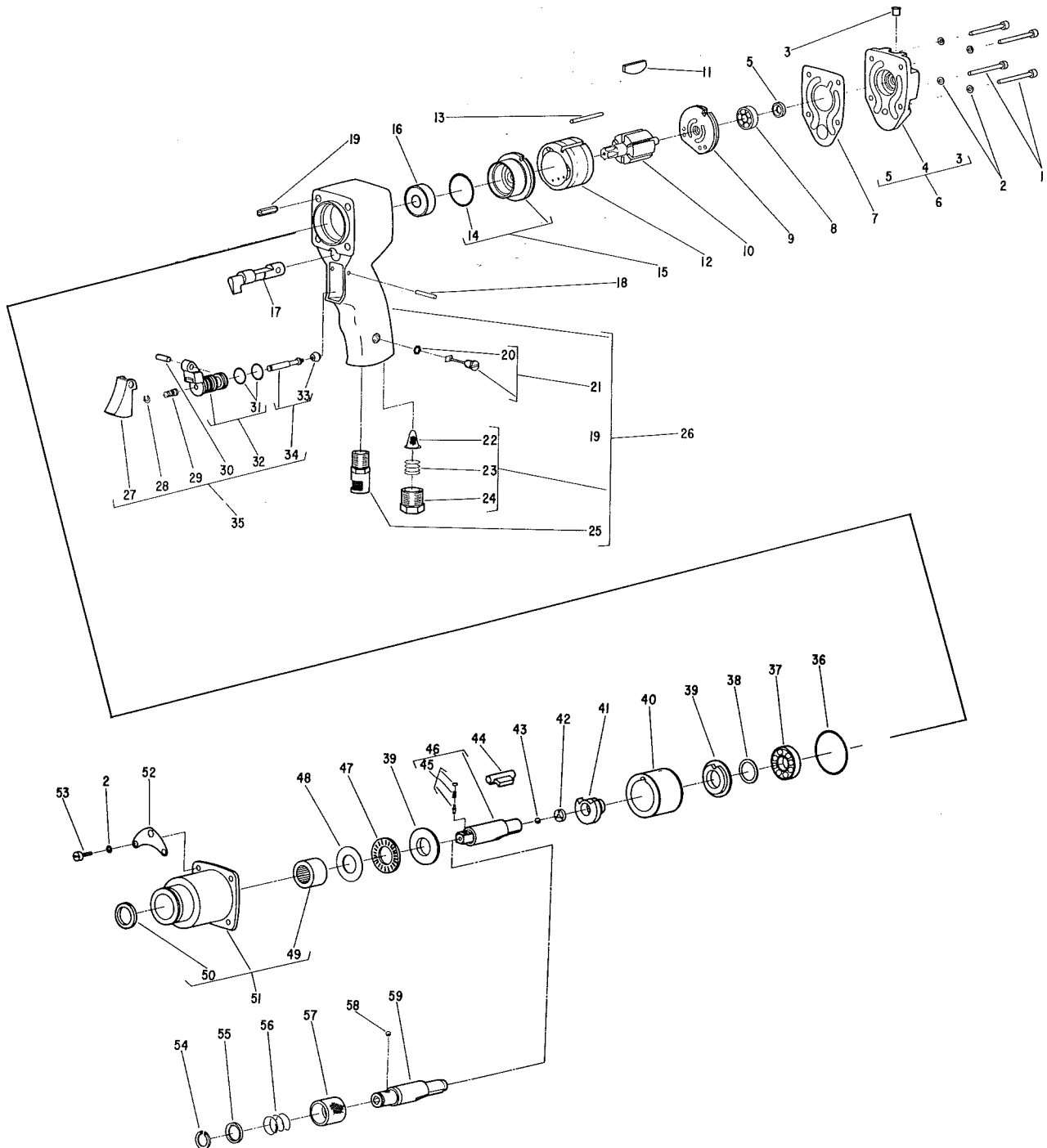
SIoux TOOLS INC.
SIoux CITY, IOWA, U.S.A. 51102

SIoux



TOOLS

**Parts List for No's.
4007, 4008, 4016, 4017
AIR IMPACT WRENCHES and NO. 4001 SCREW DRIVER
(Serial No's. Up To "B")**



Furnish Catalog, Serial and Model Number When Ordering Parts

This pdf incorporates the following model numbers:

4007, 4008, 4016, 4017, 4001