



NOTE: Parts are no longer available for this tool.

The manual will continue on the next page.

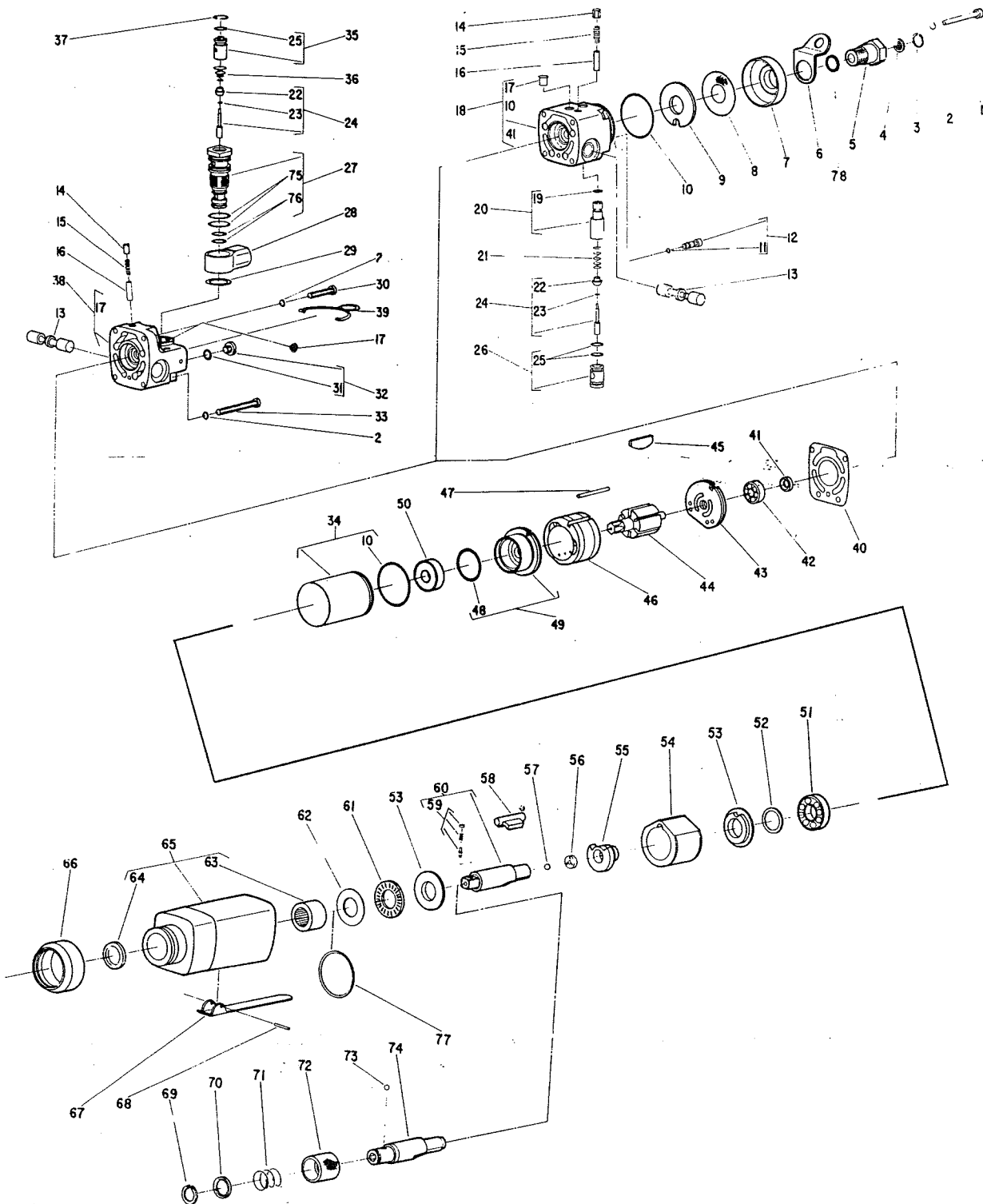
Parts List for No's. 4009A, 4010A, 4011A, 4012A, 4018A, 4019A, 4020A, 4021A



AIR IMPACT WRENCHES and No. 4002A and 4003A SCREW DRIVERS

(4003A, 4011A, 4012A, 4020A, 4021A Serial No's. Starting With "B")

(4002A, 4009A, 4010A, 4018A, 4019A Serial No's. Starting With "C")



Furnish Catalog, Serial and Model Number When Ordering Parts

Parts List for No's.

4009A, 4010A, 4011A, 4012A, 4018A, 4019A, 4020A, 4021A

AIR IMPACT WRENCHES and

No. 4002A and 4003A SCREW DRIVERS

(4003A, 4011A, 4012A, 4020A, 4021A Serial No's. Starting With "B")

(4002A, 4009A, 4010A, 4018A, 4019A Serial No's. Starting With "C")

Fig- ure	Parts No	Name
1.	06603	Screw (4)
2.	09712	Lockwasher (4)
3.	21541	Retainer
4.	30463	Screen
5.	53942	Adaptor—Intake (Incl. Fig. 3,4, & 78)
6.	35192	Bail
7.	44692	Defector—Air
8.	30470	Screen
9.	14779	Gasket
10.	14313	Ring—"O" (2)
11.	14349	Ring—"O"
12.	43518	Assy.—Valve Seat Retainer & "O" Ring
13.	44684	Valve—Reversing
14.	08001	Screw
15.	41213	Spring
16.	44682	Plunger—Reversing Valve
17.	30356	Fitting—Grease
18.	53947	Assy.—Back Cap (Incl. Fig. 5 & 10)
19.	14308	Ring—"O"
20.	43578	Assy.—Output Control & "O" Ring
21.	21372	Spring
22.	14325	Valve
23.	25957	Washer
24.	43515	Assy.—Valve
25.	14311	Ring—"O" (2)
26.	43516	Assy.—Throttle Valve Seat & "O" Ring
27.	43547	Assy.—Valve Seat & "O" Rings
28.	13221	Swivel—Hose
29.	35030	Washer
30.	06605	Screw (2)
31.	14291	Ring—"O"
32.	53300	Assy.—Locking Screw & "O" Ring
33.	06603	Screw (2)
34.	43514	Assy.—Motor Location Sleeve & "O" Ring
35.	43548	Assy.—Output Control & "O" Ring
36.	41214	Spring
37.	21541	Ring—Retainer
38.	43536	Assy.—Back Cap
39.	21374	Bail
40.	14777	Gasket
41.	30498	Seal
42.	10219	Bearing—Ball
43.	43532	Assy.—Rear End Plate

Fig- ure	Part No.	Name
44.	44846	Rotor
45.	33940	Vane—Rotor (Set of 6)
46.	44737	Cylinder
47.	30424	Pin Alignment
48.	14334	Ring—"O"
49.	53214	Assy.—Front End Plate
50.	10221	Bearing—Ball
51.	10203	Bearing—Ball
52.	35289	Washer
53.	54425	Sleeve—Guide (2)
54.	54426	Frame—Hammer
55.	54224	Cam
56.	54226	Thrust Disc
57.	10306	Ball
58.	54429	Hammer
59.	33465	Assy.—Socket Retainer (4009A, 4010A, 4011A, 4012A)
	43890	Assy.—Socket Retainer (4018A, 4019A, 4020A, 4021A)
60.	53514	Assy.—Anvil (4020A) (4018A)
	53513	Assy.—Anvil (4021A) (4019A)
	53516	Assy.—Anvil (4011A) (4009A)
	53515	Assy.—Anvil (4012A) (4010A)
61.	10024	Bearing—Thrust
62.	10029	Race
63.	10054	Bearing—Needle
64.	30669	Seal—Oil
65.	53217	Assy.—Hammer Case
66.	14351	Protector Rubber (4009A, 4010A, 4011A, 4012A, 4018A, 4019A, 4020A, 4021A)
	14351	Protector Rubber (4002A, 4003A)
67.	35191	Lever
68.	30632	Pin—Roll
69.	21501	Ring—Retainer (4002A, 4003A)
70.	44660	Ring—Guide (4002A, 4003A)
71.	21406	Spring (4002A, 4003A)
72.	44161	Retainer—Ball (4002A, 4003A)
73.	10902	Ball (4002A, 4003A)
74.	54430	Anvil (4002A, 4003A)
75.	14281	Ring—"O" (2)
76.	14290	Ring—"O" (2)
77.	35189	Washer—Motor Sleeve
78.	14312	Ring—"O"

Furnish Catalog, Serial and Model Number When Ordering Parts

This pdf incorporates the following model numbers:

4009A, 40410A, 4011A, 4012A, 4018A, 4019A, 4020A, 4021A, 4002A, 4003A