

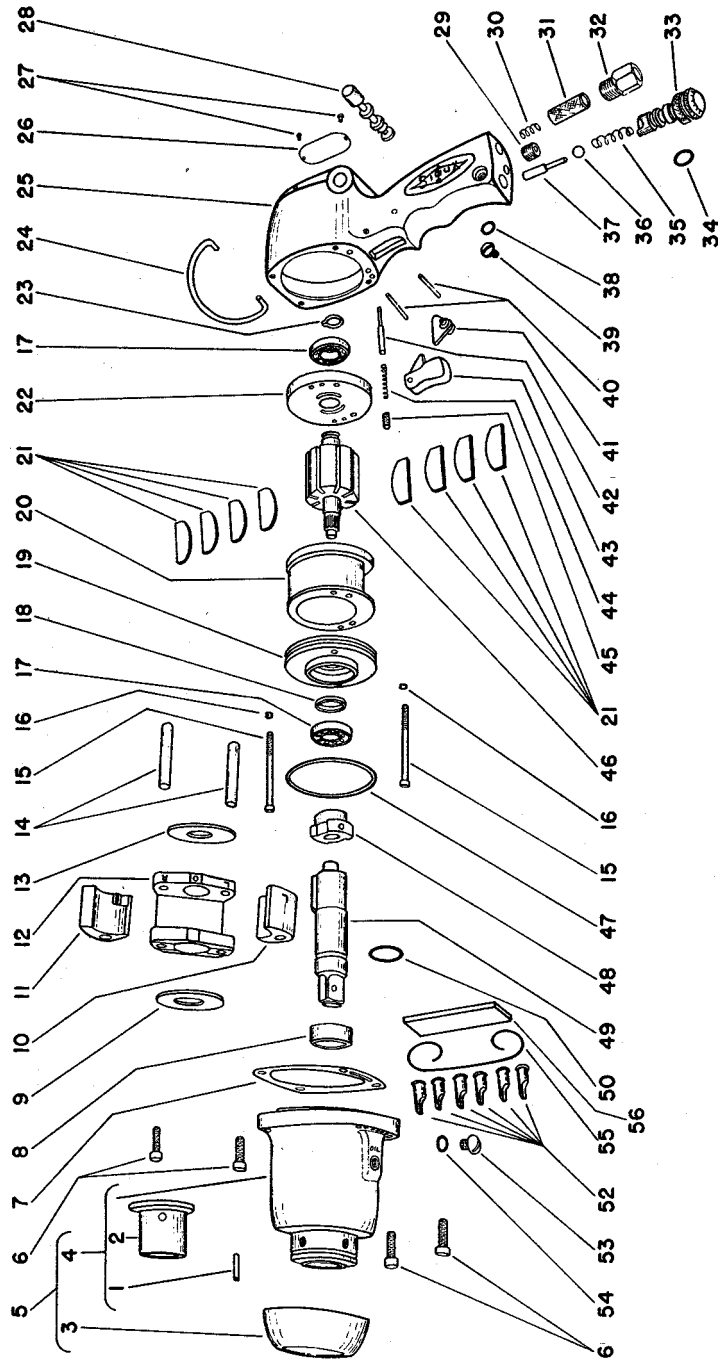


**NOTE: Parts are no longer available for this tool.**

**The manual will continue on the next page.**



## Parts List for No's. 320 & 322 AIR IMPACT WRENCH



**SIoux  
TOOLS INC.**

250 SNAP-ON DRIVE ■ PO BOX 1596 ■ MURPHY, NC 28906 ■ USA ■

Printed In U.S.A.



## Parts List for No's. 320 & 322

### AIR IMPACT WRENCH

Furnish Catalog, Serial and Model Number When Ordering Parts

Fig- ure	Part No.	Name	Fig- ure	Part No.	Name
1	30229	Pin (3)	25	33610	Ass'm.—Housing (320)
2	10402	Bushing—Steel (320)		33611	Ass'm.—Housing (322)
	10407	Bushing—Steel (322)	26	20244	Plate—Name (Up to Serial 1050)
3	14305	Protector—Rubber (320)		(320)	
	14305G	Protector—Rubber (322)		20248	Plate—Name (Serial 1051 & up)
4	33364	Ass'm.—Hammer Case (320)		(320)	
	33454	Ass'm.—Hammer Case (322)		20259	Plate—Name (322)
5	33298	Ass'm.—Hammer Case with Protector (320)	27	09954	Screw—Drive (2)
	33451	Ass'm.—Hammer Case with Protector (322)	28	34608	Valve—Reversing
6	08014	Screw 1/4" (4)	29	30246	Plug
	09748	Washer—Lock 1/4" (4)	30	21305	Spring—Air Screen
* 7	14722	Gasket	31	30248	Screen—Air
8	34607	Sleeve—Guide (320—up to Serial 2500)	32	30276	Connection—Air Hose
	34830	Sleeve—Guide (320—Serial 2501 & up)	33	13120	Regulator—Air
	34685	Sleeve—Guide (322—up to Serial 1500)	* 34	14290	Ring—"O"
	34823	Sleeve—Guide (322—Serial 1501 & up)	35	21346	Spring—Throttle Valve
9	25923	Retainer—Pin (320—up to Serial 2500)	36	10323	Ball—Throttle Valve
	25941	Retainer—Pin (322—up to Serial 1500)	37	34669	Plunger—Throttle Valve
10	34603	Hammer—Left Hand Drive (320—up to Serial 2500) (322—up to Serial 1500)	* 38	14308	Ring—"O"
	34828	Hammer—Left Hand Drive (320—Serial 2501 & up) (322—Serial 1501 & up)	39	07219	Screw—Retainer
11	34602	Hammer—Right Hand Drive (320—up to Serial 2500) (322—up to Serial 1500)	40	30251	Pin—Groove (2)
	34827	Hammer—Right Hand Drive (320—Serial 2501 & up) (322—Serial 1501 & up)	41	33176	Ass'm.—Lever
12	34604	Frame—Hammer (320—up to Serial 2500) (322—up to Serial 1500)	42	34612	Plunger—Reversing Valve Stop (320—up to Serial 2200) (322—up to Serial 5000)
	34821	Frame—Hammer (320—Serial 2501 & up) (322—Serial 1501 & up)	34934	Plunger—Reversing Valve Stop (320—Serial 2201 & up) (322—Serial 5001 & up)	
13	25922	Retainer—Pin	10299	Ball—Steel (320—Serial 2201 & up) (322—Serial 5001 & up)	
14	34609	Pin—Hammer (2) (320—up to Serial 2500) (322—up to Serial 1500)	43	33146	Ass'm.—Trigger
	34822	Pin—Hammer (2) 320—Serial 2501 & up) (322—Serial 1501 & up)	44	21315	Spring
15	07138	Screw #10 (2)	45	08583	Screw 5/16"
* 16	14613	Washer—Fibre (2)	46	34610	Rotor
✓ 17	10217	Bearing—Housing	* 47	14304	Ring—"O"
	10227	Bearing—Front End Plate	48	34606	Cam—Drive (320—up to Serial 2500) (322—up to Serial 1500)
* 18	14338	Ring—Quad	34829	Cam—Drive (320—Serial 2501 & up) (322—Serial 1501 & up)	
✓ 19	33300	Plate—Front End	49	33299	Ass'm.—Anvil (320)
20	34613	Cylinder (320)	33405	Ass'm.—Sp. 3" Longer Anvil (320)	
	34686	Cylinder (322)	33490	Ass'm.—Sp. 6" Longer Anvil (320)	
* 21	33302	Vane—Rotor (Set of 8)	33452	Ass'm.—Anvil (322)	
✓ 22	33301	Plate—Rear End (320)	33406	Ass'm.—Sp. 3" Longer Anvil (322)	
	33453	Plate—Rear End (322)	33485	Ass'm.—Sp. 6" Longer Anvil (322)	
23	21490	Ring—Retainer	* 50	14303	Ring—"O" (320)
24	21367	Bail	*	14317	Ring—"O" (322)
			52	14025	Deflector—Air (6)
			53	08040	Screw 1/4"
			* 54	14291	Ring—"O"
				30206	Wrench—Allen 3/16"
				1381	Hose—Leader
			55	41270	Spring—Retainer
			56	14112	Liner—Air Deflector

\*These parts included in Tune-Up Set No. 43902

# SIoux TOOLS INC.

250 SNAP-ON DRIVE ■ PO BOX 1596 ■ MURPHY, NC 28906 ■ USA ■

Printed In U.S.A.

This pdf incorporates the following model numbers:

320, 322