



NOTE: Parts are no longer available for this tool.

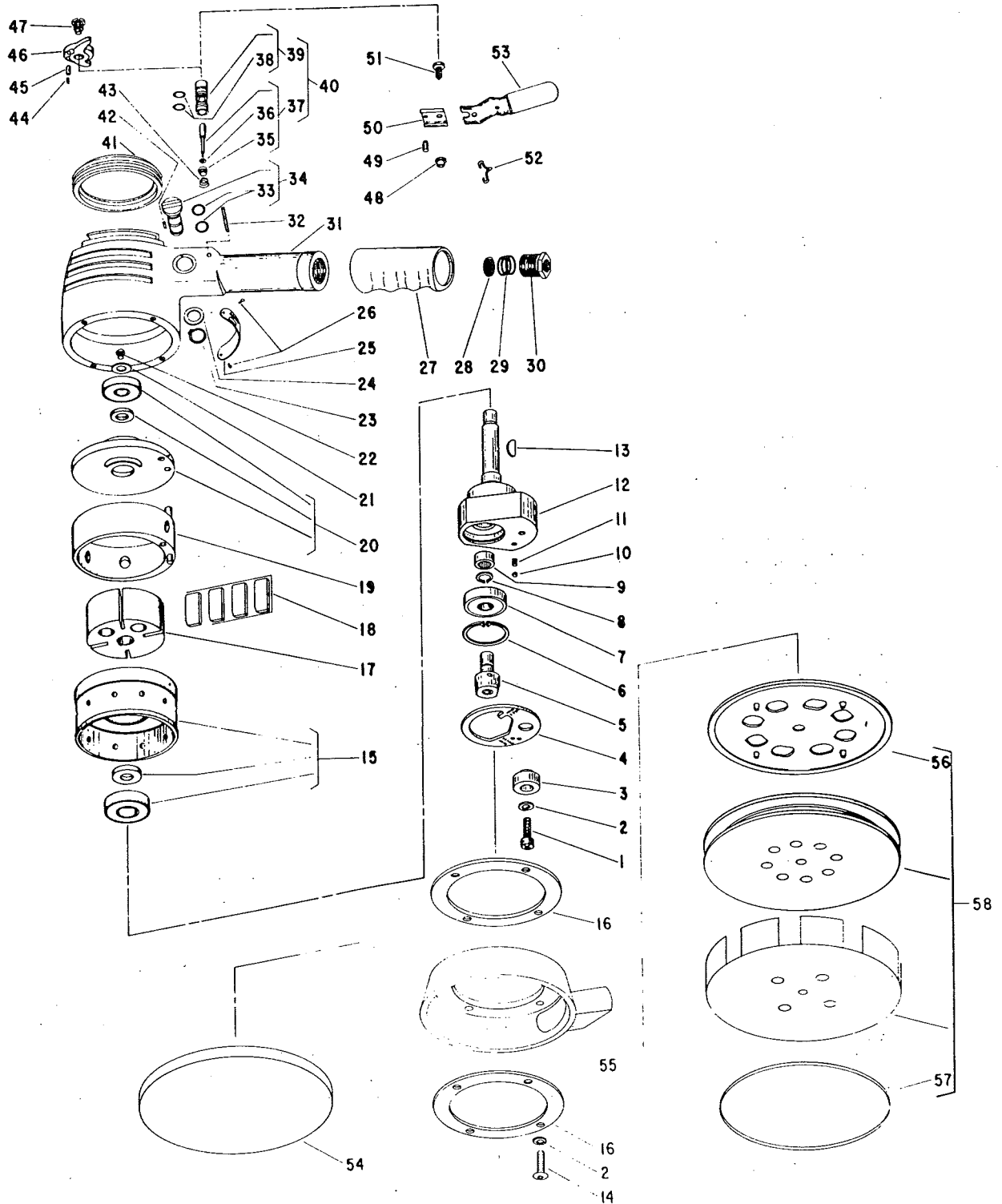
The manual will continue on the next page.



503, 503V, 558, 558V Air Orbital Disc Sander (Dual Action)

(Ser. No's. Starting With "B")

Form A251B
Dated 8/81
E.D. 9/81



Furnish Catalog and Serial Number When Ordering Parts

503, 503V, 558, 558V Air Orbital Disc Sander (Dual Action)

(Ser. No's. Starting With "B")

Furnish Catalog and Serial Number When Ordering Parts

Fig- ure	Part No.	Name	Fig- ure	Part No.	Name
1.	07111	Screw — Phil. Fil. Hd. #10-24 x 5/8"	30.	44100	Bushing — Reducing
2.	09724	Washer — Lock #10 (5)*	31.	43617	Assy. — Handle (Incl. Figs. 27 & 42)
3.	54592	Knob	32.	30336	Pin — Roll 3/32" x 5/8" (503, 503V)
4.	35382	Ring — Lock		30349	Pin — Roll 3/32" x 13/16" (558, 558V)
5.	54594	Spindle — Pad	33.	14389	Ring — "0" //16" x 1/2" (2)*
6.	21513	Ring — Retaining	34.	43618	Assy. — Speed Control & 9 "0" Ring
7.	10228	Bearing — Ball	35.	14350	Valve — Rubber
8.	21751	Ring — Retaining	36.	25957	Washer
9.	10045	Bearing — Needle Roller	37.	43539	Assy. — Throttle Valve
10.	10303	Ball — Steel 1/8" Dia.	38.	14291	Ring — "0" 1/16" x 1/4" x 3/8" (2)*
11.	21223	Spring	39.	43667	Assy. — Valve Seat & "0" Ring
12.	54593	Spindle — Rotor	40.	43638	Assy. — Valve
13.	40092	Key — Woodruff #2	41.	04203	Protector — Rubber
14.	07097	Screw — Button Hd. Hex. Soc. (503, 558) #10-24 1/2" (4)*	42.	30273	Pin — Roll 3/32" x 1/4"
	07089	Screw — Button Hd. Hex. Soc. (503V, 558V) #10-24 x 5/8" (4)*	43.	21401	Spring
15.	43720	Assy. — Lower End Plate. Brg. & Spacer	44.	21392	Spring (503, 503V)
16.	35190	Ring — Motor Retainer (503, 558) (1) (503V, 558V) (2)	45.	44753	Plunger — Location (503, 503V)
17.	44759	Rotor	46.	11559	Throttle — Thumb (503, 503V)
18.	43621	Vane — Rotor (Set of 4)	47.	44763	Screw — Shoulder (503, 503V)
19.	44749	Cylinder	48.	54132	Sleeve (558, 558V)
20.	43721	Assy. — Upper End Plate, Brg. & Spacer	49.	54130	Pin (558, 558V)
21.	25059	Washer	50.	35279	Cover (558, 558V)
22.	07096	Screw — Button Hd. Hex. Soc. #10-24 x 3/8"	51.	07225	Screw — Phil. Pan Hd. (558, 558V)
23.	21501	Ring — Retaining	52.	41254	Lock (558, 558V)
24.	25976	Washer	53.	35278	Lever (558, 558V)
25.	20390	Plate — Name (503, 503V)	54.	585	Pad — Backing (5") (503, 558)
	20404	Plate — Name (558, 558V)		583	Pad — Backing (6") (506, 560)
26.	09954	Screw — Drive (2)*	55.	40041	Shroud — 5" (503V, 558V)
27.	14078	Grip — Handle	56.	40054	Plate — Top (5") (503V, 558V)
28.	30462	Screen	57.	40045	Ring — Elastic (5") (503V, 558V)
29.	21417	Spring	58.	830	Assy. — Backing Pad (5") (503V, 558V)

*Order Quantity As Needed



SIOUX TOOLS INC.

2901 FLOYD BOULEVARD ■ SIOUX CITY, IOWA 51102 ■

PRINTED IN U.S.A.

This pdf incorporates the following model numbers:

503, 503V, 558, 558V