



**NOTE: Parts are no longer available for this tool.**

**The manual will continue on the next page.**

**SIoux****TOOLS**

## Parts List for No. 295 AIR SCREW DRIVER

Furnish Catalog and Serial Number When Ordering Parts

Fig- ure	Part No.	Name	Fig- ure	Part No.	Name
1	14351B	Protector—Rubber	33	35311	Washer
2	21406	Spring	34	43515	Ass'm.—Valve
3	10902	Ball—Steel	* 35	14281	Ring—"O" (2)
* 4	30258	Seal—Oil	* 36	14290	Ring—"O" (2)
5	10424	Bushing	37	43547	Valve Seat & "O" Ring
6	30471	Pin—Roll	38	09712	Washer—Lock #8 (4)
7	43482	Ass'm.—Hammer Case	39	06605	Screw—#8 (2)
8	35189	Washer	40	30356	Fitting—Grease
9	44742	Anvil	41	43536	Ass'm.—Back Cap
10	11558	Hammer—Auxiliary	42	06603	Screw—#8 (2)
11	10291	Ball—Steel	43	44747	Screw—Locking
12	10306	Ball—Steel	* 44	14291	Ring—"O"
13	10203	Bearing—Ball	45	44684	Valve—Reversing
14	43514	Ass'm.—Motor Location Sleeve & "O" Ring	* 46	30498	Seal
* 15	14313	Ring—"O"	47	10219	Bearing—Ball
16	43533	Ass'm.—Front End Plate	48	30424	Pin
* 17	30473	Seal—Garlock	49	44693	Rotor
* 18	14334	Ring—"O"	50	35186	Spacer
* 19	33940	Vane—Rotor (Set of 6)	51	10241	Bearing—Ball
20	44737	Cylinder	52	44736	Frame—Hammer
21	43532	Plate—Rear End	53	44673	Bearing—Spindle Cam
* 22	14777	Gasket—Back Cap	54	44309	Cam—Spindle
23	44682	Plunger—Reversing Valve	55	21404	Spring
24	41213	Spring	56	35094	Washer
25	08001	Screw—1/4"	57	35093	Washer—Split (Set of 2)
26	35030	Washer	58	35191	Lever
27	13221	Swivel—Hose	59	30632	Pin—Roll
28	41214	Spring—Valve	60	44161	Retainer—Ball
29	21541	Retainer—Ring	61	44660	Ring—Guide
* 30	14311	Ring—"O"	62	21501	Ring—Retainer
31	43548	Ass'm.—Output Control & "O" Ring	63	21447	Bail
* 32	14325	Valve			

\*These parts included in Tune-Up Set No. 43912

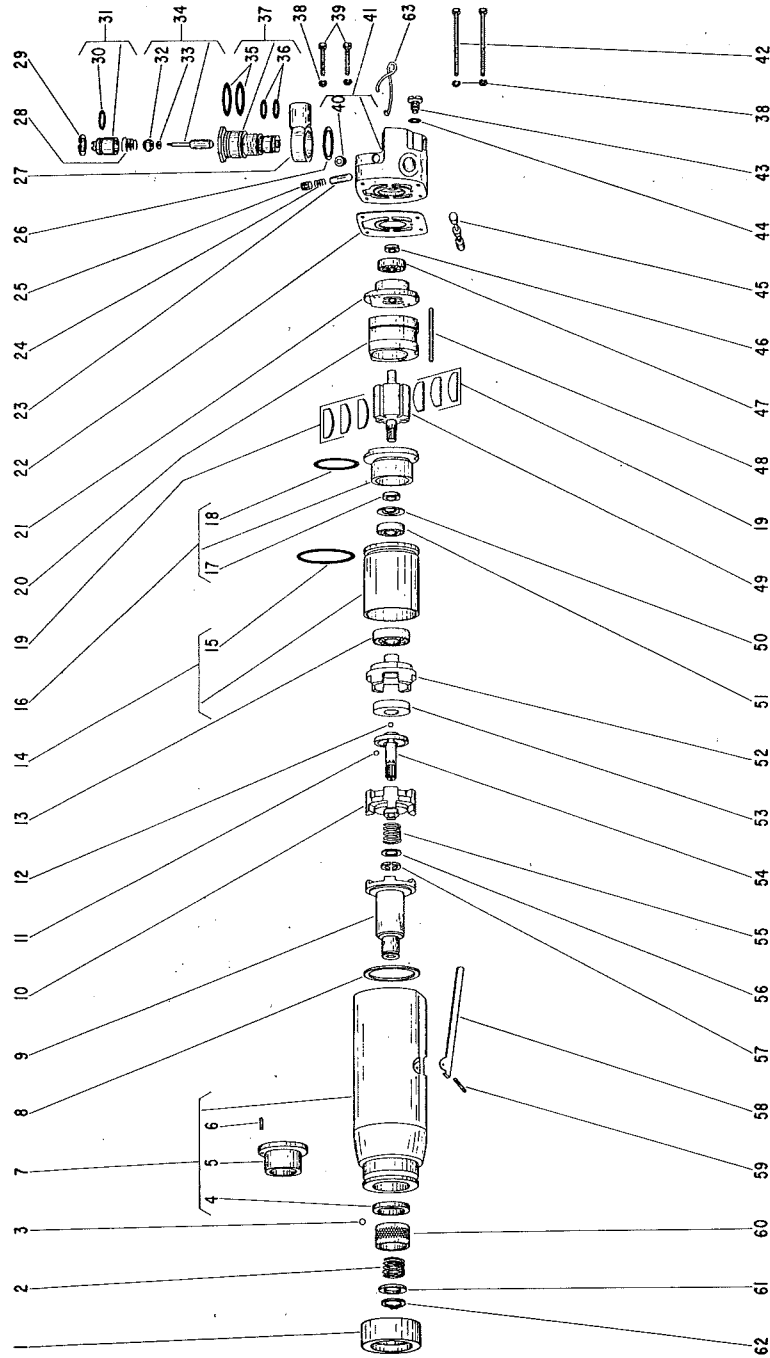
**SIoux TOOLS INC.**  
SIoux CITY, IOWA, U.S.A. 51102

# SIoux



# TOOLS

## Parts List for No. 295 AIR SCREW DRIVER



Furnish Catalog and Serial Number When Ordering Parts

This pdf incorporates the following model numbers:

295