



NOTE: Parts are no longer available for this tool.

The manual will continue on the next page.

SIoux**TOOLS**

Parts List for No's. 293 & 294 AIR IMPACT WRENCH

Furnish Catalog and Serial Number When Ordering Parts

Fig- ure	Part No.	Name	Fig- ure	Part No.	Name
1	43482	Ass'm.—Hammer Case	*31	14311	Ring—"O"
*2	30258	Seal—Oil	32	43548	Ass'm.—Output Control & "O" Ring
3	10424	Bushing	*33	14325	Valve
4	30471	Pin—Roll	34	35311	Washer
5	35189	Washer	35	43515	Ass'm.—Valve
6	43524	Ass'm.—Anvil (293)	*36	14281	Ring—"O" (2)
	43525	Ass'm.—Sp. 2" Longer Anvil (293)	*37	14290	Ring—"O" (2)
	43526	Ass'm.—Anvil (294)	38	43547	Ass'm.—Valve Seat & "O" Ring
	43527	Ass'm.—Sp. 2" Longer Anvil (294)	39	09712	Washer—Lock #8 (4)
7	33465	Ass'm.—Socket Retainer (293)	40	06605	Screw—#8 (2)
	43890	Ass'm.—Socket Retainer (294)	41	30356	Fitting—Grease
11	11558	Hammer—Auxiliary	42	43536	Ass'm.—Back Cap
12	10291	Ball—Steel	43	06603	Screw—#8 (2)
13	10306	Ball—Steel	44	44747	Screw—Locking
14	10203	Bearing—Ball	*45	14291	Ring—"O"
15	43514	Ass'm.—Motor Location Sleeve & "O" Ring	46	44684	Valve—Reversing
*16	14313	Ring—"O"	*47	30498	Seal
17	43533	Ass'm.—Front End Plate	48	10219	Bearing—Ball
*18	30473	Seal—Garlock	49	30424	Pin
*19	14334	Ring—"O"	50	44693	Rotor
*20	33940	Vane—Rotor (Set of 6)	51	35186	Spacer
21	44737	Cylinder	52	10241	Bearing—Ball
22	43532	Plate—Rear End	53	44736	Frame—Hammer
*23	14777	Gasket—Back Cap	54	44673	Bearing—Spindle Cam
24	44682	Plunger—Reversing Valve	55	44309	Cam—Spindle
25	41213	Spring	56	21404	Spring
26	08001	Screw—1/4"	57	35094	Washer
27	35030	Washer	58	35093	Washer—Split (Set of 2)
28	13221	Swivel—Hose	59	35191	Lever
29	41214	Spring—Valve	60	30632	Pin—Roll
30	21541	Retainer—Ring	61	14351	Protector—Rubber (293)
				14351G	Protector—Rubber (294)
			62	21447	Bail

*These parts included in Tune-Up Set No. 43912

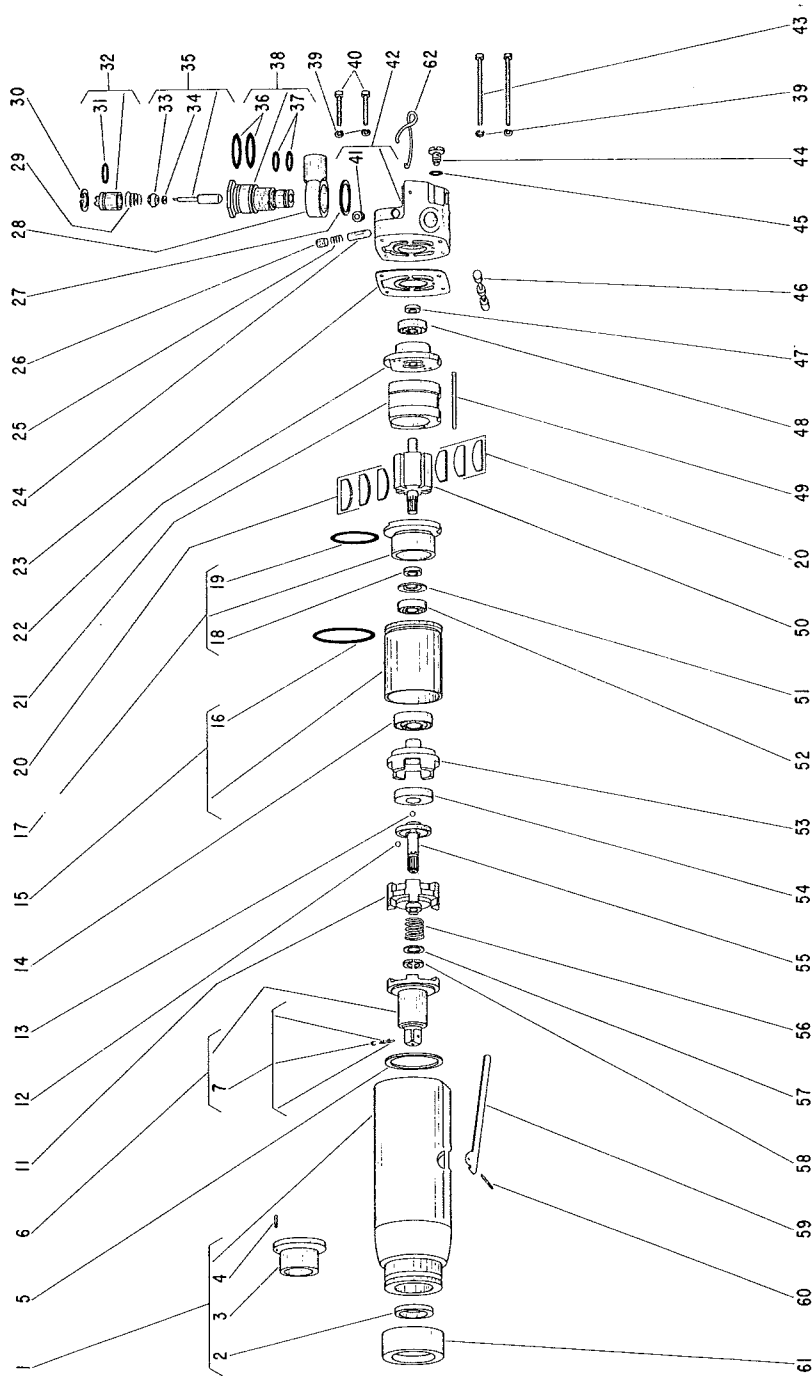
SIoux TOOLS INC.
SIoux CITY, IOWA, U.S.A. 51102

SIoux



TOOLS

Parts List for No's. 293 & 294
AIR IMPACT WRENCH



Furnish Catalog and Serial Number When Ordering Parts

This pdf incorporates the following model numbers:

293, 294