



**NOTE: Parts are no longer available for this tool.**

**The manual will continue on the next page.**

# SIoux



# TOOLS

## Parts List for No. 1510 SPH GEAR MOTOR G.E. 251C863

(P 1, 2, 3, 4)

(Ser. No's. A101 & Up)

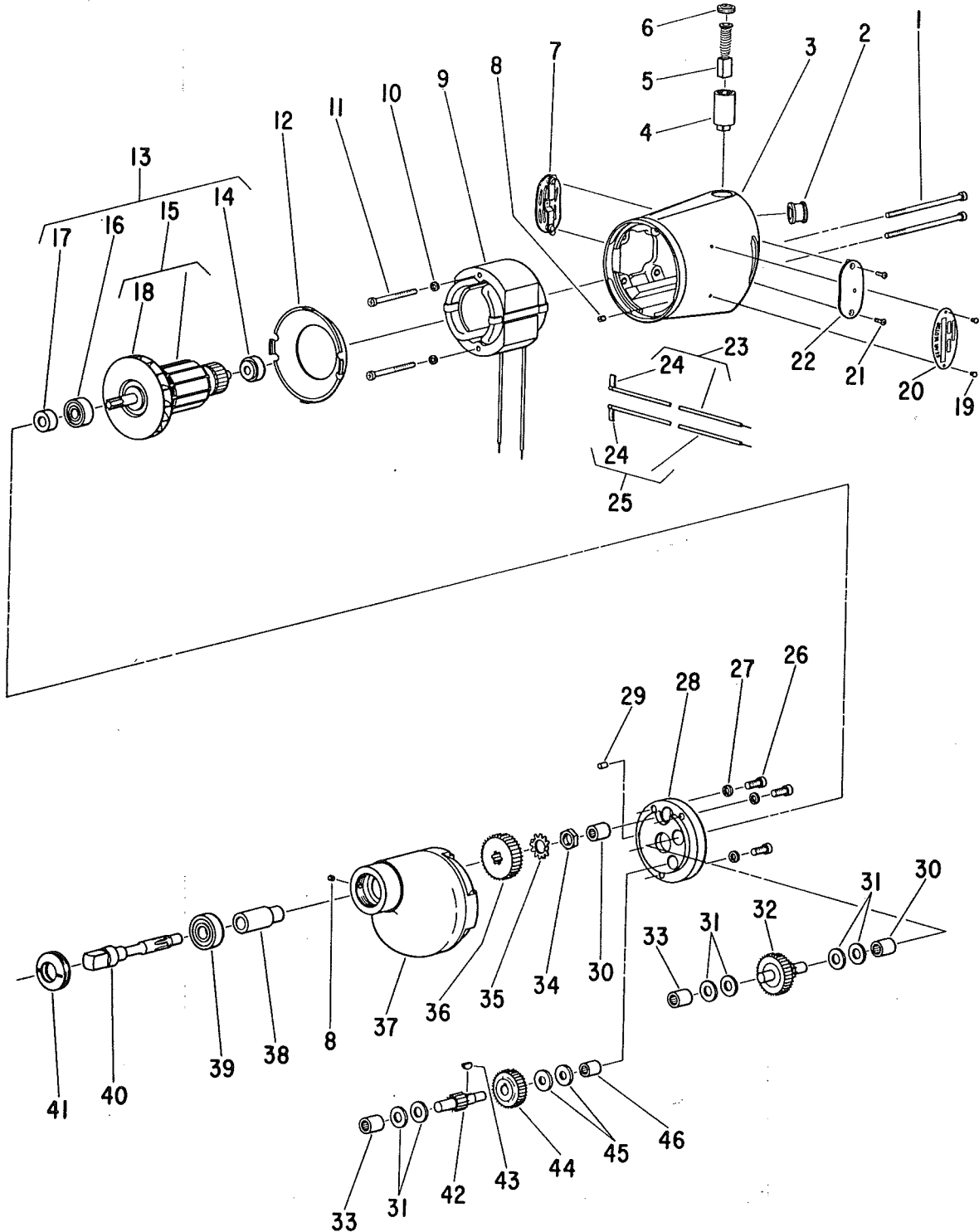
When Ordering Parts, Specify Voltage, also Serial & Unit  
Number for Which the Parts are Wanted

Fig- ure	Part No.	Name	Fig- ure	Part No.	Name
1	07129	Screw (4)	24	18860	Clip—Terminal (2)
2	14208	Grommet—Rubber	25	18862	Wire—Lead
3	12321	Housing	26	08134	Screw (3)
4	18076	Holder—Brush (2)	27	09748	Washer—Lock (3)
5	18004	Brush (Set of 2) (Specify Voltage)	28	12035	Cover—Gear Case [Incl's. (1) Fig. 30 & 46]
6	18120	Cap—Brush Holder (2)	29	24009	Pin
7	23000	Cap—Inspection Hole (Open)	30	10003	Bearing—Needle (2)
8	07000	Screw—Set (3)	31	25053	Washer—Thrust (6)
9	17035	Field (Specify Voltage & "P" No.)	32	19211	Gear—2nd Compound Cluster
10	09724	Washer—Lock (2)	33	10004	Bearing—Needle (2)
11	07136	Screw (2)	34	24038	Nut—Tool Spindle
12	25044	Plate—Baffle	35	25055	Washer—Lock
13	16781	Armature with Fan & Brgs. (Specify Voltage & "P" No.)	36	19210	Gear—Tool Spindle
14	10106	Bearing—Ball	37	12060	Case—Gear
15	16535	Armature with Fan (Specify Voltage & "P" No.)	38	44770	Sleeve—Tool Spindle
16	10208	Bearing—Ball	39	10196	Bearing—Ball
17	24041	Slinger—Grease	40	22654	Spindle—Tool (Square)
18	21578	Fan	41	23001	Seal—Oil
19	09954	Screw—Drive (2)	42	19441	Pinion—1st Compound
20	20194	Plate—Name	43	30010	Key—Woodruff
21	06093	Screw (4)	44	19026	Gear—1st Compound
22	23009	Cap—Inspection Hole (Closed)	45	25054	Washer (2)
23	18863	Wire—Lead	46	10002	Bearing—Needle

**SIoux TOOLS INC.**  
SIoux CITY, IOWA, U.S.A. 51102

## Parts List for No. 1510 SPH GEAR MOTOR G.E. 251C863

(P 1, 2, 3, 4)  
(Ser. No's. A101 & Up)



When Ordering Parts, Specify Voltage, also Serial & Unit  
Number for Which the Parts are Wanted

This pdf incorporates the following model numbers:

1510 SPH