



**NOTE: Parts are no longer available for this tool.**

**The manual will continue on the next page.**



# Parts List for No. 1510 M GEAR MOTOR G.E. 243C492

(SERIAL NO'S. STARTING WITH "C")

When Ordering Parts, Specify Voltage, also Serial & Unit  
Number of the Unit for Which the Parts are Wanted

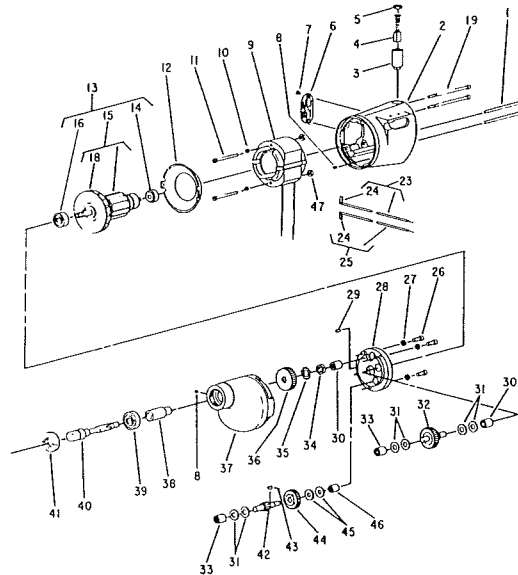


Fig- ure	Part No.	Name	Fig- ure	Part No.	Name
1	07127	Screw #10-24x4-1/8" (2)*	27	09748	Washer—Lock 1/4" (3)*
	28405-040	Sleeve Insulation (2)*	28	12429	Cover—Gear Case (Incl. Figs. 46 & 30)
2	12320	Housing	29	24009	Pin
3	18083	Holder—Brush (2)*	30	10003	Bearing—Needle (2)*
4	18031	Brush—Pair (115V)	31	25053	Washer (6)*
	65446	Brush—Pair (230V)	32	19211	Gear—2nd Compound Cluster
5	18120	Cap—Brush Holder (2)*	33	10004	Bearing—Needle (2)*
6	23000	Cover—Open Inspection Hole	34	24038	Nut—Tool Spindle
7	06090	Screw #4x1/2" (2)*	35	25073	Washer—Lock
8	07000	Screw #10-24x3/16 (3)*	36	19210	Gear—Tool Spindle
9	28705	Field—Motor (115V)	37	12232	Case—Gear
	28705J	Field—Motor (230V)	38	44770	Sleeve—Tool Spindle
10	09724	Washer—Lock #10 (2)*	39	10196	Bearing—Ball
11	07145	Screw #10-24x1-3/4" (2)*	40	22654	Spindle—Tool
12	25044	Plate—Baffle	41	23001	Seal—Oil
13	16863	Armature with Fan & Bearings (115V)	42	19441	Pinion—1st Compound
	16863J	Armature with Fan & Bearings (230V)	43	30010	Key—Woodruff
14	10931	Bearing—Ball	44	19234	Gear—1st Compound
15	28704	Armature With Fan (115V)	45	25054	Washer (2)*
	28704J	Armature With Fan (230V)	46	10002	Bearing—Needle
16	10289	Bearing—Ball		20234	Plate—Name
18	21569A	Fan		09954	Screw—Drive #0 (2)*
19	07129	Screw #10-24x3-3/4" (2)*	47	34228	Spacer—Field (2)*
	28405-044	Sleeve—Insulation (2)*			
23	18863	Wire—Lead			
24	18860	Clip—Terminal (2)*			
25	18862	Wire—Lead			
26	08134	Screw—Sp. 1/4-20 (3)*			

\*Order Quantity As Needed

## SIoux TOOLS INC.

2901 FLOYD BOULEVARD ■ SIOUX CITY, IOWA 51102 ■

PRINTED IN U.S.A.



This pdf incorporates the following model numbers:

1510 M