



NOTE: Parts are no longer available for this tool.

The manual will continue on the next page.

SIoux**TOOLS**

Parts List for No. 1510 M GEAR MOTOR
G.E. 243C492

(SERIAL A101 & UP)

When Ordering Parts, Specify Voltage, also Serial & Unit
Number of the Unit for Which the Parts are Wanted

Fig- ure	Part No.	Name	Fig- ure	Part No.	Name
1	23001	Seal—Oil	25	10004	Bearing—Needle (2)
2	22654	Spindle—Tool	26	25053	Washer (6)
3	10196	Bearing—Ball	27	19211	Gear—2nd Compound Cluster
4	44770	Sleeve—Tool Spindle	28	19441	Pinion—1st Compound
5	12232	Case—Gear	29	30010	Key—Woodruff
6	19210	Gear—Tool Spindle	30	19026	Gear—1st Compound
7	25055	Washer—Lock	31	25054	Washer (2)
8	24038	Nut—Tool Spindle	32	10002	Bearing—Needle
9	10003	Bearing—Needle (2)	33	10208	Bearing—Ball
10	12035	Cover—Gear Case (With Needle Bearing)	34	21578	Fan
11	09748	Washer—Lock (3)	35	16535	Armature with Fan (Specify Voltage & "G" No.)
12	08134	Screw—1/4" (3)	36	10106	Bearing—Ball
13	24041	Slinger—Grease	37	16781	Armature with Fan & Bearings (Specify Voltage & "G" No.)
14	25044	Plate—Baffle	38	18860	Clip—Terminal (2)
15	07136	Screw #10 (2)	39	17035	Field—Motor (Specify Voltage & "G" No.)
16	09724	Washer—Lock (2)	40	07127	Screw #10 (2)
17	06093	Screw #4 (2)		07129	Screw #10 (2)
18	23000	Cover—Open Inspection Hole	41	18863	Wire—Lead
19	07000	Screw—#10 (3)	42	18862	Wire—Lead
20	12320	Housing		20234	Plate—Name
21	18076	Holder—Brush (2)		09954	Screw—Drive #0 (2)
22	18004	Brush (2)			
23	18121	Cap—Brush Holder (2)			
24	24009	Pin			

SIoux TOOLS INC.
SIoux CITY, IOWA, U.S.A. 51102

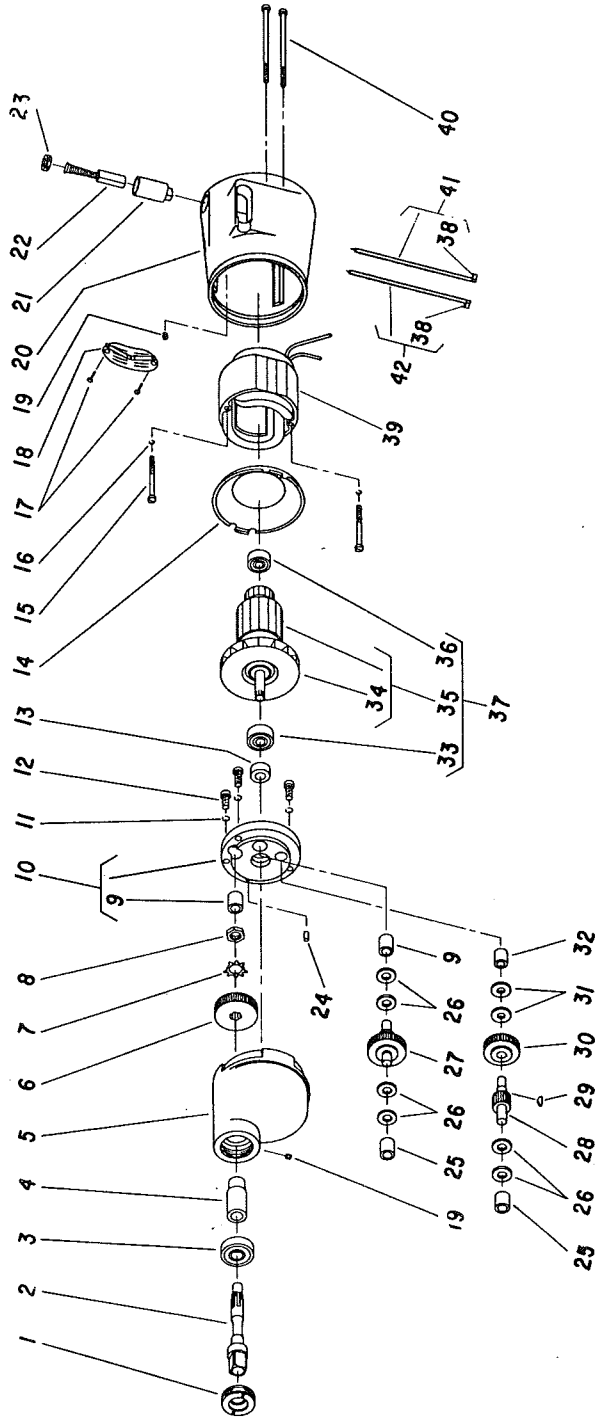
SIoux



TOOLS

Parts List for No. 1510 M GEAR MOTOR G.E. 243C492

(SERIAL A101 & UP)



When Ordering Parts, Specify Voltage, also Serial & Unit
Number of the Unit for Which the Parts are Wanted

This pdf incorporates the following model numbers:

1510 M