



NOTE: Parts are no longer available for this tool.

The manual will continue on the next page.

SIoux**TOOLS**

Parts List for No's. 1947 & 1948

AIR DIE GRINDER

Furnish Catalog and Serial Number When Ordering Parts

Fig- ure	Part No.	Name	Fig- ure	Part No.	Name
1	44468	Deflector	23	20381	Plate—Name (1947) (Up to Serial 2699)
2	21104	Nut—Collet (1947)		20382	Plate—Name (1948) (Up to Serial 2699)
3	21105	Piece—Nose (1947)	24	14391	Ring—"O"
4	21100	Collet—1/4" (1947)	25	43357	Ass'm.—Housing Block (Up to Serial 1050)
	21101	Collet—3/16" (1947)		43445	Ass'm.—Housing Block (Serial 1051 & up)
	21102	Collet—1/8" (1947)	26	21529	Ring—Retaining
5	21106	Body—Collet (1947)	27	10255	Bearing—Ball
6	43351	Chuck—1/4" Complete Collet (1947)	28	43355	Vane—Rotor (Set of 3)
	43349	Chuck—1/8" Complete Collet (1947)	29	44491	Cylinder (Up to Serial 1050)
	43350	Chuck—3/16" Complete Collet (1947)		44656	Cylinder (Serial 1051 & up)
7	44467	Support—Bearing	30	10526	Plate—Front End
8	44516	Spacer—Rotor	31	10259	Bearing—Ball
9	44517	Rotor	32	44514	Housing
10	10527	Plate—Upper End	33	21098	Body—Collet (1948)
11	43330	Ass'm.—Valve	34	44440	Collet—1/4" (1948)
12	14394	Ring—"O"		44522	Collet—1/8" (1948)
13	21429	Spring		44523	Collet—3/16" (1948)
14	43297	Ass'm.—Valve	35	21097	Nut—Collet (1948)
15	14291	Ring—"O"	36	43343	Chuck—1/4" Complete Collet (1948)
16	14350	Valve		43345	Chuck—1/8" Complete Collet (1948)
17	25957	Washer		43344	Chuck—3/16" Complete Collet (1948)
18	21443	Spring		30465	Wrench—9/16" Open End
19	30463	Screen		30466	Wrench—11/16" Open End
20	30089	Bushing			
21	09954	Screw—Drive (4)			
22	20380	Plate—Name (Up to Serial 2699)			

SIoux TOOLS INC.

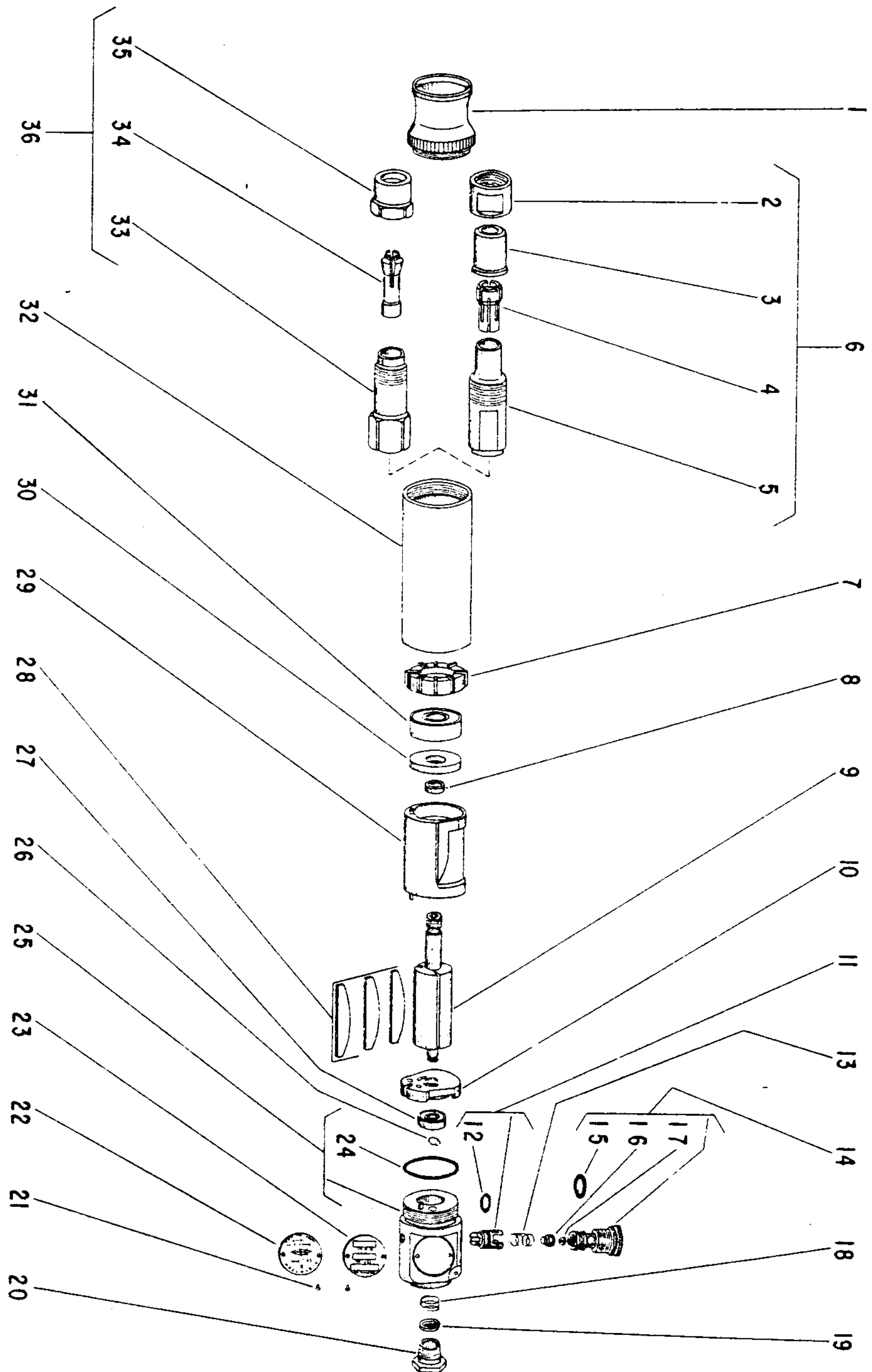
SIoux CITY, IOWA, U.S.A. 51102

SIoux



TOOLS

Parts List for No's. 1947 & 1948 AIR DIE GRINDER



Furnish Catalog and Serial Number When Ordering Parts

This pdf incorporates the following model numbers:

1947, 1948