



NOTE: Parts are no longer available for this tool.

The manual will continue on the next page.

SIoux**TOOLS**

Parts List for No's. 1953 & 1954 AIR DIE GRINDER

Furnish Catalog, Serial and Model Number When Ordering Parts

Fig- ure	Part No.	Name	Fig- ure	Part No.	Name
1	44489	Deflector		20371	Name (1953) (Up to Serial Starting with "B")
2	21104	Nut—Collet (1953)		20372	Plate—Name (1954) (Up to Serial Starting with "B")
3	21105	Picce—Nose (1953)	26	12300	Housing
4	21100	Collet—1/4" (1953)	27	10253	Bearing—Ball
	21101	Collet—3/16" (1953)	28	44487	Rotor
	21102	Collet—1/8" (1953)	29	13207	Plate—Front End
5	21103	Body—Collet (1953)	30	44488	Spacer—Rotor
6	10257	Bearing—Ball	31	44490	Ring—Lock
7	33740	Ass'm.—Cylinder & Pins	32	21096	Body—Collet (1954)
8	33737	Vane—Rotor (Set of 4)	33	44440	Collet—1/4" (1954)
9	13161	Plate—Upper End		44522	Collet—1/8" (1954)
10	21491	Ring—Retaining		44523	Collet—3/16" (1954)
11	43316	Ass'm.—Speed Control	34	21097	Nut—Collet (1954)
12	14291	Ring—"O" (2)	35	43340	Chuck—1/4" Complete Collet (1954)
13	33557	As'm.—Valve		43342	Chuck—1/8" Complete Collet (1954)
14	14350	Valve		43341	Chuck—3/16" Complete Collet (1954)
15	25957	Washer	36	43348	Chuck—1/4" Complete Collet (1953)
16	43304	Seat—Valve		43346	Chuck—1/8" Complete Collet (1953)
17	30362	Pin—Roll		43347	Chuck—3/16" Complete Collet (1953)
18	35127	Trigger—Paddle		30465	Wrench—9/16" Open End
19	21372	Spring		30466	Wrench—11/16" Open End
20	44100	Bushing—Reducing	37	44537	Ring—Thread Cover
21	21417	Spring			
22	30462	Screen			
	20380	Plate—Name (Up to Serial Starting with "B")			
	09954	Screw—Drive (4) (Up to Serial Starting with "B")			

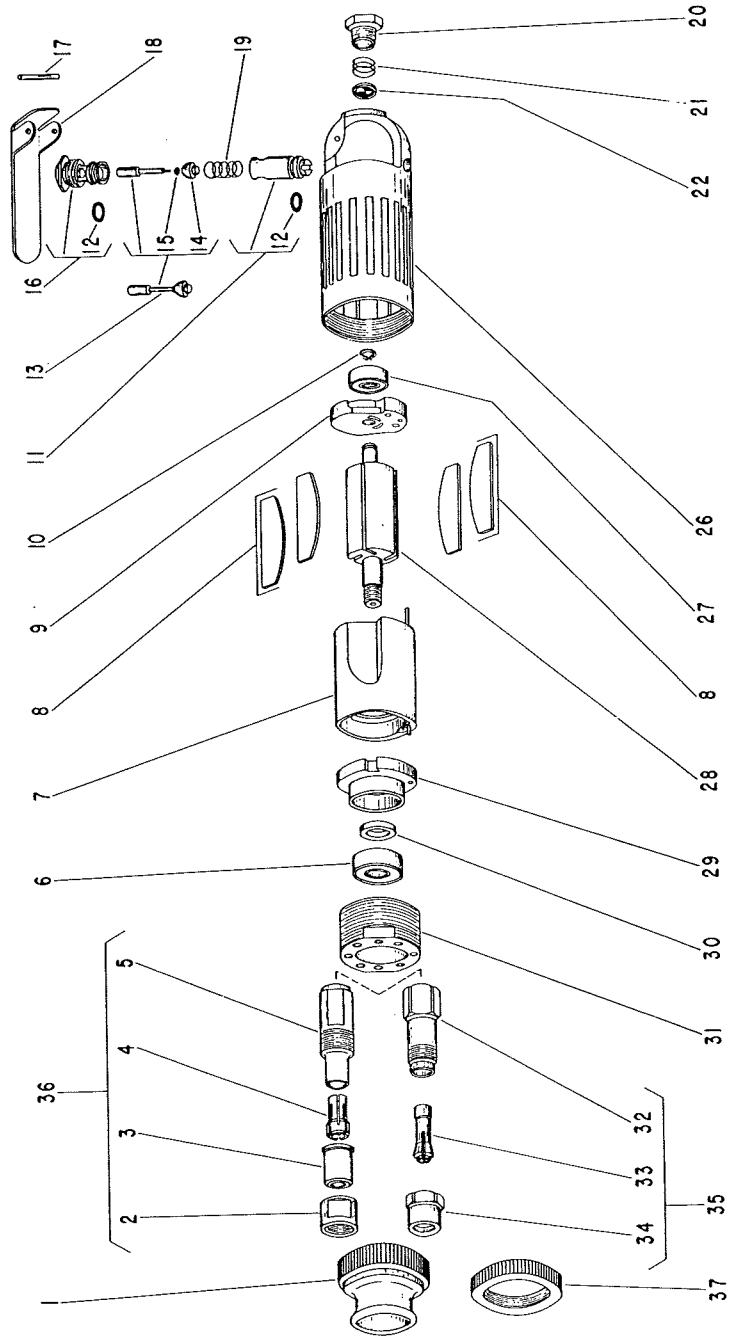
SIoux TOOLS INC.
SIoux CITY, IOWA, U.S.A. 51102

SIoux



TOOLS

Parts List for No's. 1953 & 1954 AIR DIE GRINDER



Furnish Catalog and Serial Number When Ordering Parts

This pdf incorporates the following model numbers:

1953, 1954