



NOTE: Parts are no longer available for this tool.

The manual will continue on the next page.

SIoux**TOOLS**

Parts List for No's. 1951 & 1952

AIR DIE GRINDER

Furnish Catalog, Serial and Model Number When Ordering Parts

Fig- ure	Part No.	Name	Fig- ure	Part No.	Name
1	44489	Deflector		20370	Plate—Name (1952) (Up to Serial Starting with "B")
2	21104	Nut—Collet (1951)	23	12300	Housing
3	21105	Piece—Nose (1951)	24	10253	Bearing—Ball
4	21100	Collet—1/4" (1951)	25	44487	Rotor
	21101	Collet—3/16" (1951)	26	13207	Plate—Front End
	21102	Collet—1/8" (1951)	27	44488	Spacer—Rotor
5	21103	Body—Collet (1951)	28	44490	Ring—Lock
6	10257	Bearing—Ball	29	21096	Body—Collet (1952)
7	33740	Ass'm.—Cylinder & Pins	30	44440	Collet—1/4" (1952)
8	33737	Vane—Rotor (Set of 4)		44522	Collet—1/8" (1952)
9	13161	Plate—Upper End		44523	Collet—3/16" (1952)
10	21491	Ring—Retainer	31	21097	Nut—Collet (1952)
11	43316	Ass'm.—Speed Control	32	43340	Chuck—1/4" Complete Collet (1952)
12	14291	Ring—"O" (2)		43342	Chuck—1/8" Complete Collet (1952)
13	43297	As'm.—Button Valve		43341	Chuck—3/16" Complete Collet (1952)
14	25957	Washer	33	43348	Chuck—1/4" Complete Collet (1951)
15	14350	Valve		43346	Chuck—1/8" Complete Collet (1951)
16	21372	Spring		43347	Chuck—3/16" Complete Collet (1951)
17	44100	Bushing—Reducing		30465	Wrench—9/16" Open End
18	21417	Spring		30466	Wrench—11/16" Open End
19	30462	Screen	34	44537	Ring—Thread Cover
	20380	Plate—Name (Up to Serial Start- ing with "B")			
	09954	Screw—Drive (4) (Up to Serial Starting with "B")			
	20369	Plate—Name (1951) (Up to Serial Starting with "B")			

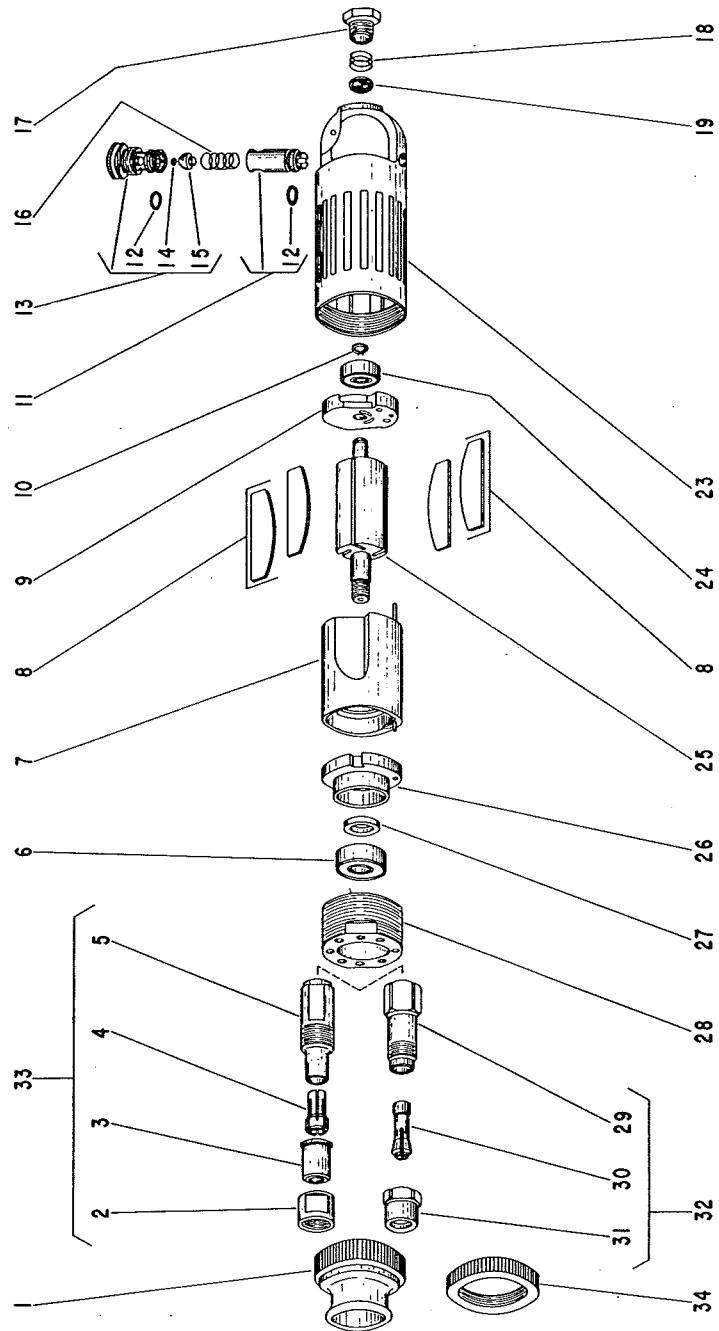
SIoux TOOLS INC.
SIoux CITY, IOWA, U.S.A. 51102

SIoux



TOOLS

Parts List for No's. 1951 & 1952 Air Die Grinder



Furnish Catalog and Serial Number When Ordering Parts

This pdf incorporates the following model numbers:

1951, 1952