



NOTE: Parts are no longer available for this tool.

The manual will continue on the next page.

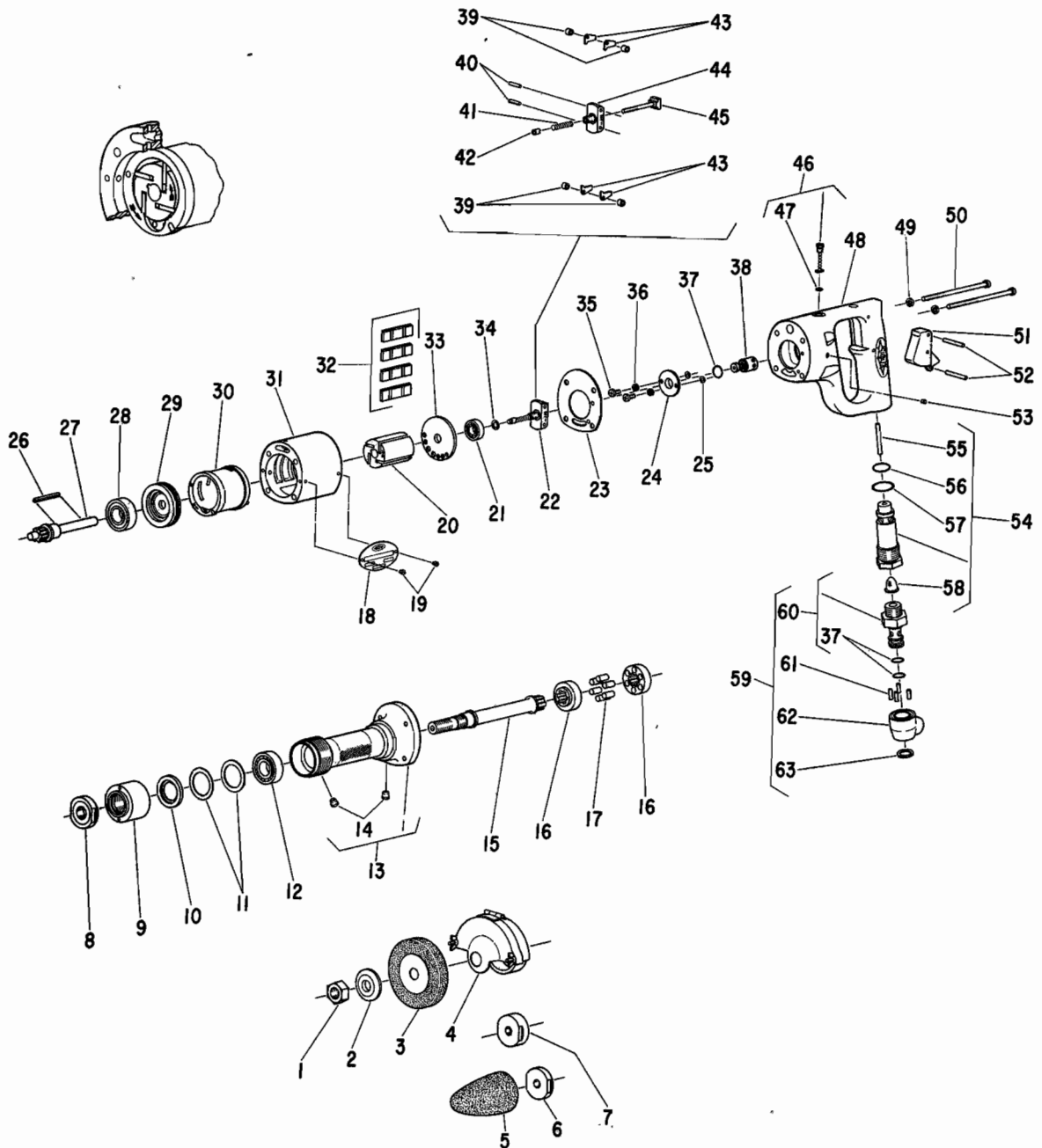
SIoux



TOOLS

Parts List for No. 511 and No. 516 HORIZONTAL AIR GRINDER

(Serial No's. starting with B)



Furnish Catalog, Serial and Model Number When Ordering Parts

SIoux**TOOLS**

Parts List for No. 511 and No. 516

HORIZONTAL AIR GRINDER

(Serial No's, starting with B)

Furnish Catalog, Serial and Model Number When Ordering Parts

Fig- ure	Part No.	Name	Fig- ure	Part No.	Name
1	09622	Nut—Hex 1/2"-13 (511)	30	43022	Assy.—Cylinder & Pin
	09600	Nut—Hex 3/8"-24 (511)	31	12276	Housing
2	44464	Flange—Outside Spindle 1/2" (511)	32	33997	Vane—Rotor (Set of 4)
	44708	Flange—Outside Spindle 3/8" (511)	33	10520	End Plate—Rear
3	598	Wheel—Grinding (511) (1/2" Hole)	34	35067	Washer—Wave
4	2311	Guard (511)	35	06325	Screw (2)
5	599	Wheel—Grinding (516)	36	09704	Washer—Lock (2)
6	54117	Flange—Inside (516)	37	14312	Ring—"O" (3)
7	554	Adaptor (511) [Sp. for use on tools equipped with 3/8"-24 th'd. to convert to Cone Grinder]	38	43664	Assy.—Gov. Valve
8	54116	Flange—Inside (511)	39	44379	Spacer—Gov. Weight (4)
9	54114	Cap	40	30336	Pin—Roll (2)
10	54115	Spacer	41	21411	Spring—Gov. (Red)
11	35275	Washer—Wave (2)	42	13183	Nut—Gov. Adjusting
12	10254	Bearing—Ball	43	35069	Weight—Gov. (4)
13	53108	Assy.—Spindle Support	44	44222	Frame—Gov.
14	30356	Fitting—Grease (2)	45	43666	Assy.—Brg. Support & Spindle
15	22637	Spindle—Tool 1/2"-13 (511)	46	44253	Oiler Screw & "O" Ring
	22647	Spindle—Tool [Sp. 3/8"-24 Th'd.] (511)	47	14369	Ring—"O"
	22638	Spindle—Tool (516)	48	43073	Assy.—Handle (Incl. Fig. 46, 51, 52 & 53)
16	44460	Coupling (2)	49	09724	Washer—Lock (4)
17	14033	Pin—Drive (6)	50	07129	Screw (4)
18	20374	Plate—Name (511)	51	33967	Assy.—Trigger
	20377	Plate—Name (516)	52	30347	Pin (2)
19	06000	Screw (2)	53	30375	Fitting—Grease
20	44220	Rotor	54	33998	Assy.—Throttle Valve
21	10241	Bearing—Ball	55	30424	Pin
22	43672	Assy.—Gov.	56	14274	Ring—"O"
23	14751	Gasket	57	14307	Ring—"O"
24	44245	Retainer—Gov. Valve	58	33993	Assy.—Air Screen
25	14750	Retainer—Screw (2)	59	43133	Assy.—Swivel
26	44219	Key—Rotor	60	43334	Assy.—Swivel Body
27	22636	Spindle—Rotor	61	34819	Pin (4)
28	10243	Bearing—Ball	62	13201	Swivel
29	10531	End Plate—Front	63	21523	Ring—Retaining

SIoux TOOLS INC.
SIoux CITY, IOWA, U.S.A. 51102

This pdf incorporates the following model numbers:

511, 516