



NOTE: Parts are no longer available for this tool.

The manual will continue on the next page.



**SIoux
TOOLS INC.**

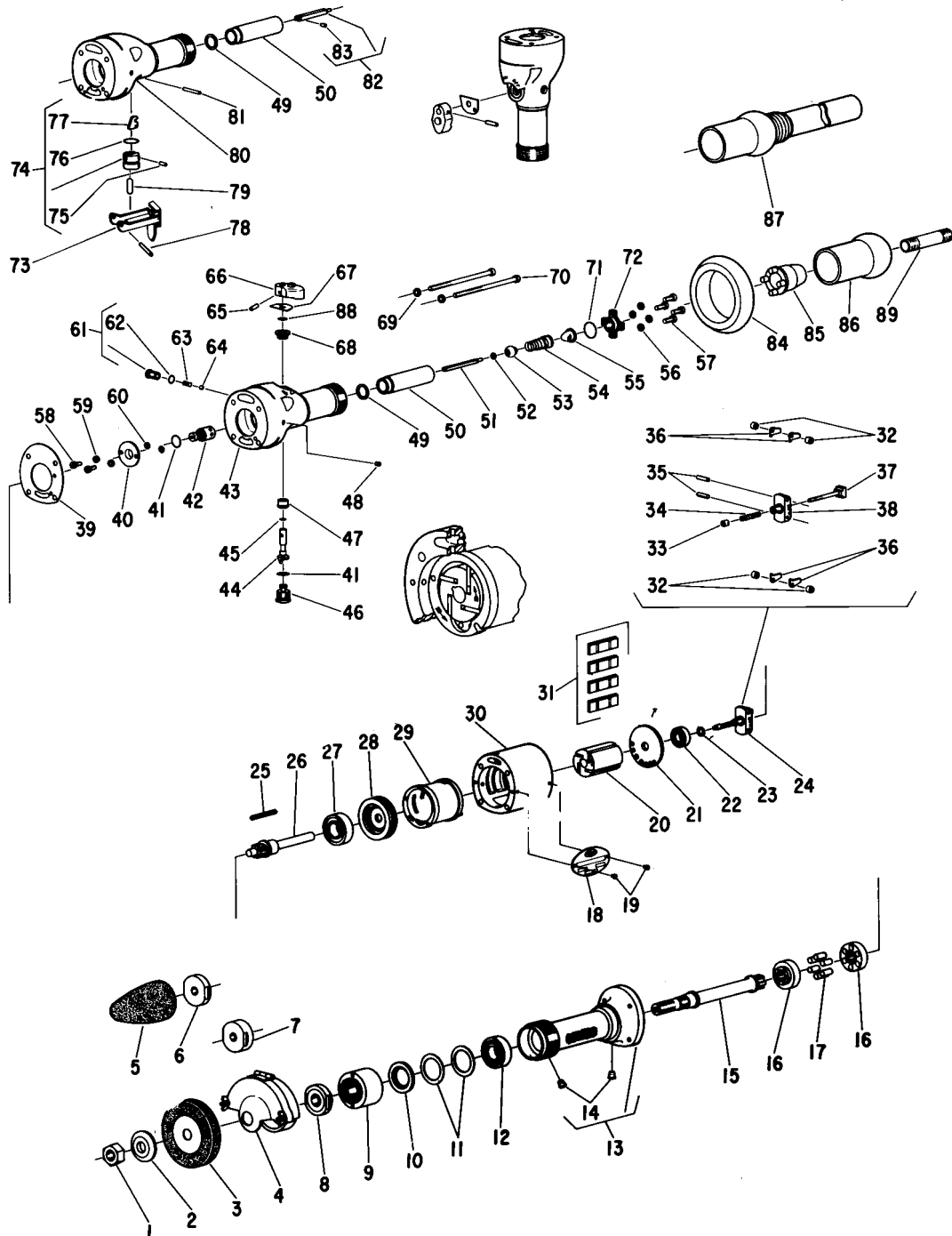
Form A215D
Dated 12/90

2901 FLOYD BOULEVARD ■ SIOUX CITY, IOWA 51102 ■

Parts List for No's. 508, 509, 513 and 514

HORIZONTAL AIR GRINDER

(508, 513 Ser. No's. Starting With "B" & "C")
(509, 514 Ser. No's. Starting With "C")



Furnish Catalog, Serial and Model Number When Ordering Parts

Parts List for No's. 508, 509, 513 and 514

HORIZONTAL AIR GRINDER

(508, 513 Ser. No's. Starting With "B" & "C")

(509, 514 Ser. No's. Starting With "C")

Furnish Catalog, Serial and Model Number When Ordering Parts

Fig- ure	Part No.	Name	Fig- ure	Part No.	Name
1	09622	Nut—Hex. 1/2"-13 (508, 509)	46	44389	Stop (508, 513)
	09600	Nut—Hex. 3/8"-24 (508, 509)	47	44390	Bushing—Inner (508, 513)
2	44464	Flange—Outside (For 1/2" Spindle) (508, 509)	48	30375	Fitting—Grease
	44708	Flange—Outside (For 3/8" Spindle) (508, 509)	49	14755	Gasket—Inlet
3	598	Wheel—Grinding (1/2" Hole) (508, 509)	50	44391	Sleeve—Valve
4	2311	Guard (508, 509)	51	44434	Rod—Valve (508, 513)
5	599	Wheel—Grinding (513, 514)	52	35119	Washer
6	54117	Flange—Inside (513, 514)	53	14372	Valve
7	554	Adaptor (508, 509) [Sp. for use on tools equipped with 3/8"-24 th'd. to convert to cone grinder]	54	21413	Spring—Valve [509, 514 (All)] [508, 513 (Ser. No's. Starting Wwith "B")]
8	54116	Flange—Inside (508, 509)		41285	Spring—Valve [508, 513 (Ser. No's. Starting With "C")]
9	54114	Cap	55	33993	Screen
10	54115	Spacer	56	09712	Washer—Lock (4)
11	35275	Washer—Wave (2)	57	06573	Screw (4)
12	10254	Bearing—Ball	58	06325	Screw (2)
13	53108	Assy.—Spindle Support	59	09704	Washer—Lock (2)
14	30356	Fitting—Grease (2)	60	14750	Retainer—Screw (2)
15	22637	Spindle—Tool 1/2"-13 (508, 509)	*61	43232	Assy.—Detent Screw & "O" Ring (508, 513)
	22647	Spindle—Tool [Sp. 3/8"-24 th'd.] (508, 509)	*62	14291	Ring—"O" (508, 513)
	22638	Spindle—Tool (513, 514)	63	21432	Spring—Detent (508, 513) (Ser. No's. Starting With "B")
16	44460	Coupling (2)	64	10902	Ball—Steel (508, 513) (Ser. No's. Starting With "B")
17	14033	Pin—Drive (6)	65	34694	Pin—Trigger (508, 513)
18	20367	Plate—Name (508)	66	53443	Trigger Conversion Kit (Momentary Lock) (508, 513) (Includes Fig. 54, 66 & 67) (Ser. No's. Starting With "B")
	20373	Plate—Name (509)		53440	Trigger [508, 513 (Ser. No's. Starting With "C")]
	20375	Plate—Name (513)	67	35118	Washer (508, 513) (Ser. No's. Starting With "B")
	20376	Plate—Name (514)		35334	Plate—Wear (508, 513) (Ser. No's. Starting With "C")
19	06000	Screw (2)	68	44378	Bushing—Outter (508, 513)
20	44220	Rotor	69	09724	Washer—Lock (4)
21	10520	End Plate—Rear	70	07129	Screw (4)
22	10241	Bearing—Ball	71	14281	Ring—"O"
23	35067	Washer—Wave	72	44388	Cap—Inlet
24	43672	Assy.—Gov.	73	63163	Ass'y.—Lever Lock (509, 514)
25	44219	Key—Rotor	74	43323	Assy.—Plunger Guide & Bell Crank (509, 514)
26	22636	Spindle—Rotor	75	34819	Pin (509, 514)
27	10243	Bearing—Ball	76	14309	Ring—"O" (509, 514)
28	10531	End Plate—Front	77	35123	Crank—Bell (509, 514)
29	43022	Assy.—Cylinder & Pin	78	30459	Pin (509, 514)
30	12276	Housing (Front Exhaust)	79	40142	Pin (509, 514)
	12291	Housing (Rear Exhaust)	80	12298	Handle (Lever Throttle) (509, 514)
31	33997	Vane Rotor (Set of 4)	81	30219	Pin (509, 514)
32	44379	Spacer—Gov. Weight (4)	82	44476	Rod—Valve (509, 514)
33	13183	Nut—Gov. Adjusting	83	30273	Pin—Roll (509, 514)
34	21411	Spring—Gov. (Red)	84	14275	Protector—Rubber
35	30336	Pin—Roll (2)	85	04207	Cover—Hose (Front Exhaust)
36	35069	Weight—Gov. (4)	86	14063	Cover—Handle (Front Exhaust)
37	43666	Assy.—Brg. Support & Spindle	87	1361	Cover—Handle (Rear Exhaust)
38	44222	Frame—Gov.	88	14291	Ring—"O" (508, 513) (Ser. No's. Starting With "B")
39	14751	Gasket (Front Exhaust)	89	40022	Nipple—Pipe
	14756	Gasket (Rear Exhaust)		63169	Ass'y.—Lever Handle Kit (Includes Figs. 49 & 50, 73 thru 83)
40	44245	Retainer—Gov. Valve			
41	14312	Ring—"O" (2)			
42	43664	Assy.—Gov. Valve			
43	43228	Handle—Thumb Throttle (Incl. Fig. 47, 48 & 68) (508, 513)			
44	43253	Assy.—Crank (508, 513)			
45	14323	Ring—"O" (508, 513) (Ser. No's. Starting With "B")			

*Used on all 508 & 513 units up to & including some early Models Serial No's. starting with "C".



2901 FLOYD BOULEVARD ■ SIOUX CITY, IOWA 51102 ■

This pdf incorporates the following model numbers:

508, 509, 513, 514