



NOTE: Parts are no longer available for this tool.

The manual will continue on the next page.

SIoux



TOOLS

Parts List for No. 1510 SPM GEAR MOTOR

G.E. 6517087

(G 1, 2, 5, 6, 7, 8 Ser. M-4600 & Up)

(G 3 & 4 Ser. A101 & Up)

Furnish Catalog. Serial and Model Number When Ordering Parts

Fig- ure	Part No.	Name	Fig- ure	Part No.	Name
1	07129	Screw (4)	29	24009	Pin
2	14208	Grommet—Rubber	30	10003	Bearing—Needle (2)
3	12321	Housing	31	25053	Washer—Thrust (6)
4	18076	Holder—Brush (2)	32	19211	Gear—2nd Compound Cluster (G 3 & 4)
5	18004	Brush (Set of 2) (Specify Voltage)	33	10004	Bearing—Needle (2)
6	18120	Cap—Brush Holder (2)	34	24038	Nut—Tool Spindle
7	23000	Cap—Inspection Hole (Open)	35	25055	Washer—Lock
8	07000	Screw—Set (3)	36	19210	Gear—Tool Spindle (G 3 & 4)
9	17035	Field (G 1, 2, 3, 4) (Specify Voltage & "G" No.)	37	12060	Case—Gear
	17523	Field (G 5, 6, 7, 8) (Specify Voltage & "G" No.)	38	44770	Sleeve—Tool Spindle (G 3 & 4)
10	09724	Washer—Lock (2)	39	10196	Bearing—Ball
11	07136	Screw (2)	40	22654	Spindle—Tool (Square) (G 3 & 4)
12	25044	Plate—Baffle	41	23001	Seal—Oil
13	16781	Armature with Fan & Brgs. (G 1, 2, 3, 4) (Specify Voltage & "G" No.)	42	19441	Pinion—1st Compound (G 3 & 4)
	16805	Armature with Fan & Brgs. (G 5, 6, 7, 8) (Specify Voltage & "G" No.)		19407	Pinion—1st Compound (G 1, 2, 5, 6, 7, 8)
14	10106	Bearing—Ball	43	30010	Key—Woodruff [G 1, 2, 5, 6, 7, 8 (2)] [G 3 & 4 (1)]
15	16535	Armature with Fan (G 1, 2, 3, 4) (Specify Voltage & "G" No.)	44	19026	Gear—1st Compound
	16571	Armature with Fan (G 5, 6, 7, 8) (Specify Voltage & "G" No.)	45	25054	Washer (2)
16	10208	Bearing—Ball	46	10002	Bearing—Needle
17	24041	Slinger—Grease	47	19034	Gear—2nd Compound (G 1, 2, 5, 6, 7, 8)
18	21578	Fan	48	19460A	Pinion—2nd Compound (G 1, 2, 5, 6, 7, 8)
19	09954	Screw—Drive (2)	49	19196A	Gear—Tool Spindle (G 1, 2, 5, 6, 7, 8)
20	20104	Plate—Name	50	24025	Sleeve—Tool Spindle (G 1, 2, 5, 6, 7, 8)
21	06093	Screw (4)	51	30001	Key—Woodruff (G 1, 2, 5, 6, 7, 8)
22	23009	Cap—Inspection Hole (Closed)	52	22557	Spindle—Tool (Square) (G 1 & 2)
23	18863	Wire—Lead (G 1, 2, 3, 4)	53	22584	Spindle—Tool (Round) (G 5, 6, 7, 8)
24	18860	Clip—Terminal (2) (G 1, 2, 3, 4)		24925	Pin—Guide (For Alignment of Gear Case to Housing)
25	18862	Wire—Lead (G 1, 2, 3, 4)			
26	08134	Screw (3)			
27	09748	Washer—Lock (3)			
28	12035	Cover—Gear Case [Incl's. (1) Fig. 30 & 46]			

SIoux TOOLS INC.
SIoux CITY, IOWA, U.S.A. 51102

SIoux

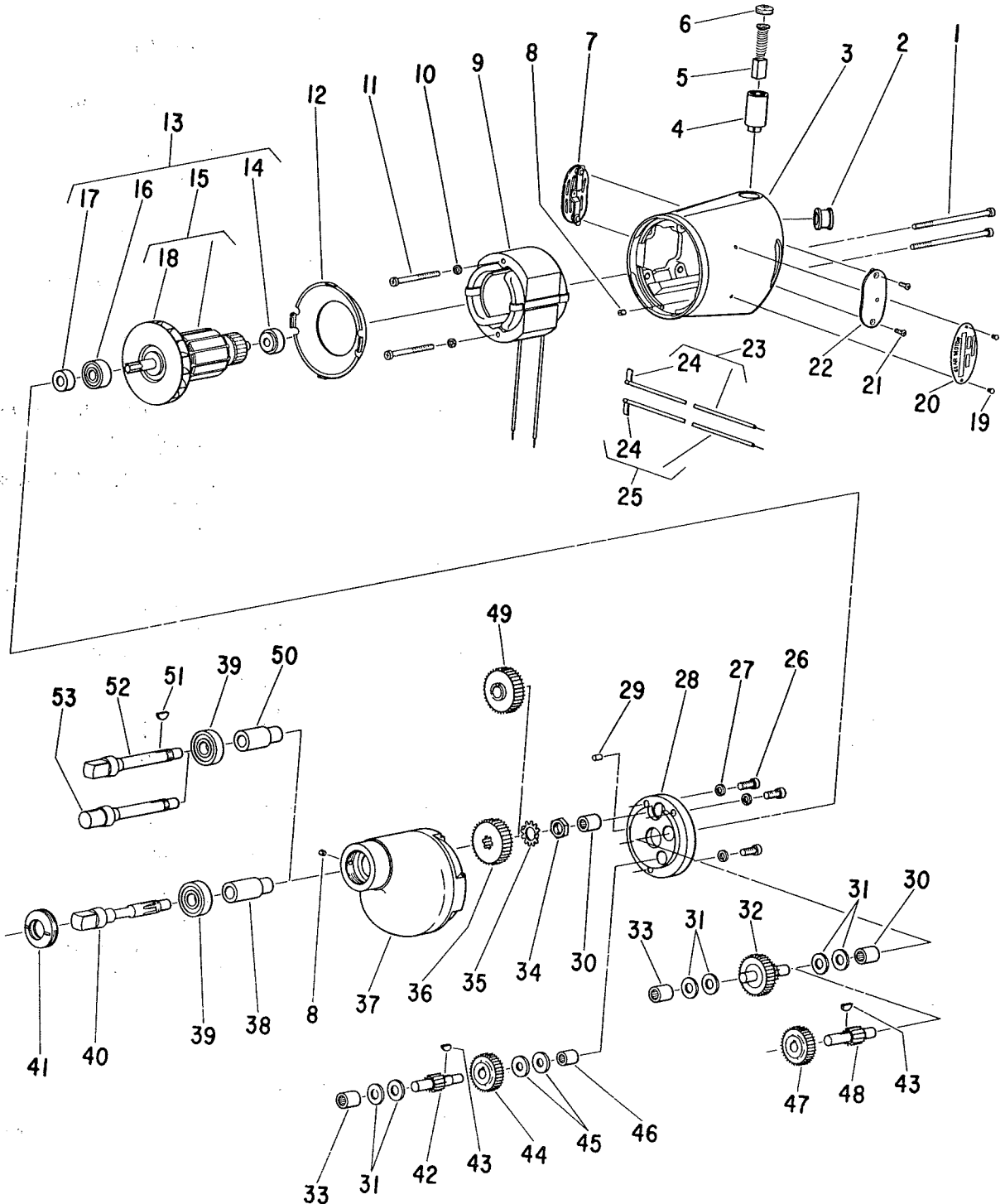


TOOLS

G.E. 6517087

Parts List for No. 1510 SPM GEAR MOTOR

(G 1, 2, 5, 6, 7, 8 Ser. M-4600 & Up)
(G 3 & 4 Ser. A101 & Up)



Furnish Catalog, Serial and Model Number When Ordering Parts

This pdf incorporates the following model numbers:

1510