



NOTE: Parts are no longer available for this tool.

The manual will continue on the next page.

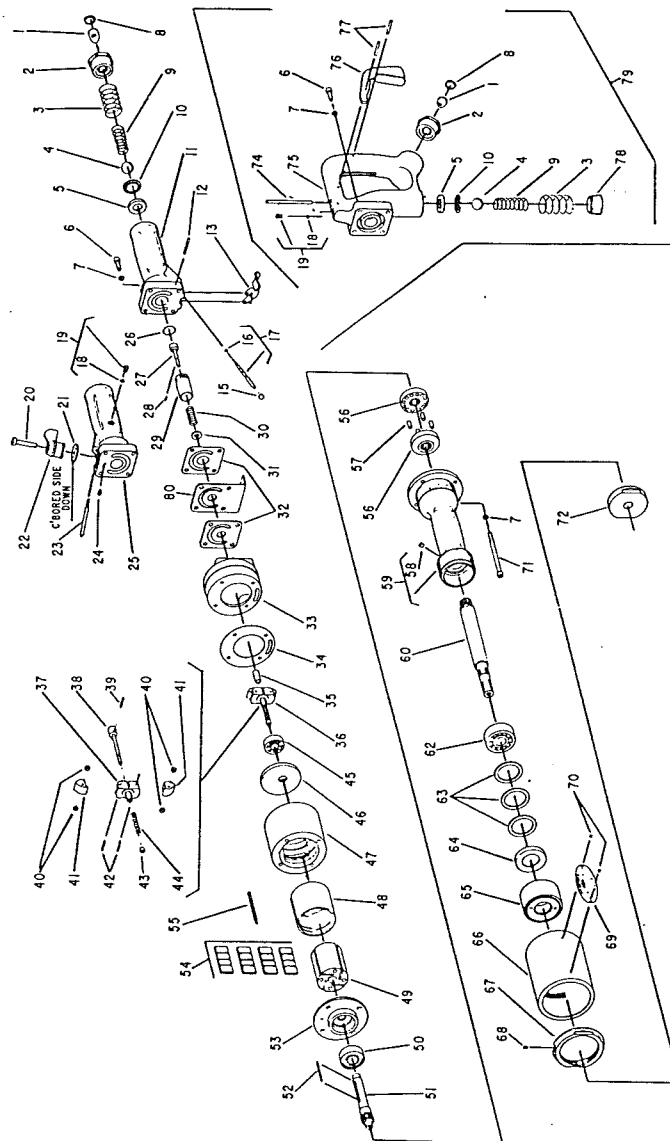


SIoux
TOOLS INC.

2901 FLOYD BOULEVARD ■ SIOUX CITY, IOWA 51102 ■

Form A210E
Dated 12/90

Parts List For No. 518 HORIZONTAL AIR CONE WHEEL GRINDER (SER. NO'S. STARTING WITH "E")



Furnish Catalog, Serial and Model Number When Ordering Parts

Parts List For No. 518 HORIZONTAL AIR CONE WHEEL GRINDER SER. NO'S. STARTING WITH "E")

Furnish Catalog, Serial and Model Number When Ordering Parts

Fig- ure	Part No.	Name	Fig- ure	Part No.	Description
1	33736	Screen	36	43372	Ass'm.—Governor
2	33843	Ass'm.—Bushing & Retainer	37	34996	Body—Governor
3	21396	Spring	38	43273	Spindle—Governor
4	10294	Ball—Steel	39	30452	Pin—Roll
5	14344	Seat—Throttle Valve	40	44037	Spacer—Gov. Weight (4)*
6	08232	Screw [1/4-20x5/8 (4)*] (Thumb and Grip Handle)	41	11517	Weight—Governor (2)*
	08288	Screw [1/4-20x7/8 (4)*] (Lever Handle)	42	30362	Pin—Roll (2)*
7	09750	Washer—Lock 1/4" (8)*	43	13164	Nut—Governor Adjusting
8	21512	Ring—Retaining	44	21390	Spring—Governor
9	21418	Spring—Tapered	45	10175	Bearing—Ball
10	44011	Retainer—Seat	46	33734	Plate—Top End
11	33735	Handle—Lever Throttle	47	12755	Housing
12	44042	Pin	48	34984	Cylinder
13	35009	Lever—Throttle	49	34985	Rotor
15	14039	Button—Throttle	50	10195	Bearing—Ball
16	14349	Ring—"O"	51	44023	Spindle—Rotor
17	33848	Ass'm.—Plunger & "O" Ring	52	34992	Key—Rotor
18	14369	Ring—"O"	53	33851	Plate—Front End
19	45253	Oiler Screw & "O" Ring	54	33837	Vane—Rotor (Set of 4)
20	44141	Pivot	55	34991	Key—Cylinder
21	54377	Plate—Wear	56	44021	Coupling (2)*
22	53446	Ass'm.—Lever & Cam	57	14033	Pin—Drive (12)*
23	44251	Plunger—Valve	58	30356	Fitting—Grease
24	07186	Screw—#10	59	12348	Housing—Spindle
25	33994	Handle—Thumb Throttle	60	22633	Spindle—Tool
26	14345	Ring—"O"	62	10126	Bearing—Ball
27	34994	Valve—Governor (Lever & Thumb Handle)	63	35152	Washer—Wave (3)*
	44539	Valve—Governor (Grip Handle)	64	54064	Spacer
28	30355	Pin	65	54063	Cap
29	13167	Body—Governor Valve	66	44026	Cover—Housing
30	21385	Spring—Valve	67	44024	Nut—Cover Lock
31	35010	Retainer—Spring	68	07002	Screw—Safety
32	14799	Gasket [(Lever (2)* & Thumb Handle (1))	69	20366	Plate—Name
	14745	Gasket (Grip Handle)	70	09900	Rivet—Steel (2)*
33	53694	Housing—Governor (Lever & Thumb Handle) Includes Fig. 71 [(4) 1/4"-20"x3 1/2"] & Fig. 7 (4)	71	08296	Screw 1/4"-20x3 1/2" (4)*
	53696	Housing—Governor (Grip Handle) [Includes Fig. 71 [(4) & 1/4"-20"x3 1/2"] & Fig. 7 (4)	74	44435	Flange—Inside
34	14739	Gasket	75	33909	Ass'm.—Grip Handle
35	44544	Connector—Gov. (Thumb Handle)	76	33944	Ass'm.—Trigger
	65134	Connector—Gov. (Lever Handle)	77	30347	Pin
	44547	Connector—Gov. (Grip Handle)	78	30381	Plug—Pipe
			79	53086	Set—Grip Handle (Includes Fig. 7 (4) 26 thru 35, 38 & 71 (4) [With 1/4"-20 Thd.]
			80	65133	Rest—Tool (Lever Handle)

*Order Quantity As Needed



**SIoux
TOOLS INC.**

2901 FLOYD BOULEVARD ■ SIOUX CITY, IOWA 51102 ■

PRINTED IN U.S.A.

This pdf incorporates the following model numbers:

518