



NOTE: Parts are no longer available for this tool.

The manual will continue on the next page.

SIoux**TOOLS**

Parts List for No. 518

HORIZONTAL AIR CONE WHEEL GRINDER

(SERIAL NO.'S STARTING WITH "B", "C" & "D")

Furnish Catalog, Serial and Model Number When Ordering Parts

| Fig- ure | Part No. | Name | Fig- ure | Part No. | Name |
|-------------|-------------|---|-------------|-------------|---|
| 1 | 33736 | Screen | 37 | 34996 | Body—Governor |
| 2 | 33843 | Ass'm.—Bushing & Retainer | 38 | 43273 | Spindle—Governor |
| 3 | 21396 | Spring | 39 | 30452 | Pin—Roll |
| 4 | 10294 | Ball—Steel | 40 | 44037 | Spacer—Gov. Weight (4)* |
| 5 | 14344 | Seat—Throttle Valve | 41 | 11517 | Weight—Gov. (2)* |
| 6 | 08232 | Screw— $\frac{1}{4}$ " (4)* | 42 | 30362 | Pin—Roll (2)* |
| 7 | 09750 | Washer—Lock $\frac{1}{4}$ " (8)* | 43 | 13164 | Nut—Governor Adjusting |
| 8 | 21512 | Ring—Retaining | 44 | 21390 | Spring—Gov. |
| 9 | 21418 | Spring—Tapered | 45 | 10175 | Bearing—Ball |
| 10 | 44011 | Retainer—Seat | 46 | 33734 | Plate—Top End |
| 11 | 33735 | Handle—Lever Throttle | 47 | 12755 | Housing |
| 12 | 44042 | Pin | 48 | 34984 | Cylinder |
| 13 | 35009 | Lever—Throttle | 49 | 34985 | Rotor |
| 15 | 14039 | Button—Throttle | 50 | 10195 | Bearing—Ball |
| 16 | 14349 | Ring—"O" | 51 | 44023 | Spindle—Rotor |
| 17 | 33848 | Ass'm.—Plunger & "O" Ring | 52 | 34992 | Key—Rotor |
| 18 | 14369 | Ring—"O" | 53 | 33851 | Plate—Front End |
| 19 | 44253 | Oiler Screw & "O" Ring | 54 | 33837 | Vane—Rotor (Set of 4) |
| 20 | 44141 | Pivot | 55 | 34991 | Key—Cylinder |
| 21 | 54377 | Plate—Wear | 56 | 44021 | Coupling (2)* |
| 22 | 53434 | Ass'm.—Lever & Cam Kit (Incl's. Fig. 21) (Ser. No's. Starting with "B") | 57 | 14033 | Pin—Drive (12)* |
| | 53446 | Ass'm.—Lever & Cam (Ser. No's Starting with "C") | 58 | 30356 | Fitting—Grease |
| 23 | 44251 | Plunger—Valve | 59 | 12348 | Housing—Spindle |
| 24 | 07186 | Screw—#10 | 60 | 22633 | Spindle—Tool |
| 25 | 33994 | Handle—Thumb Throttle | 62 | 10126 | Bearing—Ball |
| 26 | 14345 | Ring—"O" | 63 | 35152 | Washer—Wave (3)* |
| 27 | 34994 | Valve—Governor (Lever & Thumb Handle) | 64 | 54064 | Spacer |
| | 44539 | Valve—Governor (Grip Handle) | 65 | 54063 | Cap |
| 28 | 30355 | Pin | 66 | 44026 | Cover—Housing |
| 29 | 13167 | Body—Governor Valve | 67 | 44024 | Nut—Cover Lock |
| 30 | 21385 | Spring—Valve | 68 | 07002 | Screw—Safety |
| 31 | 35010 | Retainer—Spring | 69 | 20366 | Plate—Name |
| 32 | 14799 | Gasket (Lever & Thumb Handle) | 70 | 09900 | Rivet—Steel (2)* |
| | 14745 | Gasket (Grip Handle) | 71 | 08272 | Screw $\frac{1}{4}$ "-28 x $3\frac{1}{2}$ " (4)* |
| 33 | 53694 | Housing—Governor (Lever & Thumb Handle) | | | [Up to Ser. No. "D"] |
| | | Includes Fig. 71 [(4) $\frac{1}{4}$ "-20 x $3\frac{1}{2}$ "] & Fig. 7 (4) | | | Screw $\frac{1}{4}$ "-20 x $3\frac{1}{2}$ " (4)* |
| | 53696 | Housing—Governor (Grip Handle) | | | [Ser. "D" & Up] |
| | | Includes Fig. 71 [(4) $\frac{1}{4}$ "-20 x $3\frac{1}{2}$ "] & Fig. 7 (4) | 72 | 44435 | Flange—Inside |
| 34 | 14739 | Gasket | 74 | 44158 | Plunger—Valve |
| 35 | 44544 | Connector—Gov. (Lever & Thumb Handle) | 75 | 33909 | Ass'm.—Grip Handle |
| | 44547 | Connector—Gov. (Grip Handle) | 76 | 33944 | Ass'm.—Trigger |
| 36 | 43372 | Ass'm.—Governor | 77 | 30347 | Pin |
| | | | 78 | 30381 | Plug—Pipe |
| | | | 79 | 53086 | Set—Grip Handle (Includes Fig. 7(4) 26 thru 35, 38 & 71(4) [With $\frac{1}{4}$ "-20 Thd.] |

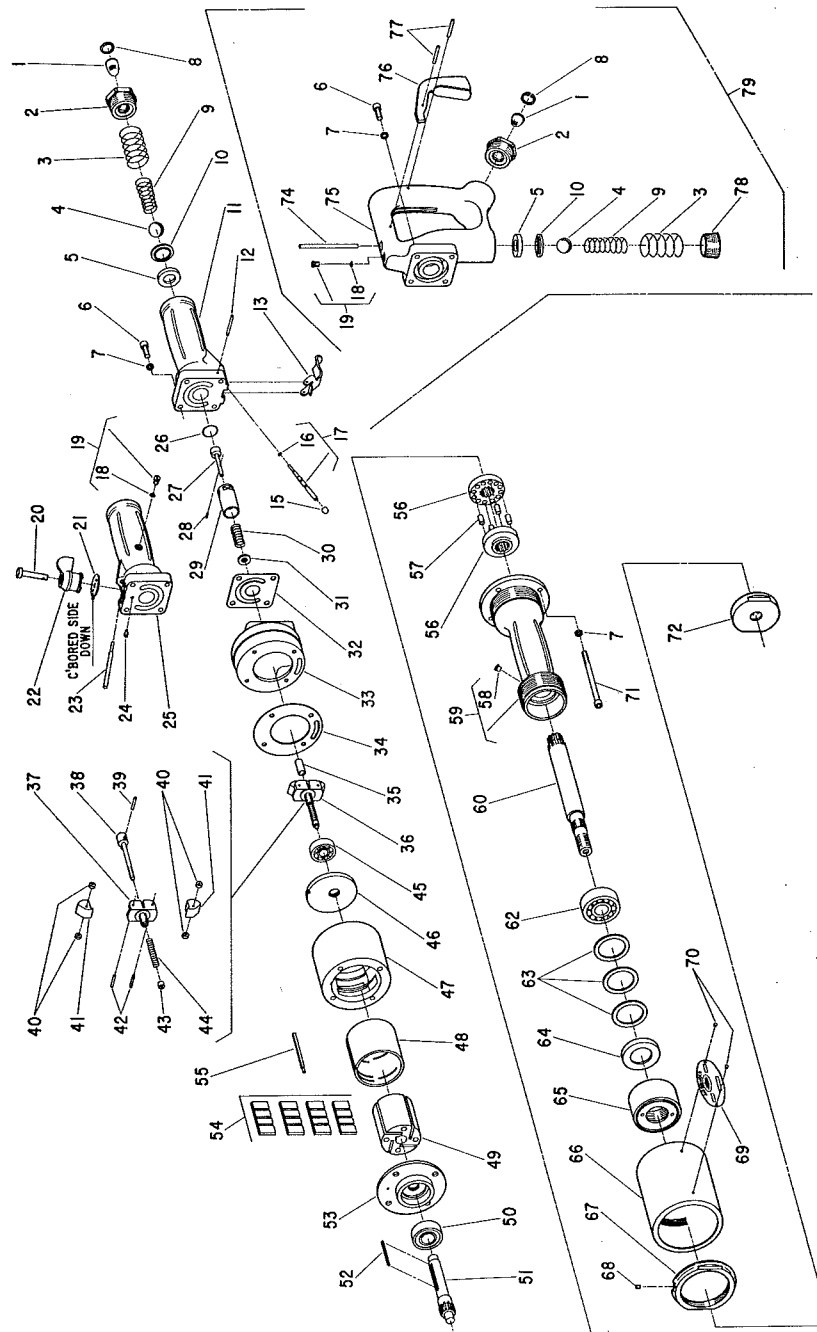
53412 Kit to convert Grinder to Lever Throttle Handle From Thumb Throttle

*Order Quantity As Needed

SIoux TOOLS INC.

SIoux**TOOLS**

Parts List for No. 518
HORIZONTAL AIR CONE WHEEL GRINDER
(SERIAL NO'S. STARTING WITH "B", "C" & "D")



Furnish Catalog, Serial and Model Number When Ordering Parts

This pdf incorporates the following model numbers:

518