



NOTE: Parts are no longer available for this tool.

The manual will continue on the next page.

SIoux**TOOLS**

Parts List for No. 518

HORIZONTAL AIR CONE WHEEL GRINDER

(Up to Ser. No.'s Starting with "B")

Furnish Catalog, Serial and Model Number When Ordering Parts

Fig- ure	Part No.	Name	Fig- ure	Part No.	Name
1	33736	Screen	39	30452	Pin—Roll (Ser. No. 4163 & Up)
2	33843	Ass'm.—Bushing & Retainer	40	44037	Spacer—Gov. Weight (4)*
3	21396	Spring	41	11517	Weight—Gov. (2)*
4	10294	Ball—Steel	42	30362	Pin—Roll (2)*
5	14344	Seat—Throttle Valve	43	13164	Nut—Governor Adjusting
6	08232	Screw— $\frac{1}{4}$ " (4)*	44	21390	Spring—Gov. (Brown)
7	09750	Washer—Lock $\frac{1}{4}$ " (8)*	45	10175	Bearing—Ball
8	21512	Ring—Retaining	46	33734	Plate—Top End
9	21418	Spring—Tapered	47	12755	Housing
10	44011	Retainer—Seat	48	34984	Cylinder
11	33735	Handle—Lever Throttle	49	34985	Rotor
12	44042	Pin	50	10195	Bearing—Ball
13	35009	Lever—Throttle	51	44023	Spindle—Rotor
15	14039	Button—Throttle	52	34992	Key—Rotor
16	14349	Ring—"O"	53	33851	Plate—Front End
17	33848	Ass'm.—Plunger & "O" Ring	54	33837	Vane—Rotor (Set of 4)
18	14369	Ring—"O"	55	34991	Key—Cylinder
19	43553	Assy.—Oiler Screw & "O" Ring	56	44021	Coupling (2)*
	30246	Plug—Pipe	57	14033	Pin—Drive (12)*
20	44141	Pivot	58	30356	Fitting—Grease
21	54377	Plate—Wear	59	53072	Kit—Spindle Housing (Also Replaces Fig. 63)
22	53434	Ass'm.—Lever & Cam Kit (Incl's. Fig. 21)	60	22633	Spindle—Tool
23	44251	Plunger—Valve	62	10126	Bearing—Ball
24	07186	Screw—#10	63	24092	Retainer—Bearing (2)*
25	33994	Handle—Thumb Throttle	66	44026	Cover—Housing
26	14345	Ring—"O"	67	44024	Nut—Cover Lock
27	33994	Valve—Gov. [Lever & Thumb Handle (All)]	68	07002	Screw—Safety (2)*
		[Grip Handle Up To Ser. No. 4162]	69	20366	Plate—Name
	44539	Valve—Gov. [Grip Handle Ser. No. 4163 & Up]	70	09900	Rivet—Steel (2)*
28	30355	Pin	71	08272	Screw— $\frac{1}{4}$ "-28 (4)*
29	13167	Body—Governor Valve	72	44435	Flange—Inside
30	21385	Spring—Valve	74	44158	Plunger—Valve
31	35010	Retainer—Spring	75	33909	Ass'm.—Grip Handle
32	14799	Gasket (Lever & Thumb Handle)	76	33944	Ass'm.—Trigger
	14745	Gasket (Grip Handle)	77	30347	Pin
33	53694	Housing—Gov. (Lever & Thb. Handle)	78	30381	Plug—Pipe
		[Incl's. Fig. 7 (4) & 71 (4) $\frac{1}{4}$ "-20 Thd.]	79	53086	Set—Grip Handle (Incl's. Fig. 7 (4), 26 thru 35, 38 & 71 (4) $\frac{1}{4}$ "-20 Thd.)
	53696	Housing—Gov. (Grip Handle)	80	33765	Set—Gov. Assy. (Lever & Thumb Handle)
		[Incl's. Fig. 7 (4) & 71 (4) $\frac{1}{4}$ "-20 Thd.]			(Incl. Fig. 35 & 36) [Up to Ser. No. 4162]
34	14739	Gasket		33953	Set—Gov. Assy. (Grip Handle) (Incl. Fig. 27, 35 & 36) [Up to Ser. No. 4162]
35	44544	Connector—Gov. (Lever & Thumb Handle)	81	53188	Set—Gov. Spindle Conversion (Grip Handle)
		(Ser. No. 4163 & Up)			(Incl. Fig. 27, 35 & 38) [Up to Ser. No. 4162]
	44547	Connector—Gov. (Grip Handle) (Ser. No. 4163 & Up)	82	53189	Set—Gov. Spindle Conversion (Lever & Thumb Handle) (Incl. Fig. 35 & 38) [Up to Ser. No. 4162]
36	43372	Ass'm.—Governor (Ser. No. 4163 & Up)			
37	34996	Body—Governor			
38	43273	Spindle—Governor (Ser. No. 4163 & Up)			

53412 Kit to convert Grinder to Lever Throttle Handle from Thumb Throttle

*Order Quantity As Needed

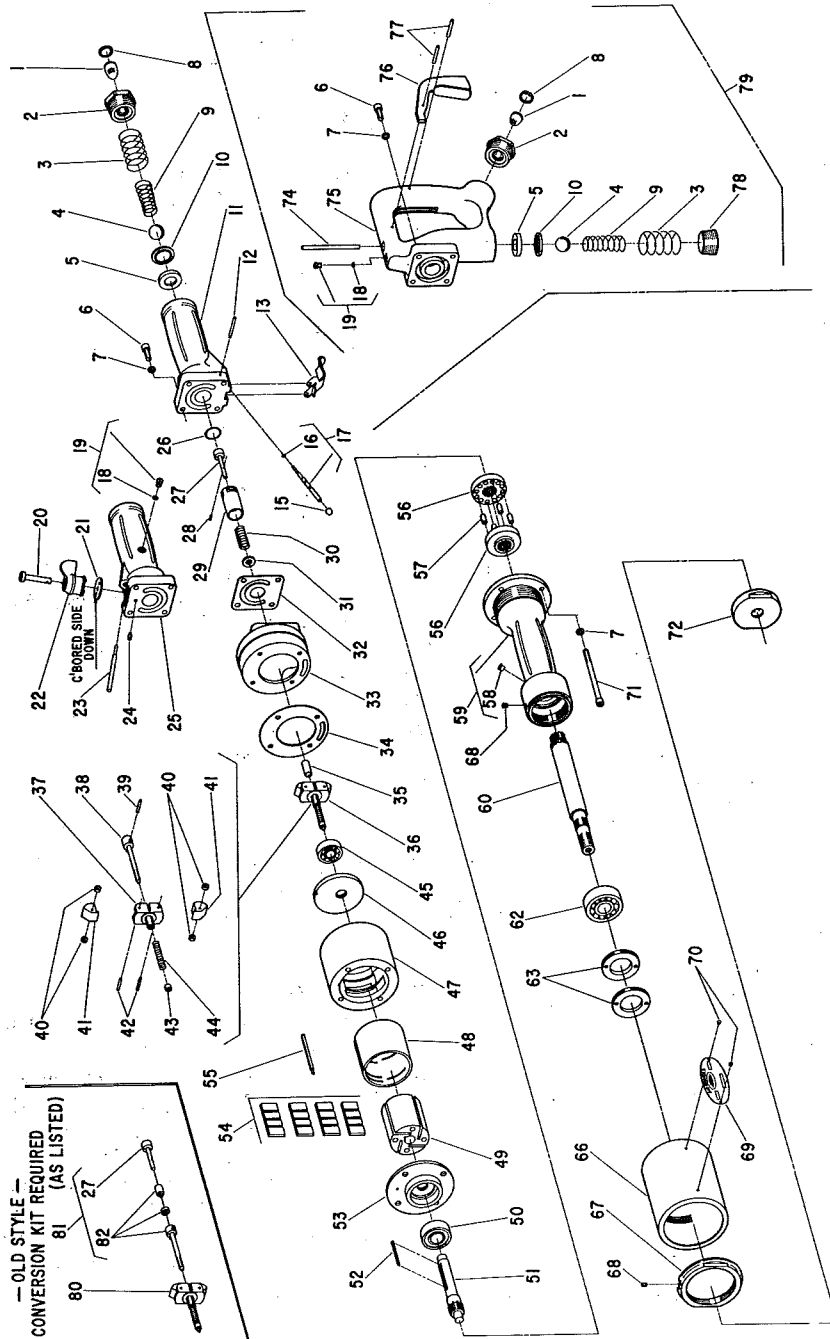
SIoux TOOLS INC.

SIoux



TOOLS

Parts List for No. 518 HORIZONTAL AIR CONE WHEEL GRINDER (Up to Ser. No's. Starting with "B")



Furnish Catalog, Serial and Model Number When Ordering Parts

This pdf incorporates the following model numbers:

518