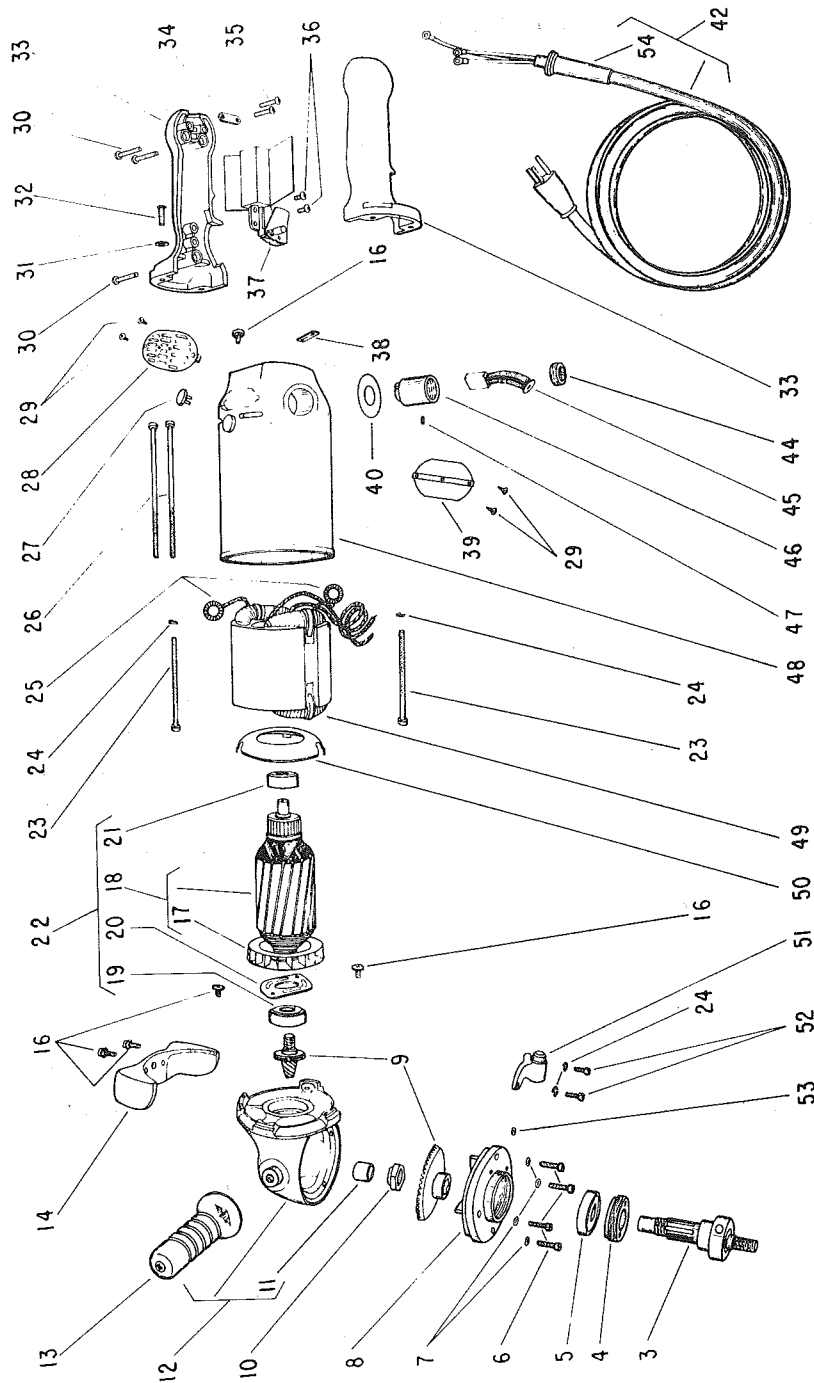




NOTE: Parts are no longer available for this tool.

The manual will continue on the next page.

Parts List for No. 1209 Sioux Electric Polisher (SERIAL B100 & UP)



Furnish Catalog and Serial Number When Ordering Parts

SIoux**TOOLS**

Parts List for No. 1209

Sioux Electric Polisher

(SERIAL B100 & UP)

Furnish Catalog, Serial and Model Number When Ordering Parts

Fig- ure	Part No.	Name	Fig- ure	Part No.	Name
3	22930	Spindle—Tool	31	35234	Washer (4)
4	23017	Seal—Oil	32	07223	Screw—#10 (4)
5	10141	Bearing—Ball	33	43887	Ass'm.—Handle Complete
6	07114	Screw—#10 (4)	34	35233	Strap
7	14613	Washer—Fiber (4)	35	06590	Screw—#8 (2)
8	12203	Support—Bearing	36	06690	Screw—#8 (2)
9	19720	Gears—Matched Set	37	18204	Switch
10	09693	Nut—Elastic Stop	38	14698	Retainer—Wire
11	10023	Bearing—Needle	39	53346	Cover—Closed Inspection Hole
12	33020	Case—Gear	40	14602	Washer—Insulating (2)
13	23006	Handle—Side	41	18756	Adapter
14	35270	Director—Air	42	18416	Ass'm.—Cord & Terminals
16	07204	Screw—#10 (5)		18417	Ass'm.—Cord & Terminals (30 foot)
17	21569	Fan		53535	Ass'y.—Handle, Switch & Cord
18	16603	Armature With Fan	44	18101	Cap—Brush Holder
19	10127	Bearing—Ball	45	18004	Brush—Motor (2)
20	25027	Plate—Bearing Lock	46	18051	Holder—Brush (2)
21	10106	Bearing—Ball	47	07000	Screw—#10 (2)
22	16819	Armature With Fan & Bearing	48	12341	Housing
23	07136	Screw—#10 (2)	49	17103	Field
24	09724	Washer—Lock #10 (4)	50	25044	Plate—Baffle
25	21329	Spring—Brush Holder (2)	51	23161	Lock—Tool Spindle
26	07127	Screw—#10 (4)	52	07110	Screw—#10 (2)
27	34976	Button—Wear	53	06404	Screw—#8
28	23091	Cover—Open Inspection Hole	54	04219	Relief—Strain
29	06093	Screw—#4 (4)		20362	Plate—Name
30	06655	Screw—#8 (3)		09954	Screw—Drive (2)
				24021	Slinger—Grease

SIoux TOOLS INC.
SIoux CITY, IOWA, U.S.A. 51102

This pdf incorporates the following model numbers:

1209