



NOTE: Parts are no longer available for this tool.

The manual will continue on the next page.



Parts List for No. 1287 Sioux 7-Inch High Speed Air Sander

Furnish Catalog, Serial and Model Number When Ordering Parts

Fig- ure	Part No.	Name	Fig- ure	Part No.	Name
1	07114	Screw (+)	*46	14323	Ring—"O" (Up To Ser. No's. Starting With "B")
2	09724	Washer—Lock (8)	47	44389	Stop
3	23189	Lock—Tool Spindle	48	44390	Bushing—Inner
4	63130	Spindle—Tool (Incl's. Fig's 3) (Up To Ser. "D")	49	30375	Fitting—Grease
	22945	Spindle—Tool (Ser. No's. Starting With "D")	*50	14755	Gasket—Inlet
*5	23017	Seal—Oil	51	44391	Sleeve—Valve
6	10244	Bearing—Ball	52	43145	Assy.—Crank & Rod (Up To Ser. No. 1399) (Incl's. Fig. 45 & 53)
7	19719	Assy.—Rotor Spindle & Gear (Incl's. Fig. 27)		44434	Rod—Valve (Ser. No. 1400 & Up)
8	43227	Case—Gear	53	35119	Washer
9	10023	Bearing—Needle	*54	14372	Valve
10	30356	Fitting—Grease	55	21413	Spring—Valve [Lever Handle (All)] [Thumb Throttle (Up To Ser. No's. Starting With "B")]
11	44421	Washer—Clamp		41285	Spring—Valve [Thumb Throttle (Ser No's. Starting With "B")]
12	08650	Screw	56	33993	Screen—Air
13	35114	Rest—Tool	57	09712	Washer—Lock (+)
14	11553	Supprt—Bearing	58	06573	Screw (+)
15	06404	Screw—Set	59	06325	Screw (2)
16	44380	Spacer (Up to Ser. No's. starting with "C")	60	09704	Washer—Lock (2)
	54439	Spacer (Ser. No's. starting with "C")	61	14750	Retainer—Screw (2)
17	09693	Nut—Elastic Stop	†62	43232	Assy.—Detent Screw & "O" Ring
18	23006	Handle—Side	*†63	14291	Ring—"O"
19	20357	Plate—Name	64	21432	Spring—Detent (Up To Ser. No's. Starting With "B")
20	06000	Screw (2)	65	10902	Ball—Steel (Up To Ser. No's. Starting With "B")
21	44220	Rotor	66	34694	Pin—Trigger
22	10520	End Plate—Rear	67	53443	Trigger Conversion Kit (Momentary Lock) (Includes Fig. 55, 67 & 68) Up To Ser. No's. Starting With "B"
23	10241	Bearing—Ball		53440	Trigger (Ser. No's. Starting With "B")
24	35067	Washer—Wave	68	35118	Washer (Up To Ser. No's. Starting With "B")
25	43143	Assy.—Gov. (Up To Ser. No. 13519) (Incl's. Fig. 43)		35334	Plate—Wear (Ser. No's. Starting With "B")
	43672	Assy.—Gov. (Ser. No. 13520 & Up)	69	44378	Bushing—Outer
26	44219	Key—Rotor	70	07129	Screw (+)
27	19719	Assy.—Rotor Spindle & Gear (Incl's. Fig. 7)	*71	14281	Ring—"O"
28	10243	Bearing—Ball	72	44388	Cap—Inlet
29	10531	End Plate—Front	73	35124	Lever
30	43022	Assy.—Cylinder & Pin	74	43323	Assy.—Plunger Guide & Bell Crank
31	12276	Housing (Front Exhaust)	75	34819	Pin
	12291	Housing (Rear Exhaust)	*76	14309	Ring—"O"
*32	33997	Vane—Rotor (Set of 4)	77	35123	Crank—Bell
33	44379	Spacer—Gov. Weight (+)	78	30459	Pin
34	13183	Nut—Gov. Adjusting	79	30458	Pin
35	21411	Spring—Gov. (Red)	80	12298	Handle—Lever Throttle
36	30336	Pin—Roll (2)	81	30219	Pin—Roll
37	35069	Weight—Governor (+)	82	44476	Rod—Valve
38	43753	Kit—Gov. Conversion (Up To Ser. No. 13519) (Incl's. Fig. 43)	83	30273	Pin—Roll
	43666	Assy.—Brg. Support & Spindle (Ser. No. 13520 & Up)	84	14275	Protector—Rubber
39	44222	Frame—Governor	85	04207	Cover—Hose (Front Exhaust)
40	14751	Gasket (Front Exhaust)	86	14063	Cover—Handle (Front Exhaust)
*41	14756	Gasket (Rear Exhaust)	87	1361	Cover—Handle (Rear Exhaust)
	44245	Retainer—Gov. Valve	88	14291	Ring—"O" (Used Up To Ser. No's. Starting With "B")
*42	14312	Ring—"O" (2)	89	40022	Nipple—Pipe
43	43753	Kit—Gov. Conversion (Up To Ser. No. 13519) (Incl's. Fig. 38)	53438		Assy.—Lever Handle Kit (Includes Figs. 49 & 50, 73 thru 83)
	43664	Valve—Gov. (Ser. No. 11520 & Up)			
44	43228	Handle—Thumb Throttle (Incl's. Fig. 48, 49 & 69)			
45	43145	Assy.—Crank & Rod (Up To Ser. No. 1399) (Incl's. Fig. 52 & 53)			
	43253	Assy.—Crank & Pin (Ser. No. 1400 & Up)			

*These parts included in Tune-Up Set No. 43909

†Used on all units equipped with thumb throttle up to & including some early models serial no's. starting with "B".

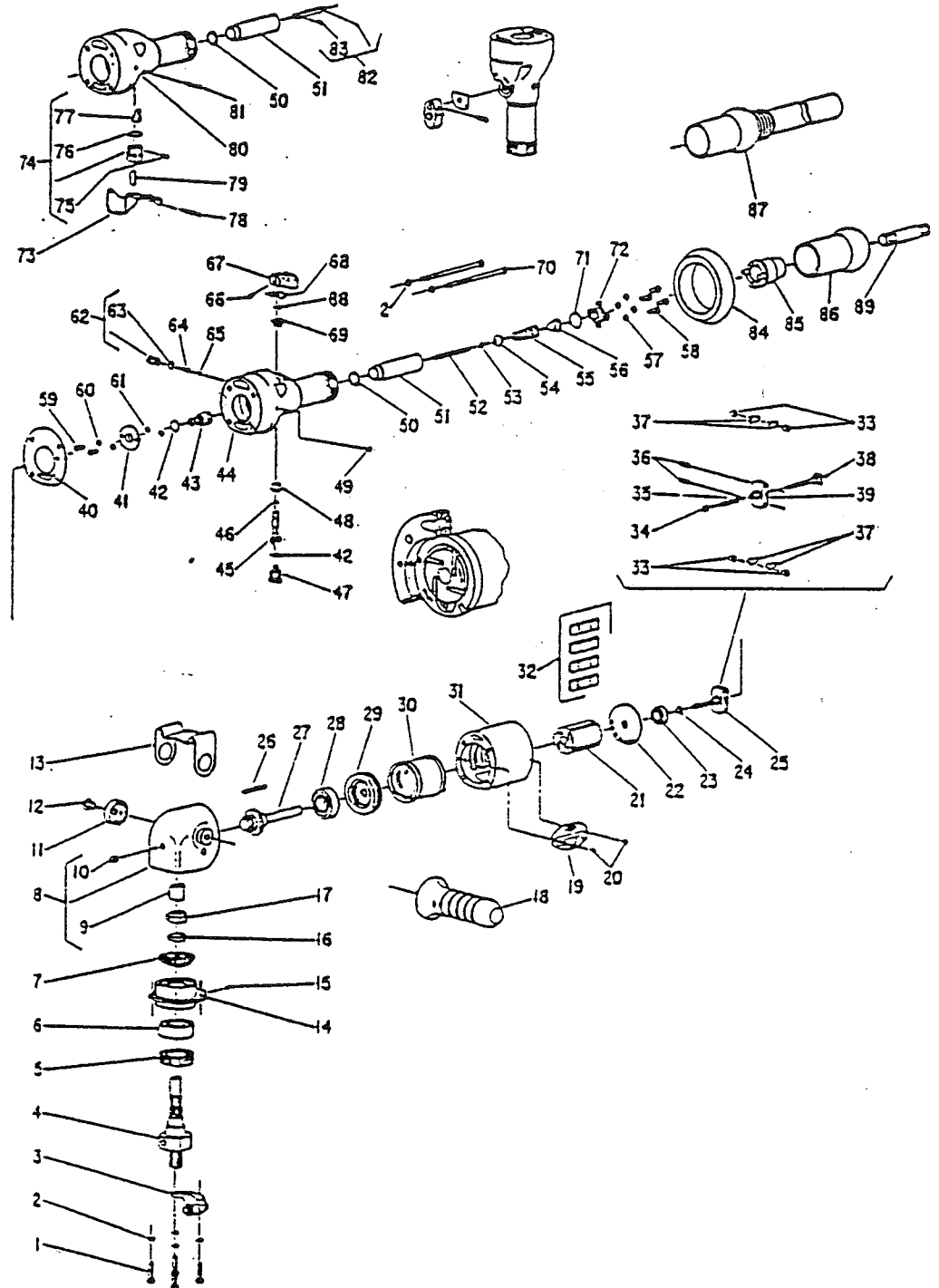
SIoux TOOLS INC.
SIoux CITY, IOWA, U.S.A. 51102

SIoux



TOOLS

Parts List for No. 1287 Sioux 7-Inch High Speed Air Sander



Furnish Catalog, Serial and Model Number When Ordering Parts

This pdf incorporates the following model numbers:

1287