



NOTE: Parts are no longer available for this tool.

The manual will continue on the next page.

SIoux**TOOLS**

Parts List for No. O-2550

SIoux TAPPER

(Serial H & Up)

Furnish Catalog, Serial and Model Number When Ordering Parts

Fig- ure	Part No.	Name	Fig- ure	Part No.	Name
1	21094	Chuck—Tap	24	10230	Bearing—Ball
2	21095	Collet—Tap Chuck	25	21491	Ring—Retainer
3	44348	Case—Gear & Lock Ring	26	44426	Spool—Non-Locking Valve
4	44857	Ring—Lock	27	21427	Spring
5	43216	Ass'y.—2nd Planetary Gear	28	06502	Screw—Retaining
6	10228	Bearing—Ball	29	30322	Pin—Groove
7	25439	Washer (4)	30	43628	Ass'y.—Handle (Incl. Figs. 35, 51, 52 & 53)
8	19314	Ass'y.—Gear & Bearings (4)	35	43553	Ass'y.—Oiler Screw & “O” Ring
9	10040	Bearing—Needle (4)	36	14369	Ring—“O”
10	30062	Pin (4)	42	53245	Ass'y.—Adjustable Throttle Valve
11	22620	Spindle—Tapper	43	53182	Ass'y.—Adjustable Trigger
12	10203	Bearing—Ball (3)	44	21542	Ring—Retainer
13	19153	Ass'm.—Ring Gear & Retainer	45	21401	Spring
14	21510	Ring—Retainer	46	44754	Bushing
15	33888	Ass'y.—1st Planetary Gear	47	53258	Ass'y.—Valve Body & “O” Ring
16	34928	Carrier—Gear	48	14312	Ring—“O” (2)
17	10220	Bearing—Ball	49	53246	Ass'y.—Plunger Valve
18	33741	Ass'y.—Lower End Plate	50	14325	Valve
19	14342	Ring—“O”	51	30463	Screen
20	44511	Rotor	52	21541	Ring—Retainer
21	33738	Ass'y.—Cylinder & Pins	53	53326	Ass'y.—Silencer
22	33737	Vane—Rotor (Set of 4)	54	30375	Fitting—Grease
23	13161	End Plate—Upper	55	54254	Case—Gear

SIoux TOOLS INC.
SIoux CITY, IOWA, U.S.A. 51102

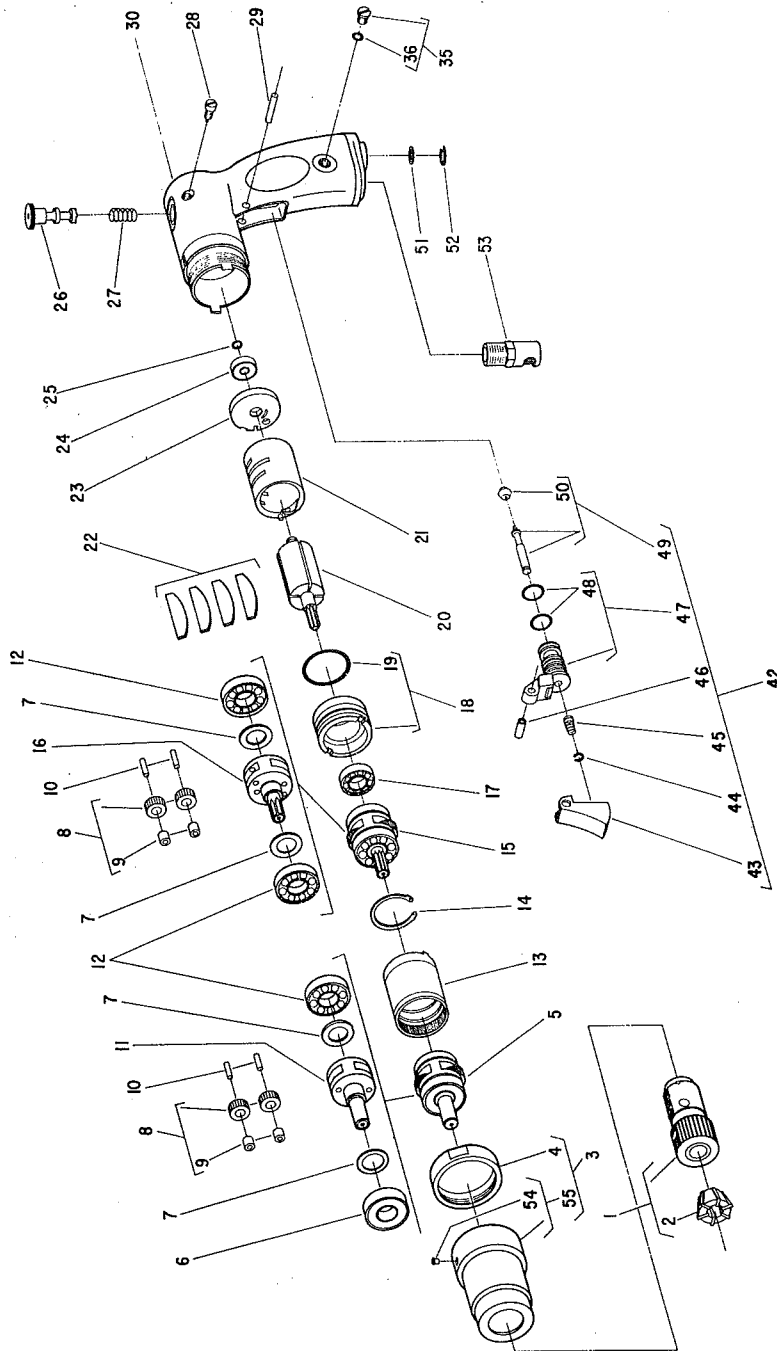
SIoux



TOOLS

Parts List for No. O-2550 SIoux TAPPER

(Serial H & Up)



Furnish Catalog, Serial and Model Number When Ordering Parts

This pdf incorporates the following model numbers:

O-25550