



NOTE: Parts are no longer available for this tool.

The manual will continue on the next page.

SIoux**TOOLS****Parts List for No. O-2550****SIoux TAPPER**

(Serial G100 & Up)

Furnish Catalog, Serial and Model Number When Ordering Parts

Fig- ure	Part No.	Name	Fig- ure	Part No.	Name
1	2404	Chuck—Tap	23	13161	End Plate—Upper
2	21095	Collet—Tap Chuck	24	10230	Bearing—Ball
3	44348	Case—Gear	25	21491	Ring—Retainer
4	21505	Ring—Lock	26	44426	Spool—Non-Locking Valve
5	43216	Ass'y.—2nd Planetary Gear	27	21427	Spring
6	10228	Bearing—Ball	28	06502	Screw—Retaining
7	25439	Washer (4)	29	30322	Pin—Groove
8	19314	Ass'y.—Gear & Bearings (4)	30	43628	Ass'y.—Handle (Incl. Figs. 35, 51, 52 & 53)
9	10040	Bearing—Needle (4)	35	43553	Ass'y.—Oiler Screw & “O” Ring
10	30062	Pin (4)	36	14369	Ring—“O”
11	22620	Spindle—Tapper	42	53245	Ass'y.—Adjustable Throttle Valve
12	10203	Bearing—Ball (3)	43	53182	Ass'y.—Adjustable Trigger
13	19153	Gear—Ring	44	21542	Ring—Retainer
14	21510	Ring—Retainer	45	21401	Spring
15	33888	Ass'y.—1st Planetary Gear	46	44754	Bushing
16	34928	Carrier—Gear	47	53258	Ass'y.—Valve Body & “O” Ring
17	10220	Bearing—Ball	48	14312	Ring—“O” (2)
18	33741	Ass'y.—Lower End Plate	49	53246	Ass'y.—Plunger Valve
19	14342	Ring—“O”	50	14325	Valve
20	44511	Rotor	51	30463	Screen
21	33738	Ass'y.—Cylinder & Pins	52	21541	Ring—Retainer
22	33737	Vane—Rotor (Set of 4)	53	53326	Ass'y.—Silencer

SIoux TOOLS INC.
SIoux CITY, IOWA, U.S.A. 51102

SIoux

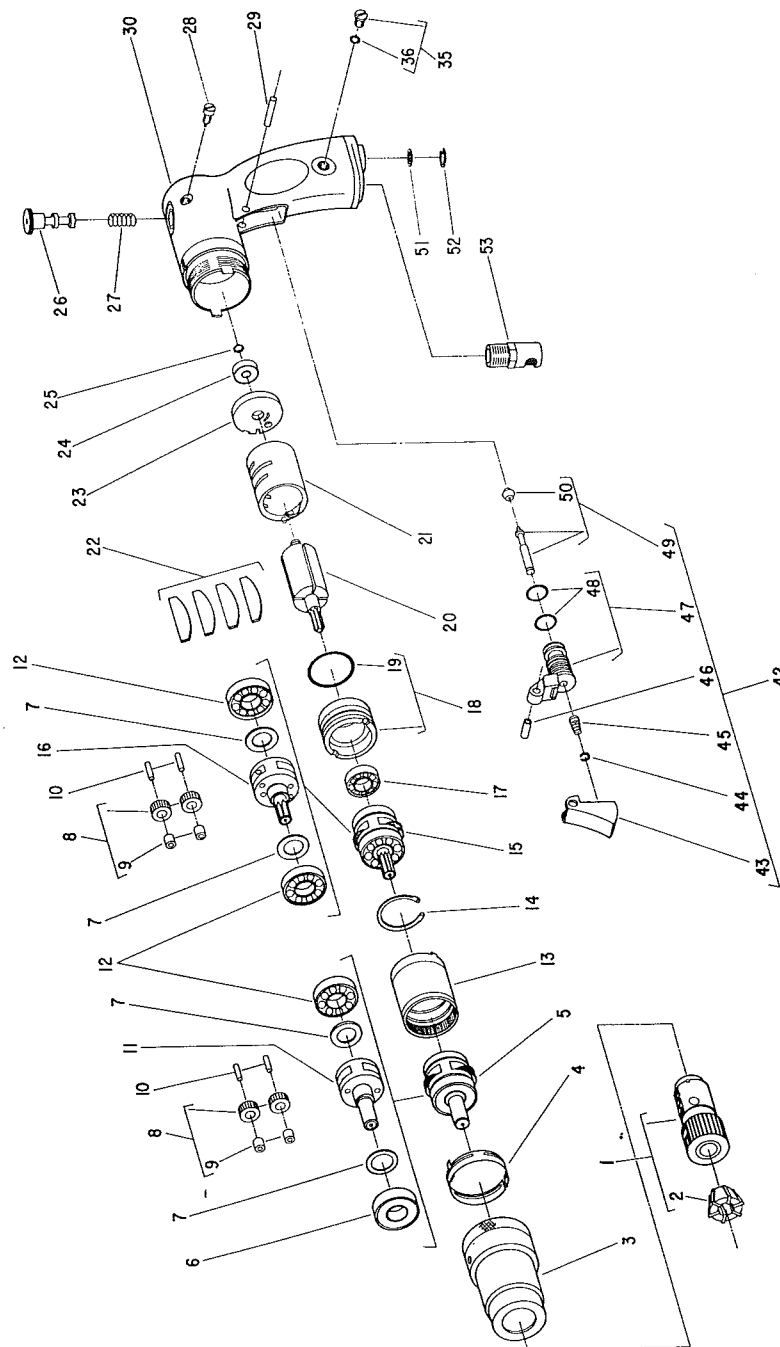


TOOLS

Parts List for No. O-2550

SIoux TAPPER

(Serial G100 & Up)



Furnish Catalog and Serial Number When Ordering Parts

This pdf incorporates the following model numbers:

O-25550