



NOTE: Parts are no longer available for this tool.

The manual will continue on the next page.

SIoux**TOOLS**

Parts List for No. O-2550

SIoux TAPPER

(Serial E100 & Up)

Furnish Catalog, Serial and Model Number When Ordering Parts

Fig ure	Part No.	Name	Fig ure	Part No.	Name
1	2404	Chuck—Tap	27	21427	Spring
2	21095	Collet—Tap Chuck	28	06502	Screw—Retaining
3	44348	Case—Gear	29	30322	Pin—Groove
4	21505	Ring—Lock	30	43628	Ass'y.—Handle (Incl. Figs. 31 thru 40)
5	43216	Ass'y.—2nd Planetary Gear	31	06650	Screw
6	10228	Bearing—Ball	32	53191	Ass'y.—Oiler Screw & Insert
7	25439	Washer (4)	33	53255	Ass'y.—Insert & “O” Ring
8	19314	Ass'y.—Gear & Bearings (4)	34	04229	Ring—“O”
9	10040	Bearing—Needle (4)	35	43553	Ass'y.—Oiler Screw & “O” Ring
10	30062	Pin (4)	36	14369	Ring—“O”
11	22620	Spindle—Tapper	37	14290	Ring—“O”
12	10203	Bearing—Ball (3)	38	04222	Ring—“O”
13	19153	Gear—Ring	39	21768	Ring—Retainer
14	21510	Ring—Retainer	40	53148	Ass'y.—Deflecting Silencer
15	33888	Ass'y.—1st Planetary Gear	41	14281	Ring—“O”
16	34928	Carrier—Gear	42	53245	Ass'y.—Adjustable Throttle Valve
17	10220	Bearing—Ball	43	53182	Ass'y.—Adjustable Trigger
18	33741	Ass'y.—Lower End Plate	44	21542	Ring—Retainer
19	14342	Ring—“O”	45	21401	Spring
20	44511	Rotor	46	44754	Bushing
21	33738	Ass'y.—Cylinder & Pins	47	53258	Ass'y.—Valve Body & “O” Ring
22	33737	Vane—Rotor (Set of 4)	48	14312	Ring—“O” (2)
23	13161	End Plate—Upper	49	53246	Ass'y.—Plunger Valve
24	10230	Bearing—Ball	50	14325	Valve
25	21491	Ring—Retainer			
26	44426	Spool—Non-Locking Valve			

SIoux TOOLS INC.
SIoux CITY, IOWA, U.S.A. 51102

SIoux

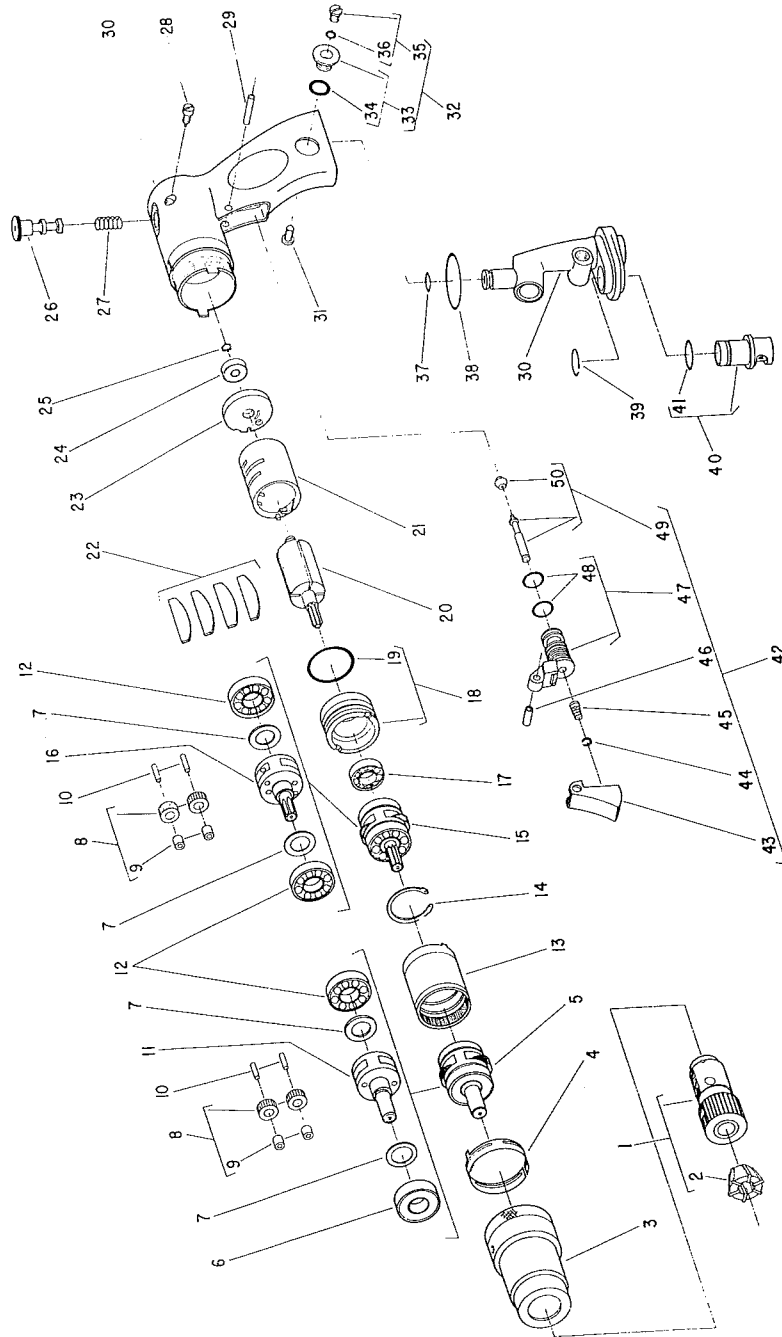


TOOLS

Parts List for No. O-2550

SIoux TAPPER

(Serial E100 & Up)



Furnish Catalog, Serial and Model Number When Ordering Parts

This pdf incorporates the following model numbers:

O-25550