



NOTE: Parts are no longer available for this tool.

The manual will continue on the next page.

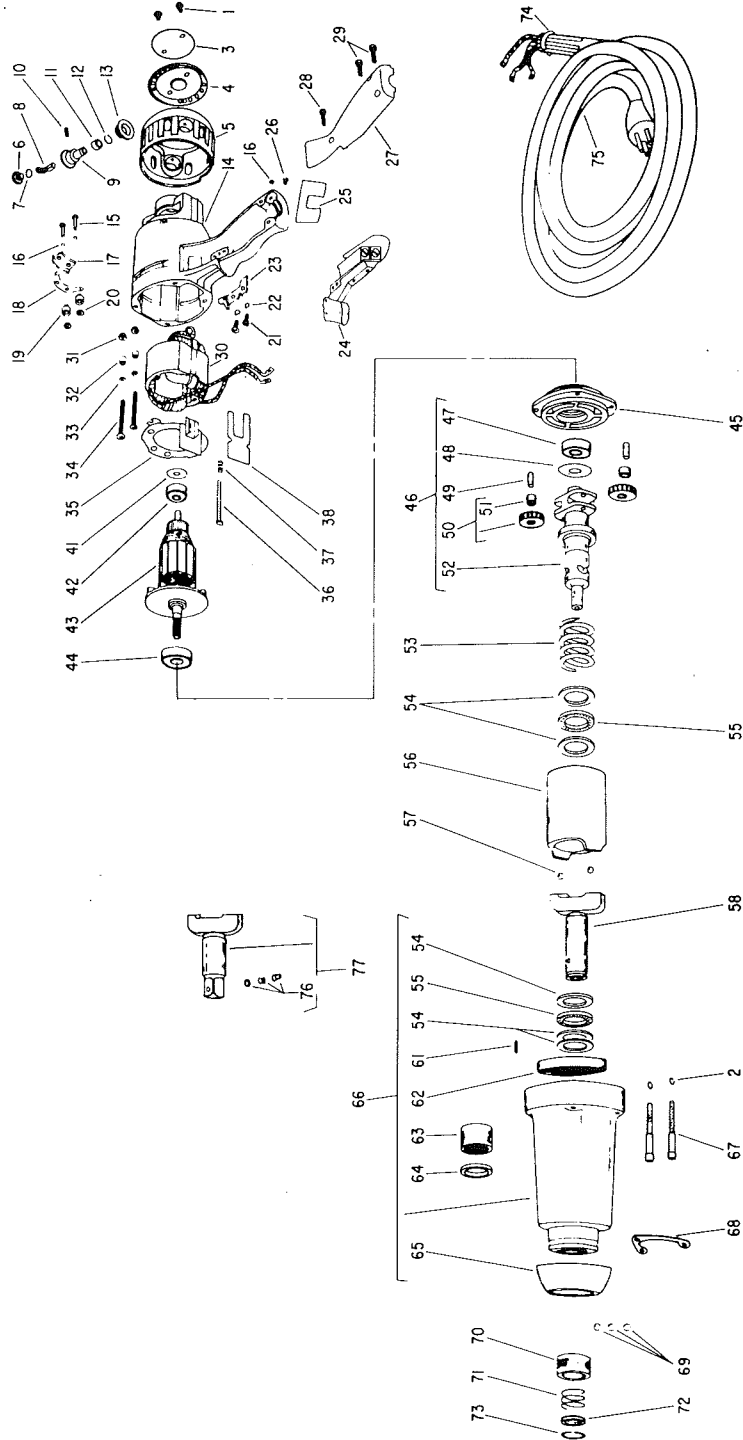
SIoux**TOOLS****330 (115 V.), 330J (230 V.) 1/2" Sq. Electric Impact Wrench****335 (115 V.), 335J (230 V.) 5/8" Sq. Electric Impact Wrench****336 (115 V.), 336J (230 V.) 7/16" Hex Quick Change Electric Impact Wrench****338 (115 V.), 338J (230 V.) 5/8" Hex Quick Change Electric Impact Wrench****Serial No. "G"****Furnish Catalog Number When Ordering Parts**

Fig- ure	Part No.	Name	Fig- ure	Part No.	Name
1	07210	Screw—Phil. Rd. Hd. Sems #10-24 x 1/2" (2)*	50	23824	Assy.—Gear & Bearing (2)*
2	09724	Washer—Lock #10 (4)*	51	10019	Bearing—Needle (2)*
3	20434	Plate—Name (330)	52	54149	Carrier—Pinion
	20435	Plate—Name (335)	53	41256	Spring
	20433	Plate—Name (336)	54	10055	Thrust—Race (5)* (2 Used in Pinion Carrier Assy., 3 Used in 330 Hammer Case)
	65327	Plate—Name (338)		10053	Thrust—Race (3)* (3 Used in 335, 336 Hammer Case Only)
4	25691	Retainer—Cap		10035	Thrust—Race (3)* (3 Used in 338 Hammer Case Only)
5	12537	Cap	55	10059	Bearing—Needle Thrust (2)* (1 Used in Pinion Carrier Assy.; 1 Used in 330 Hammer Case)
6	18100	Cap—Brush Holder (2)*		10052	Bearing—Needle Thrust (1 Used in 335, 336 Hammer Case Only)
7	14280	Washer (2)*		10321	Bearing—Needle Thrust (1 Used in 338 Hammer Case Only)
8	18022	Brush (Set of 2)	56	54150	Hammer
9	18079	Assy.—Brush Holder (Incl. Figs. 11 & 12) (2)*	57	10299	Ball—Steel (2)*
10	06406	Screw—Set #8-32 x 1/4" (2)*	58	54483	Anvil (336)
11	13116	Roller—Reversing Contact (2)*		64205	Anvil (338)
12	41312	Ring—Retainer (2)*	61	30229	Pin—Roll
13	14841	Insulator (2)*	62	19111	Gear—Internal
14	53720	Assy.—Housing (Incl. Figs. 27, 28 & 29)	63	10060	Bearing—Roller (330)
15	06237	Screw—Phil Rd. Hd. #6-32 x 3/4" (4)*		10051	Bearing—Roller (335, 336)
16	09704	Washer—Lock #6 (5)*		10071	Bearing—Roller (338)
17	14839	Insulator (2)*	64	30258	Seal—Oil (330)
18	13117	Clip—Reversing Contact (2)*		30661	Seal—Oil (335, 336)
19	14840	Insulator—Terminal (4)*		30768	Seal—Oil (338)
20	09440	Nut—Hex #6-32 (4)*	65	14299	Protector—Rubber
21	06669	Screw—Phil. Rd. Hd. Self Tap #8-32x1/2" (2)*	66	53635	Assy.—Hammer Case (330)
22	09712	Washer—Lock #8 (2)*		53662	Assy.—Hammer Case (335, 336)
23	23801	Assy.—Lever		65328	Assy.—Hammer Case (338)
24	18193	Switch	67	07088	Screw—Hex Soc. Cap #10-24 x 1-1/2" (4)*
25	14700	Insulation—Switch	68	25998	Ball (336)
26	06224	Screw—Phil. Rd. Hd. Brass #6-32x3/16"	69	10324	Ball—Retainer (3)* (336)
27	12534	Cover—Handle		10299	Ball—Retainer (3)* (338)
28	06589	Screw—Phil. Hd. #8-32x3/4"	70	34455	Retainer—Ball (336)
29	06577	Screw—Phil. Fil. Hd. #8-32x5/8" (2)*		44320	Retainer—Ball (338)
30	28962	Field—Motor (115 V.)	71	21414	Spring (336)
	28962J	Field—Motor (230 V.)		21426	Spring (338)
31	09458	Nut—Elastic Stop #8-32 (2)*	72	34456	Ring—Guide (336)
32	54564	Spacer (2)*		44319	Ring—Guide (338)
34	06447	Screw—Flat Hd. #8-32x2-5/8" (2)*	73	21487	Ring—Retainer (336)
35	53762	Assy.—Baffle		21527	Ring—Retainer (338)
36	34245	Plunger	74	21808	Ring—Clinch
37	21206	Spring	75	18592	Cord—Electric with Terminals (115 V.) (Incl. Fig. 74)
38	14712	Baffle—Air Control		18592J	Cord—Electric with Terminals (230 V.) (Incl. Fig. 74)
41	25687	Washer	76	43890	Assy.—Socket Retainer (330)
42	10928	Bearing—Ball		43891	Assy.—Socket Retainer (335)
43	28961	Armature with Fan (115 V.)	77	54366	Assy.—Anvil (330)
	28961J	Armature with Fan (230 V.)		54357	Assy.—Anvil (335)
	16865	Armature, Fan & Bearing (115 V.) (Incl. Figs. 42 & 44)			
	16865J	Armature, Fan & Bearing (230 V.) (Incl. Figs. 42 & 44)			
44	10210	Bearing—Ball			
45	12536A	Cover—Gear Case			
46	53636	Assy.—Pinion Carrier			
47	10145	Bearing—Ball			
48	25776	Washer			
49	34121A	Pin (2)*			

**SIoux
TOOLS INC.**

*Order Quantity As Needed

Parts List For
330 (115 V.), 330J (230 V.) 1/2" Sq. Electric Impact Wrench
335 (115 V.), 335J (230 V.) 5/8" Sq. Electric Impact Wrench
336 (115 V.), 336J (230 V.) 7/16" Hex Quick Change Electric Impact Wrench
338 (115 V.), 338J (230 V.) 5/8" Hex Quick Change Electric Impact Wrench
Serial No. "G"



Furnish Catalog Number When Ordering Parts

This pdf incorporates the following model numbers:

330, 330J, 335, 335J, 336, 336J, 338, 338J