



NOTE: Parts are no longer available for this tool.

The manual will continue on the next page.

SIoux**TOOLS**

330 (115 V.), 330J (230 V.) 1/2" Sq. Electric Impact Wrench
335 (115 V.), 335J (230 V.) 5/8" Sq. Electric Impact Wrench
336 (115 V.), 336J (230 V.) 7/16" Hex Quick Change Electric Impact Wrench
 (Serial No.'s Starting With "E" and "F")

Furnish Catalog and Serial Number When Ordering Parts

Fig- ure	Part No.	Name	Fig- ure	Part No.	Name	
1	07210	Screw—Phil. Rd. Hd. Sems #10-24 x 1/2" (2)*	44	10210	Bearing—Ball	
2	09724	Washer—Lock #10 (4)*	45	12536A	Cover—Gear Case	
3	20434	Plate—Name (330)	46	53636	Assy.—Pinion Carrier	
	20435	Plate—Name (335)	47	10145	Bearing—Ball	
	20433	Plate—Name (336)	48	25776	Washer	
4	25691	Retainer—Cap	49	34121A	Pin (2)*	
5	12537	Cap	50	23824	Assy.—Gear & Bearing (2)*	
6	18100	Cap—Brush Holder (2)*	51	10019	Bearing—Needle (2)*	
7	14280	Washer (2)*	52	54149	Carrier—Pinion	
8	18022	Brush (2)* (330, 335)	53	41256	Spring	
9	18079	Assy.—Brush Holder (Incl. Figs. 11 & 12) (2)*	54	10055	Thrust—Race (5)* (2 Used in Pinion Carrier Assy., 3 Used in 330 Hammer Case)	
10	06406	Screw—Set #8-32 x 1/4" (2)*		10053	Thrust—Race (3)* (3 Used in 335, 336 Hammer Case Only)	
11	13116	Roller—Reversing Contact (2)*		55	10059	Bearing—Needle Thrust (2)* (1 Used in Pinion Carrier Assy., 1 Used in 330 Hammer Case)
12	21478	Ring—Retainer (2)* Up To Serial "F"		10052	Bearing—Needle Thrust (1 Used in 335, 336 Hammer Case Only)	
	41312	Ring—Retainer (2)* Serial "F"		56	54150	Hammer
13	14841	Insulator (2)*	57	10299	Ball—Steel (2)*	
14	53720	Assy.—Housing (Incl. Figs. 27, 28 & 29)	58	54483	Anvil (336)	
15	06237	Screw—Phil Rd. Hd. #6-32 x 3/4" (4)*	59	30229	Pin—Roll	
16	09704	Washer—Lock #6 (5)*	62	19111	Gear—Internal	
17	14839	Insulator (2)*	63	10060	Bearing—Roller (330)	
18	13117	Clip—Reversing Contact (2)*		10051	Bearing—Roller (335, 336)	
19	14840	Insulator—Terminal (4)*	64	30258	Seal—Oil (330)	
20	09440	Nut—Hex #6-32 (4)*		30661	Seal—Oil (335, 336)	
21	06669	Screw—Phil. Rd. Hd. Self Tap #8-32 x 1/2" (2)*	65	14299	Protector—Rubber	
22	09712	Washer—Lock #8 (2)*	66	53635	Assy.—Hammer Case (330)	
23	23801	Assy.—Lever		53662	Assy.—Hammer Case (335, 336)	
24	18193	Switch	67	07088	Screw—Hex Soc. Cap #10-24 x 1-1/2" (4)*	
25	14700	Insulation—Switch	68	25998	Ball (336)	
26	06224	Screw—Phil. Rd. Hd. Brass #6-32 x 3/16"	69	10324	Ball—Retainer (3)* (336)	
27	12534	Cover—Handle	70	34455	Retainer—Ball (336)	
28	06589	Screw—Phil. Hd. #8-32 x 3/4"	71	21414	Spring (336)	
29	06577	Screw—Phil. Fil. Hd. #8-32 x 5/8" (2)*	72	34456	Ring—Guide (336)	
30	17133	Field—Motor (115 V.)	73	21487	Ring—Retainer (336)	
	17133J	Field—Motor (230 V.)	74	21808	Ring—Clinch	
31	09458	Nut—Elastic Stop #8-32 (2)*	75	18592	Cord—Electric with Terminals (115 V.) (Incl. Fig. 74)	
32	54564	Spacer (2)*		18592J	Cord—Electric with Terminals (230 V.) (Incl. Fig. 74)	
34	06447	Screw—Flat Hd. #8-32 x 2-5/8" (2)*	76	43890	Assy.—Socket Retainer (330)	
35	53762	Assy.—Baffle		43891	Assy.—Socket Retainer (335)	
36	34245	Plunger	77	54366	Assy.—Anvil (330)	
37	21206	Spring		54357	Assy.—Anvil (335)	
38	14712	Baffle—Air Control				
39	09954	Screw—Drive #0 x 3/16" (2)*				
40	20196	Plate—Name (330)				
	20263	Plate—Name (335)				
	20287	Plate—Name (336)				
41	25687	Washer				
42	10206	Bearing—Ball				
43	16133	Armature with Fan (115 V.)				
	16133J	Armature with Fan (230 V.)				
	16822	Armature, Fan & Bearing (115 V.) (Incl. Figs. 42 & 44)				
	16822J	Armature, Fan & Bearing (230 V.) (Incl. Figs. 42 & 44)				

*Order Quantity As Needed

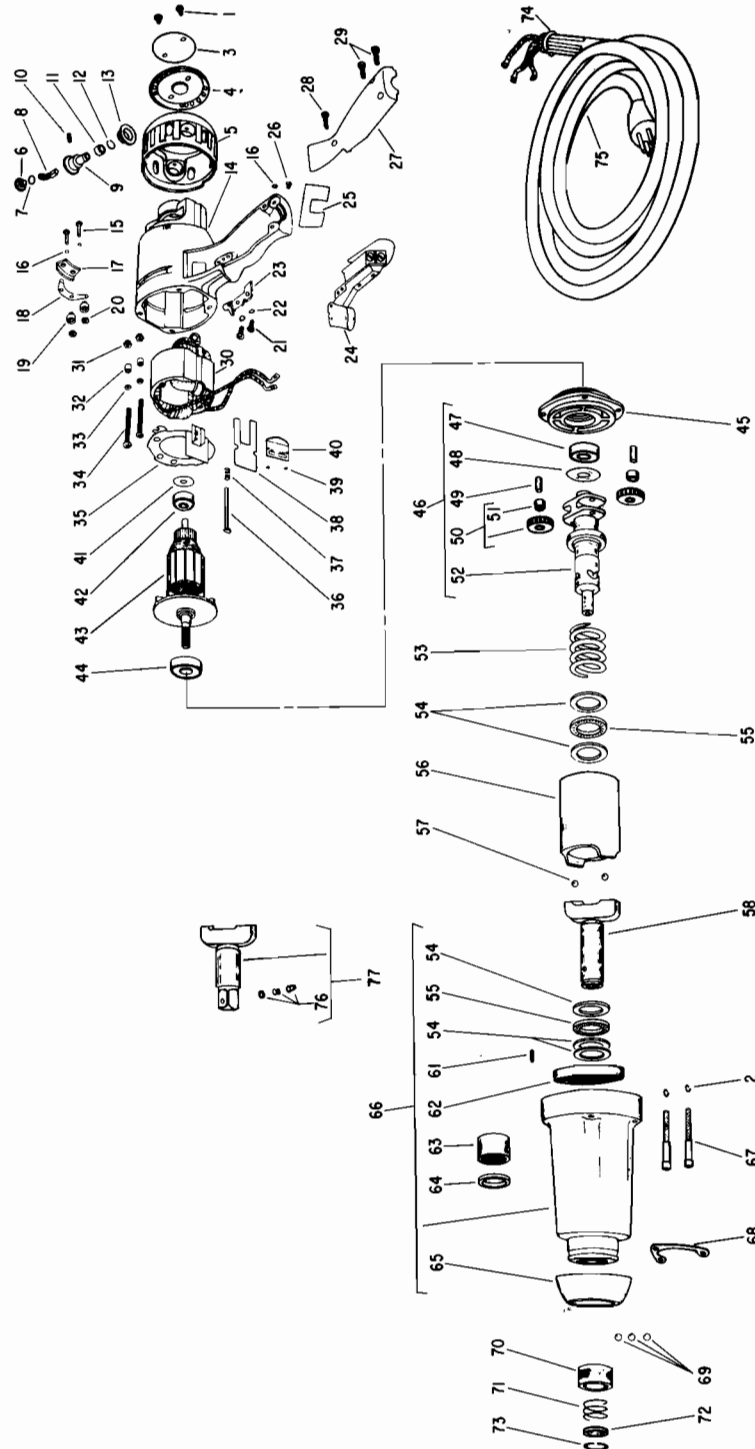
SIoux
TOOLS INC.

SIoux



TOOLS

330 (115 V.), 330J (230 V.) 1/2" Sq. Electric Impact Wrench
335 (115 V.), 335J (230 V.) 5/8" Sq. Electric Impact Wrench
336 (115 V.), 336J (230 V.) 7/16" Hex Quick Change Electric Impact Wrench
(Serial No.'s Starting With "E" and "F")



Furnish Catalog, Serial and Model Number When Ordering Parts

This pdf incorporates the following model numbers:

330, 330J, 335, 335J, 336, 336J