



**NOTE: Parts are no longer available for this tool.**

**The manual will continue on the next page.**

**SIoux****TOOLS**

# 336 (115V) } 7/16" Hex Quick Change 336J (230V) } Electric Impact Wrench

(Ser. No. "D")

Furnish Catalog and Serial Number When Ordering Parts

Fig- ure	Part No.	Name	Fig- ure	Part No.	Name
1	07201	Screw—Phil. Rd. Hd. #10 - 24 x 5/16 (2)*	40	20287	Plate—Name
2	09724	Washer—Lock #10 (6)*	41	25687	Washer
3	20286	Plate—Name	42	10206	Bearing—Ball
4	25691	Retainer—Cap	43	16133	Armature with Fan (115V)
5	12537	Cap		16133J	Armature with Fan (230V)
6	18100	Cap—Brush Holder (2)*		16822	Armature, Fan & Bearings (115V) (Incl. Figs. 42 & 44)
7	14280	Washer (2)*		16822J	Armature, Fan & Bearing (230V) (Incl. Figs. 42 & 44)
8	18015A	Brush (2)	44	10210	Bearing—Ball
9	18069	Assy.—Brush Holder (Incl. Figs. 11 & 12) (2)*	45	12536A	Cover—Gear Case
10	06406	Screw—Set #8 - 32 x 1/4 (2)*	46	53636	Assy.—Pinion Carrier
11	13116	Roller—Reversing Contact (2)*	47	10145	Bearing—Ball
12	21478	Ring—Retainer (2)*	48	25776	Washer
13	14841	Insulator (2)*	49	34121A	Pin (2)*
14	53720	Assy.—Housing (Incl. Figs. 27, 28 & 29 (2))	50	23824	Assy.—Gear & Bearing (2)*
15	06237	Screw—Phil Rd. Hd. #6 - 32 x 3/4 (4)*	51	10019	Bearing—Needle (2)*
16	09704	Washer—Lock #6 (5)*	52	54149	Carrier—Pinion
17	14839	Insulator (2)*	53	41256	Spring
18	13117	Clip—Reversing Contact (2)*	54	10055	Thrust—Race (2)*
19	14840	Insulator—Terminal (4)*	55	10059	Bearing—Needle Thrust
20	09440	Nut—Hex #6 - 32 (4)*	56	54150	Hammer
21	06669	Screw—Phil. Rd. Hd. Self Tap #8 - 32 x 1/2 (2)*	57	10299	Ball—Steel (2)*
22	09712	Washer—Lock #8 (2)*	58	54483	Anvil
23	23801	Assy.—Lever	59	10053	Thrust—Race (3)*
24	18193	Switch	60	10052	Bearing—Needle Thrust
25	14700	Insulation—Switch	61	30229	Pin—Roll
26	06224	Screw—Phil. Rd. Hd. Brass #6 - 32 x 3/16	62	19111	Gear—Internal
27	12534	Cover—Handle	63	10051	Bearing—Roller
28	06589	Screw—Phil. Hd. #8 - 32 x 3/4	64	30661	Seal—Oil
29	06577	Screw—Phil. Hd. #8 - 32 x 5/8 (2)*	65	14299	Protector—Rubber
30	17133	Field—Motor (115V)	66	53662	Assy.—Hammer Case
	17133J	Field—Motor (230V)	67	07088	Screw—Hex Soc. Cap #10 - 24 x 1 1/2 (4)*
31	09458	Nut—Elastic Stop #8-32 (2)*	68	25998	Ball
32	54283	Spacer (2)*	69	10324	Ball—Retainer (3)*
34	06584	Screw—Phil. Rd. Hd. #8-32 x 2 1/4 (2)*	70	34455	Retainer—Ball
35	53739	Assy.—Baffle	71	21414	Spring
36	34245	Plunger	72	34456	Ring—Guide
37	21206	Spring	73	21487	Ring—Retainer
38	14712	Baffle—Air Control	74	21455	Ring—Clinch
39	09954	Screw—Drive #0 x 3/16 (2)*	75	18592	Cord—Electric with Terminals (115V) (Incl. Fig. 74)
				18592J	Cord—Electric with Terminals (230V) (Incl. Fig. 74)

Use No. 108 Lubricant when repairing unit, otherwise permanently lubricated  
\*Order Quantity As Needed

## SIoux TOOLS INC.

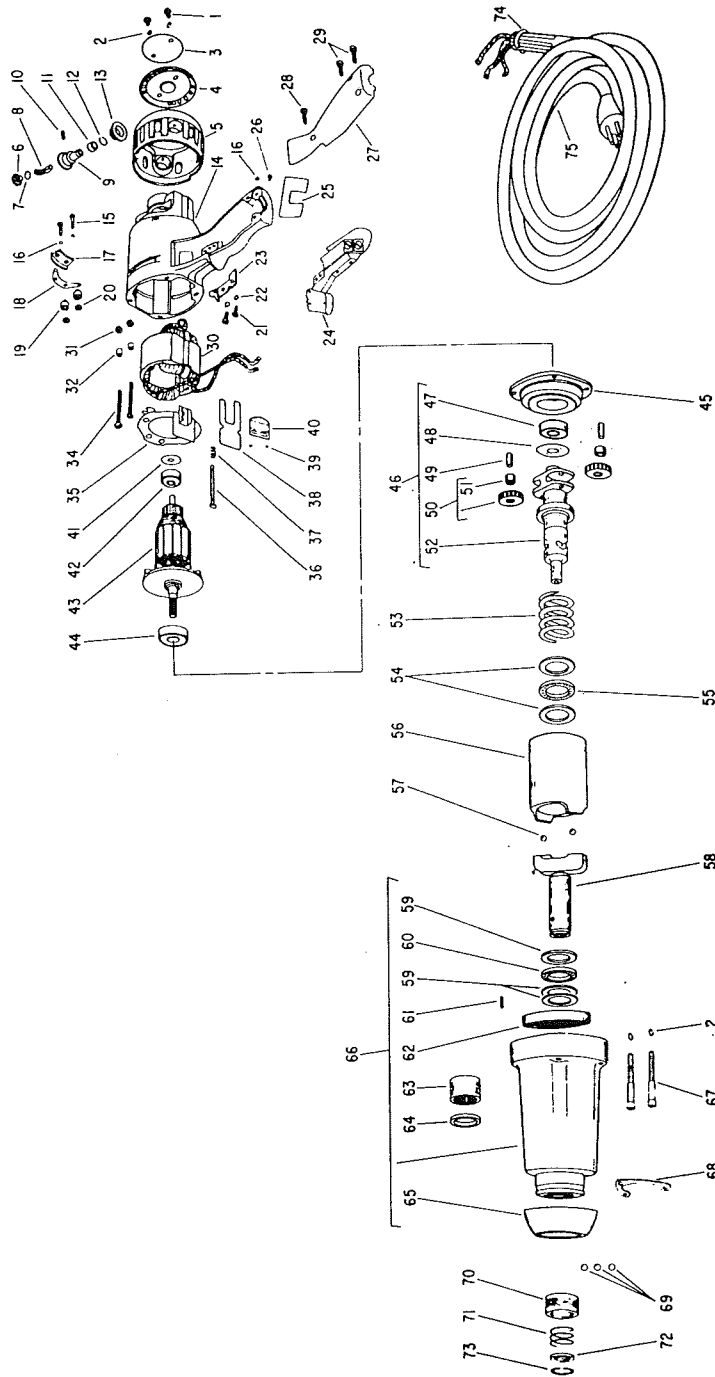
# SIoux



# TOOLS

## 336 (115V) } 7/16" Hex Quick Change 336J (230V) } Electric Impact Wrench

(Ser. No. "D")



Furnish Catalog and Serial Number When Ordering Parts

This pdf incorporates the following model numbers:

336, 336J