



NOTE: Parts are no longer available for this tool.

The manual will continue on the next page.

SIoux



TOOLS

330 1/2" Sq. Electric Impact Wrench 335 5/8" Sq. Electric Impact Wrench

(Ser. No. "B" & Up)

336 7/16" Hex Quick Change Electric Impact Wrench

(Ser. No. "C" Up To "D")

Furnish Catalog and Serial Number When Ordering Parts

Fig-ure	Part No.	Name	Fig-ure	Part No.	Name
1	07201	Screw (2)*	43	16060	Armature With Fan (330, 335)
2	09724	Washer—Lock (6)*		16133	Armature With Fan (336)
3	20188	Plate—Name (330)		16797	Armature With Fan & Bearings (Incl. Figs. 42, 44) (330, 335)
	20262	Plate—Name (335)		16822	Armature With Fan & Bearings (Incl. Figs. 42, 44) (336)
	20286	Plate—Name (336)		21604	Fan
4	25691	Retainer—Cap		10210	Bearing—Ball
5	06237	Screw (4)*	44	12536A	Cover—Gear Case
6	09704	Washer—Lock (5)* (Use one with Fig. No. 22)	45	10145	Bearing—Ball
7	12553	Cap	46	25776	Washer—Pin Stop
8	14841	Insulator (2)*	47	34121	Pin—Planetary Pinion (2)*
9	06406	Screw—Set (2)*	48	10019	Bearing—Needle (2)*
10	21478	Ring—Retainer (2)*	49	23824	Assy.—Gear & Bearing (2)*
11	13116	Roller—Reversing Contact (2)*	50	54149	Carrier—Pinion
12	18069	Assy.—Brush Holder (2)*	51	53636	Assy.—Pinion Carrier
13	18015A	Brush (2)*	52	41256	Spring
14	18100	Cap—Brush Holder (2)*	53	10055	Thrust—Race (5)* (2 Used In Pinion Carrier Assy., 3 Used In 330 Hammer Case)
	14280	Washer (2)*	54	10053	Thrust—Race (3)* (3 Used In 335, 336 Hammer Case Only)
15	14839	Insulator (2)*		10059	Bearing—Needle Thrust (2)* (One Used In Pinion Carrier Assy., One Used In 330 Hammer Case)
16	13117	Clip—Reversing Contact (2)*		10052	Bearing—Needle Thrust (One Used In 335, 336 Hammer Case Only)
17	14840	Insulator—Terminal (4)*	55	54150	Hammer
18	09440	Nut—Hex (4)*	56	10299	Ball—Steel (2)*
19	06577	Screw (2)*	57	53629	Assy.—Pinion Carrier & Hammer
20	12534	Cover—Handle	58	43890	Assy.—Socket Retainer (330)
21	06589	Screw	60	43891	Assy.—Socket Retainer (335)
22	06224	Screw—Brass (Use Lock Washer Fig. No. 6)	61	53627	Assy.—Anvil (330)
23	21455	Ring—Clinch		53628	Assy.—Anvil (335)
24	18592	Cord—Electric, with Terminals (10 ft.) (Incl. Fig. 23)	62	30229	Pin—Roll
	18594	Cord—Electric, with Terminals (25 ft.) (Incl. Fig. 23)	63	19111	Gear—Internal
25	14700	Insulation—Switch	64	10060	Bearing—Roller (330)
26	18193	Switch	64	10051	Bearing—Roller (335, 336)
27	06669	Screw (2)*	65	30258	Seal—Oil (330)
28	09712	Washer—Lock (2)*		30661	Seal—Oil (335, 336)
29	23801	Assy.—Lever	67	14294	Protector—Rubber (330)
30	23819	Assy.—Housing (Incl. Figs. 19, 20, 21) (330, 335)		14299	Protector—Rubber (335, 336)
	53720	Assy.—Housing (Incl. Figs. 19, 20, 21) (336)	67	53635	Assy.—Hammer Case (330)
31	17060	Field—Motor (330, 335)		53662	Assy.—Hammer Case (335, 336)
	17133	Field—Motor (336)	69	25998	Bail (336)
32	09458	Nut—Elastic Stop (2)*	70	07088	Screw (4)*
33	25826	Washer (2)*	71	54483	Anvil (336)
34	06584	Screw (2)* (330, 335)	72	10324	Ball—Retainer (336) (3)*
	06682	Screw (2)* (336)	73	34455	Retainer—Ball (336)
35	20196	Plate—Name (330)	74	21414	Spring (336)
	20263	Plate—Name (335)	74	34456	Ring—Guide (336)
	20287	Plate—Name (336)	75	21487	Ring—Retainer (336)
36	09954	Screw—Drive (2)*	76	14278	Protector—Rubber (Upper) (336)
37	14712	Baffle—Air Control (330, 335)		18603	Terminal—Ground
38	21206	Spring		18610	Terminal (4)*
39	34245	Plunger	77	28058	Lug—Wire Retainer (336)
40	23728	Assy.—Baffle Plate (330, 335)			
41	25687	Washer			
42	10206	Bearing—Ball			

Use No. 108 Lubricant when repairing unit, otherwise permanently lubricated
*Order Quantity As Needed

SIoux TOOLS INC.

2801-2999 FLOYD BOULEVARD ■ SIOUX CITY, IOWA 51102 ■

Printed in U.S.A.

SIoux TOOLS

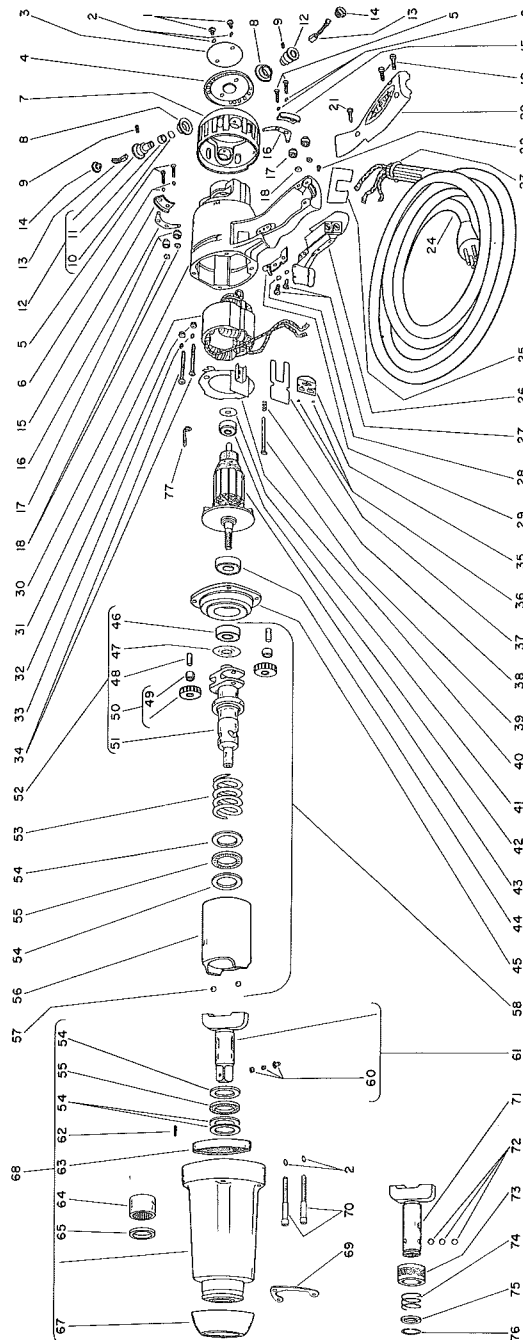
330 1/2" Sq. Electric Impact Wrench

335 5/8" Sq. Electric Impact Wrench

(Ser. No. "B" & Up)

336 7/16" Hex Quick Change Electric Impact Wrench

(Ser. No. "C" Up To "D")



Furnish Catalog and Serial Number When Ordering Parts

This pdf incorporates the following model numbers:

330, 335, 336