



NOTE: Parts are no longer available for this tool.

The manual will continue on the next page.

SIoux



TOOLS

Parts List for No's. 330, 335 & 336

SIoux IMPACT WRENCH

(Up To Ser. "B")

Furnish Catalog and Serial Number When Ordering Parts

Fig- Part ure No.	Name	Fig- Part ure No.	Name
1	10392 Bushing—Steel (330)	48	06577 Screw #8 (330 up to Serial 171414)
	10395 Bushing—Steel (330-5/8"-335-336)		(335 up to Serial 185791)
2	14294 Protector—Rubber (330)		06589 Screw #8 (330 Serial 171424 up)
	14299 Protector—Rubber (335-336)		(335 Serial 185801 up) (336)
3	19111 Gear—Internal	49	12534 Cover—Handle
4	30229 Pin—Roll	50	06224 Screw—Brass #6
5	33497 Ass'm.—Gear Case (330)		09704 Washer—Lock #6
	23923 Ass'm.—Gear Case (330-5/8"-335-336)	51	21455 Ring—Clinch
6	07088 Screw #10 (4)	52	18592 Cord—Electric, with terminals (10 ft.)
7	09726 Washer—Lock #10 (6)		18594 Cord—Electric, with terminals (25 ft.)
8	10306 Ball (2)	53	18756 Adaptor
9	34123 Race—Inner	54	14700 Insulation—Switch
10	10316 Ball (Per 11)	55	18172 Switch—(330-up to serial 171414)
11	34116 Race—Outer		(335-up to serial 185791)
12	34119 Hammer		18193 Switch—(330-Serial 171424 up)
13	21339 Spring—Compression		(335-Serial 185801 up) (336)
14	34241A Guide	56	06669 Screw—#8 (2)
15	10320 Bearing—Thrust, complete	57	09712 Washer—Lock #8 (2)
16	25853 Race—Bearing (2)	58	23801 Lever
17	10319 Bearing—Thrust	59	20189 Plate—Name (330-up to Serial 107683)
18	23828 Ass'm.—Pinion Carrier		20196 Plate—Name (330-Serial 107684 up)
19	34120 Carrier—Pinion		20263 Plate—Name (335)
20	23824 Ass'm.—Gear, with 10019 Needle		20287 Plate—Name (336)
	Bearing (2)	60	09954 Screw (2)
21	10019 Bearing—Needle (2)	61	14712 Baffle—Air Control (330-Serial 107684
22	34121 Pin—Planetary Pinion (2)		up) (335-336)
23	25776 Washer—Pin Stop	62	21206 Spring
24	10145 Bearing—Ball	63	34245 Plunger
25	06584 Screw #8 (2)	64	23728 Plate—Baffle
26	25826 Washer (2)	65	25687 Washer
27	09458 Nut—Elastic Stop #8 (2)	66	10206 Bearing—Ball
28	17060 Field—Motor	67	16060 Armature with Fan
29	23819 Ass'm.—Housing (Incl. Figs. 47, 48, 49,		16797 Armature with Fan & Bearings
	55, 58)	68	10210 Bearing—Ball
30	09440 Nut #6 (4)	69	33117 Cover—Gear Case (330)
31	14840 Insulator—Terminal (4)		33462 Cover—Gear Case (335)
32	13117 Clip—Reversing Contact (2)		33721 Cover—Gear Case (336)
33	14839 Block—Insulator (2)	70	23829 Ass'm.—Pinion Carrier & Hammer
34	09704 Washer—Lock #6 (4)	71	23730 Ass'm.—Anvil (330)
35	06237 Screw #6 (4)		23916 Ass'm.—Anvil for units with 5/8"
36	18069 Ass'm.—Brush Holder (2)		Drive (330-335)
	18067 Holder—Brush (2)	72	14281 Ring—"O" (330)
37	21478 Ring—Retainer (2)		14274 Ring—"O" (330-5/8"-335-336)
38	13116 Roller—Reversing Contact (2)	73	33985 Ass'm.—Socket Retainer (330)
39	18015A Brush—Motor (2) Pair		33986 Ass'm.—Socket Retainer (335)
40	18100 Cap—Brush Holder (2)	77	33719 Ass'm.—Anvil (336)
	14280 Washer (2)	78	10324 Ball—Retainer (3) (336)
41	06406 Screw #8 (2)	79	34455 Retainer—Ball (336)
42	14841 Bushing—Insulator (2)	80	21414 Spring (336)
43	12553 Cap	81	34456 Ring—Guide (336)
44	25691 Retainer—Cap	82	21487 Ring—Retainer (336)
45	20188 Plate—Name (330)	83	25998 Bail (336)
	20262 Plate—Name (335)		18610 Terminal (4)
	20286 Plate—Name (336)		18603 Terminal—Ground
46	07201 Screw #10 (2)		14278 Protector—Upper Rubber
47	06577 Screw #8 (2)		21604 Fan

Use No. 108 lubricant when repairing unit, otherwise permanently lubricated

SIoux TOOLS INC.

FORM A189—12-75

2801-2999 FLOYD BOULEVARD ■ SIOUX CITY, IOWA 51102 ■

PRINTED
IN
U.S.A.

SIoux

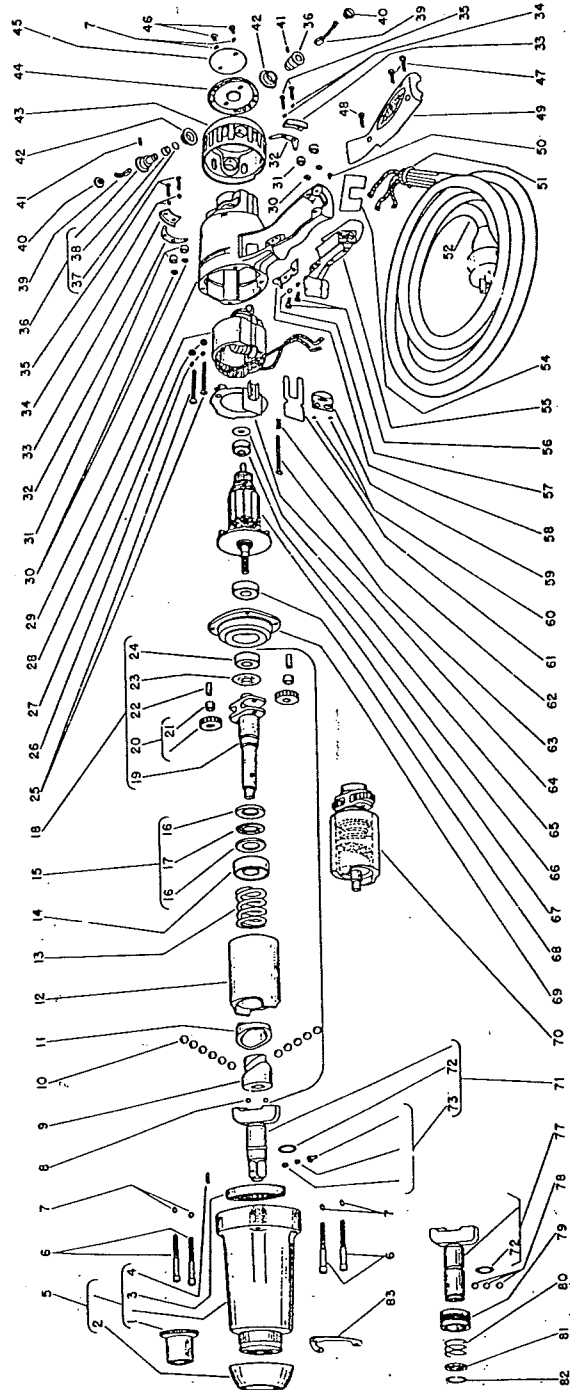


TOOLS

Parts List for No's. 330, 335 & 336

SIoux IMPACT WRENCH

(Up To Ser. "B")



Furnish Catalog, Serial and Model Number When Ordering Parts

This pdf incorporates the following model numbers:

330, 335, 336