



**NOTE: Parts are no longer available for this tool.**

**The manual will continue on the next page.**

**SIoux****TOOLS**

## Parts List for No's. 1785, 1786, 1788, 1790 & 1799

### Sioux Air High Speed Driver

(Serial No. 10,000 & Up)

Furnish Catalog, Serial and Model Number When Ordering Parts

| Fig-<br>ure | Part<br>No. | Name   | Fig-<br>ure | Part<br>No. | Name  |
|-------------|-------------|--|-------------|-------------|---|
| 1           | 44273       | Collar (1785, 1786)                            | 33          | 10520       | End Plate—Rear  |
| 2           | 13191       | Ring (1785, 1786)                              | 34          | 35067       | Washer—Wave   |
| 3           | 21522       | Ring—Retaining (1785, 1786)                    | 35          | 06325       | Screw (2)   |
| 4           | 21421       | Spring (1785, 1786)                            | 36          | 09704       | Washer—Lock (2)   |
| 5           | 44284       | Collar—Release (1785, 1786)                    | 37          | 14312       | Ring—"O" (3)  |
| 6           | 06600       | Screw (2) (1785, 1786)                         | 38          | 43664       | Assy.—Gov. Valve  |
| 7           | 09712       | Washer—Lock (2) (1785, 1786)                   | 39          | 44218       | Spacer—Gov. Weight (4) (1785, 1786,<br>1788, 1790)      |
| 8           | 44275       | Guide (2) (1785, 1786)                         |             | 44323       | Spacer—Gov. Weight (4) (1799)                           |
| 9           | 44287       | Case (1785, 1786)                              | 40          | 30336       | Pin—Roll (2)  |
| 10          | 44271       | Sleeve—Bearing (1788, 1790, 1799)              | 41          | 21416       | Spring—Gov. (Green) (1785, 1790)                        |
| 11          | 10245       | Bearing—Ball                                   |             | 21411       | Spring—Gov. (Red) (1786, 1788,<br>1799)                 |
| 12          | 43046       | Spindle—Tool                                   | 42          | 13183       | Nut—Gov. Adjusting                                      |
| 13          | 21419       | Spring   | 43          | 35069       | Weight—Gov. [1785, 1786, 1788, 1790<br>(6)] [1799 (12)] |
| 14          | 44269       | Spacer—Bearing                                 | 44          | 44222       | Frame—Gov.  |
| 15          | 10167       | Bearing—Ball                                   | 45          | 43666       | Assy.—Brg. Support & Spindle                            |
| 16          | 30356       | Fitting—Grease                                 | 46          | 44253       | Oiler Screw   |
| 17          | 12279       | Castings—Front                                 | 47          | 14369       | Ring—"O"  |
| 18          | 20337       | Plate—Name (1785)                              | 48          | 43106       | Assy.—Handle (Incl. Fig. 46, 51, 52 &<br>53)            |
|             | 20338       | Plate—Name (1786)                              | 49          | 09724       | Washer—Lock (4)   |
|             | 20339       | Plate—Name (1788)                              | 50          | 07129       | Screw (4)   |
|             | 20340       | Plate—Name (1790)                              | 51          | 33967       | Assy.—Trigger   |
|             | 20341       | Plate—Name (1799)                              | 52          | 30347       | Pin (2)   |
| 19          | 06000       | Screw (2)                                      | 53          | 30375       | Fitting—Grease  |
| 20          | 44220       | Rotor  | 54          | 33998       | Assy.—Throttle Valve                                    |
| 21          | 10241       | Bearing—Ball                                   | 55          | 30424       | Pin   |
| 22          | 43670       | Assy.—Governor (8,000 R.P.M.)<br>(1785, 1790)  | 56          | 14274       | Ring—"O"  |
|             | 43669       | Assy.—Governor (10,000 R.P.M.)<br>(1786, 1788) | 57          | 14307       | Ring—"O"  |
|             | 43671       | Assy.—Governor (6000 R.P.M.) (1799)            | 58          | 33993       | Assy.—Air Screen  |
| 23          | 14751       | Gasket   | 59          | 43133       | Assy.—Swivel  |
| 24          | 44245       | Retainer—Gov. Valve                            | 60          | 43334       | Assy.—Swivel Body                                       |
| 25          | 14750       | Retainer—Screw (2)                             | 61          | 34819       | Pin (4)   |
| 26          | 44219       | Key—Rotor                                      | 62          | 13201       | Swivel  |
| 27          | 44268       | Spindle—Rotor                                  | 63          | 21523       | Ring—Retaining  |
| 28          | 10243       | Bearing—Ball                                   | 64          | 14752       | Gasket (1799)   |
| 29          | 10531       | End Plate—Front                                | 65          | 06930       | Screw (4)   |
| 30          | 43022       | Assy.—Cylinder & Pin                           | 66          | 35085       | Hook—Suspension   |
| 31          | 12276       | Housing  |             |             |   |
| 32          | 33997       | Vane—Rotor (Set of 4)                          |             |             |   |

**SIoux TOOLS INC.**  
SIoux CITY, IOWA, U.S.A. 51102

# SIoux

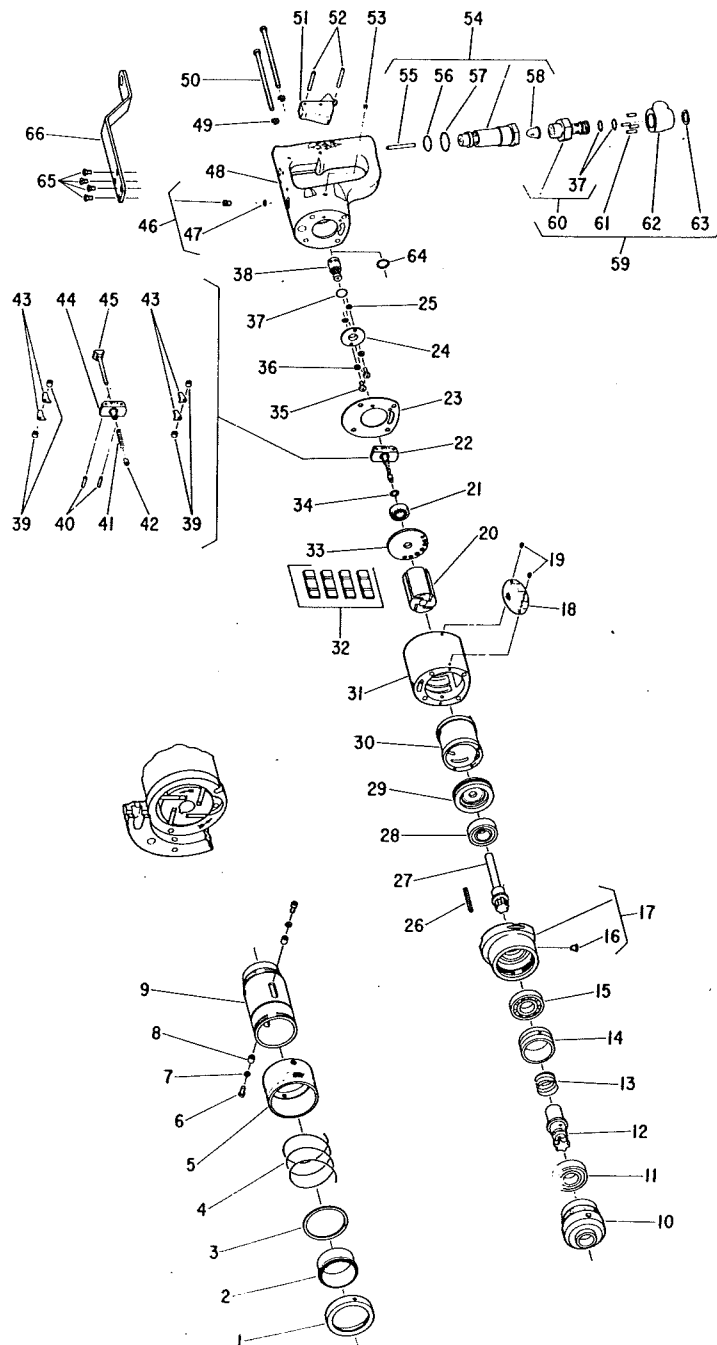


# TOOLS

## Parts List for No's. 1785, 1786, 1788, 1790 & 1799

### Sioux Air High Speed Driver

(Serial No. 10,000 & Up)



Furnish Catalog, Serial and Model Number When Ordering Parts

This pdf incorporates the following model numbers:

1785, 1786, 1788, 1790, 1799