



NOTE: Parts are no longer available for this tool.

The manual will continue on the next page.



Parts List for No. 478 AIR IMPACT WRENCH and No. 479 SCREW DRIVER

(UP TO SERIAL B99)

Furnish Catalog and Serial Number When Ordering Parts

Fig- ure	Part No.	Name	Fig- ure	Part No.	Name
1	14364	Protector—Rubber	*38	14312	Ring—"O"
* 2	30408	Seal (478)	39	14369	Ring—"O"
3	33961	Ass'm.—Hammer Case (478)	*40	33991	Ass'm.—Oiler Screw & Chain
4	07091	Screw—#10 (4)	41	44204	Rack—Reversing Valve
5	09726	Washer—Lock #10 (8)	42	44100	Bushing—Reducing
6	35062	Bail—Front	43	21417	Spring
* 7	14339	Ring—"O"	44	33993	Screen—Air
8	35073	Washer—Split (Set of 2) (Up to Serial 16000)	45	30359	Plug
	30617	Ring—Spring Retainer (Serial 16001 & Up)	46	21401	Spring—Throttle Valve
9	35081	Washer (Up to Serial 16000)	47	35082	Deflector—Air
	44882	Retainer—Ring (Serial 16001 & Up)	48	06362	Screw—#6
10	21410	Spring—Hammer	49	30325	Pin (2)
11	11528	Hammer—Auxiliary	*50	14325	Valve—Rubber
12	10322	Ball	51	25957	Washer
13	10234	Bearing—Ball (Up to Serial 7000)	52	33892	Ass'm.—Valve
	44482	Bearing—Steel (Serial 7001 & up)	53	33928	Ass'm.—Valve Seat
14	44208	Frame—Hammer	54	33881	Trigger
15	10236	Bearing—Ball	55	14047	Pin—Lock (Up to Serial 7000)
16	44242	Spacer—Hammer Case	56	44249	Cam—Spindle (Up to Serial 16000)
†17	43885	Housing	44906	Cam—Spindle (Serial 16001 & up)	
18	10247	Bearing—Ball	60	33986	Ass'm.—Socket Retainer (478)
19	33975	Plate—Front End	61	33959	Ass'm.—Anvil (478)
*20	43027	Vane—Rotor (Set of 5)	43012	Ass'm.—Sp. 3" Longer Anvil (478)	
21	44197	Ass'm.—Rotor	43013	Ass'm.—Sp. 5" Longer Anvil (478)	
22	30356	Fitting—Grease	62	43064	Ass'm.—Hammer Case (479)
23	44196	Pin—Alignment	63	43066	Ass'm.—Anvil (479)
24	33958	Plate—Rear End	*64	14366	Ring—"O" (479)
25	10203	Bearing—Ball	65	10299	Ball—Steel (3) (479)
26	07094	Screw—#10 (4)	66	44320	Retainer (479)
27	43024	Cap—Housing	67	21426	Spring (479)
28	44139	Cap—Grease	68	44319	Ring—Guide (479)
29	44201	Knob—Output Control	69	21527	Ring—Retainer (479)
30	30257	Pin	70	30413	Pin (3)
31	10902	Ball	71	10412	Bushing (478)
32	21223	Spring—Tension		10415	Bushing (479)
*33	14291	Ring—"O" (3)	*72	14753	Washer—Fiber
34	43025	Ass'm.—Output Control	73	44199	Insert—Hex. (4)
*35	14748	Gasket	74	10299	Ball—Steel (Serial 7001 & up)
36	44256	Cylinder			
37	43026	Ass'm.—Reversing Valve			

*These parts included in Tune-Up Set No. 43904

†Includes Fig. 17, 27 thru 35, 40, 42 thru 46, 49 thru 55

SIoux TOOLS Inc.

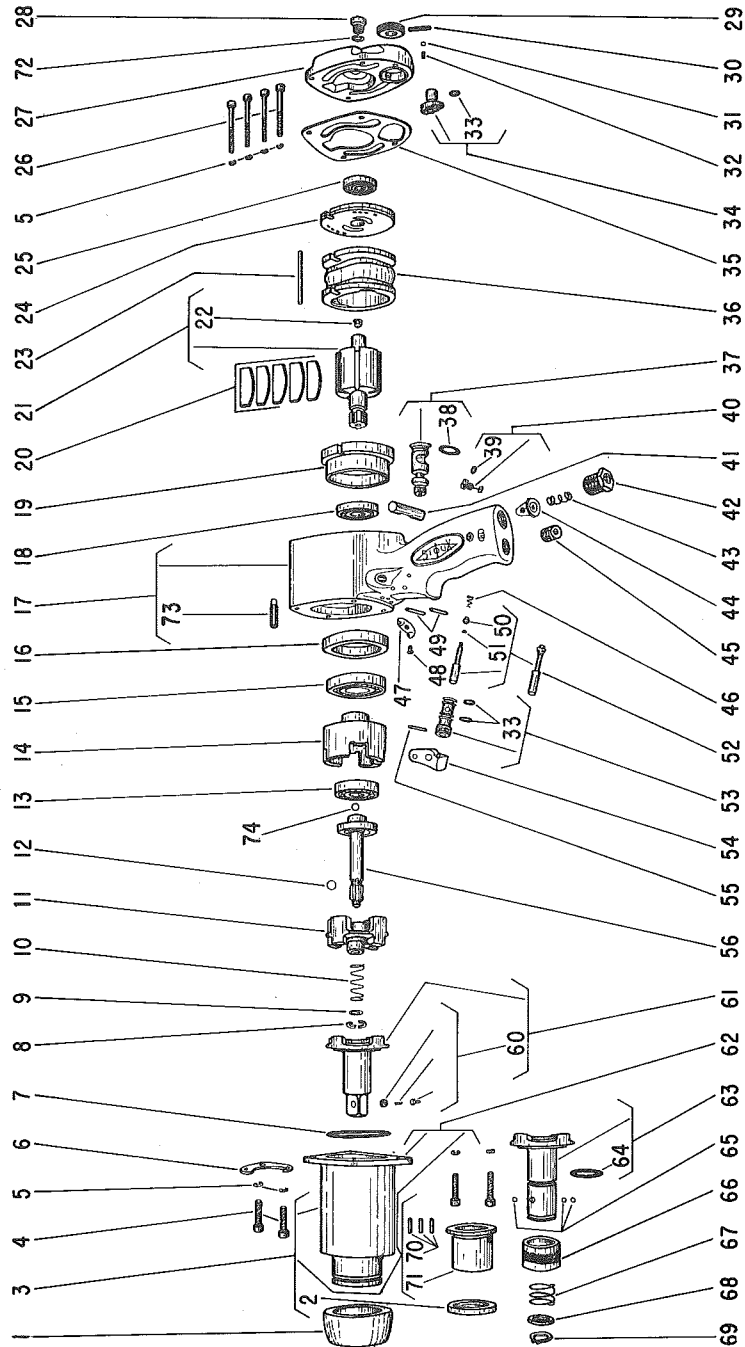
SIoux CITY, IOWA, U.S.A. 51102

SIoux



TOOLS

Parts List for No. 478 AIR IMPACT WRENCH and No. 479 SCREW DRIVER (UP TO SERIAL B99)



Furnish Catalog and Serial Number When Ordering Parts

This pdf incorporates the following model numbers:

478, 479