



NOTE: Parts are no longer available for this tool.

The manual will continue on the next page.

SIoux**TOOLS**

Parts List for No. 1792 & 1793 Sioux Air High Speed Driver

(Serial No. 10000 & Up)

Furnish Catalog, Serial and Model Number When Ordering Parts

Fig- ure	Part No.	Name	Fig- ure	Part No.	Name
1	43133	Assy.—Swivel	28	09704	Washer—Lock (2)*
2	21523	Ring—Retaining	29	06325	Screw (2)*
3	13201	Swivel	30	35067	Washer—Wave
4	34819	Pin (4)*	31	10520	End Plate—Rear
5	43334	Assy.—Swivel Body	32	33997	Vane—Rotor (Set of 4)
6	14312	Ring—"O" (3)*	33	12276	Housing
7	33998	Assy.—Throttle Valve	34	33979	Cylinder
8	33993	Assy.—Air Screen	35	10531	End Plate—Rear
9	14307	Ring—"O"	36	10243A	Bearing—Ball
10	14274	Ring—"O"	37	44219	Key—Rotor
11	30424	Pin	38	44226	Spindle—Rotor
12	30375	Fitting—Grease	39	14750	Retainer—Screw (2)*
13	30347	Pin (2)*	40	44245	Retainer—Gov. Valve
14	33967	Assy.—Trigger	41	14751	Gasket
15	07129	Screw (4)*	42	43669	Assy.—Governor (1792)
16	09724	Washer—Lock (4)*		43670	Assy.—Governor (1793)
17	43073	Assy.—Handle (Incl. Fig. 12, 13, 14 & 18)	43	10241	Bearing—Ball
18	44253	Oiler Screw & "O" Ring	44	44220	Rotor
19	14369	Ring—"O"	45	06000	Screw (2)*
20	35069	Weight—Gov. (6)*	46	20332	Plate—Name (1792)
21	43666	Assy.—Brg. Support & Spindle		20334	Plate—Name (1793)
22	44222	Frame—Gov.	47	12277	Case—Gear
23	44218	Spacer—Gov. (4)*	48	30356	Fitting—Grease
24	30336	Pin—Roll (2)*	49	22939	Spindle—Spline Tool
25	21411	Spring—Gov. (Red) (1792)	51	33970	Cap—Bearing
	21416	Spring—Gov. (Green) (1793)	52	21214	Spring
26	13183	Nut—Gov. Adjusting	53	19169	Gear—Spiral Bevel
27	43664	Assy.—Gov. Valve	54	10113	Bearing—Ball
			55	08279	Screw

*Order Quantity As Needed

SIoux TOOLS INC.

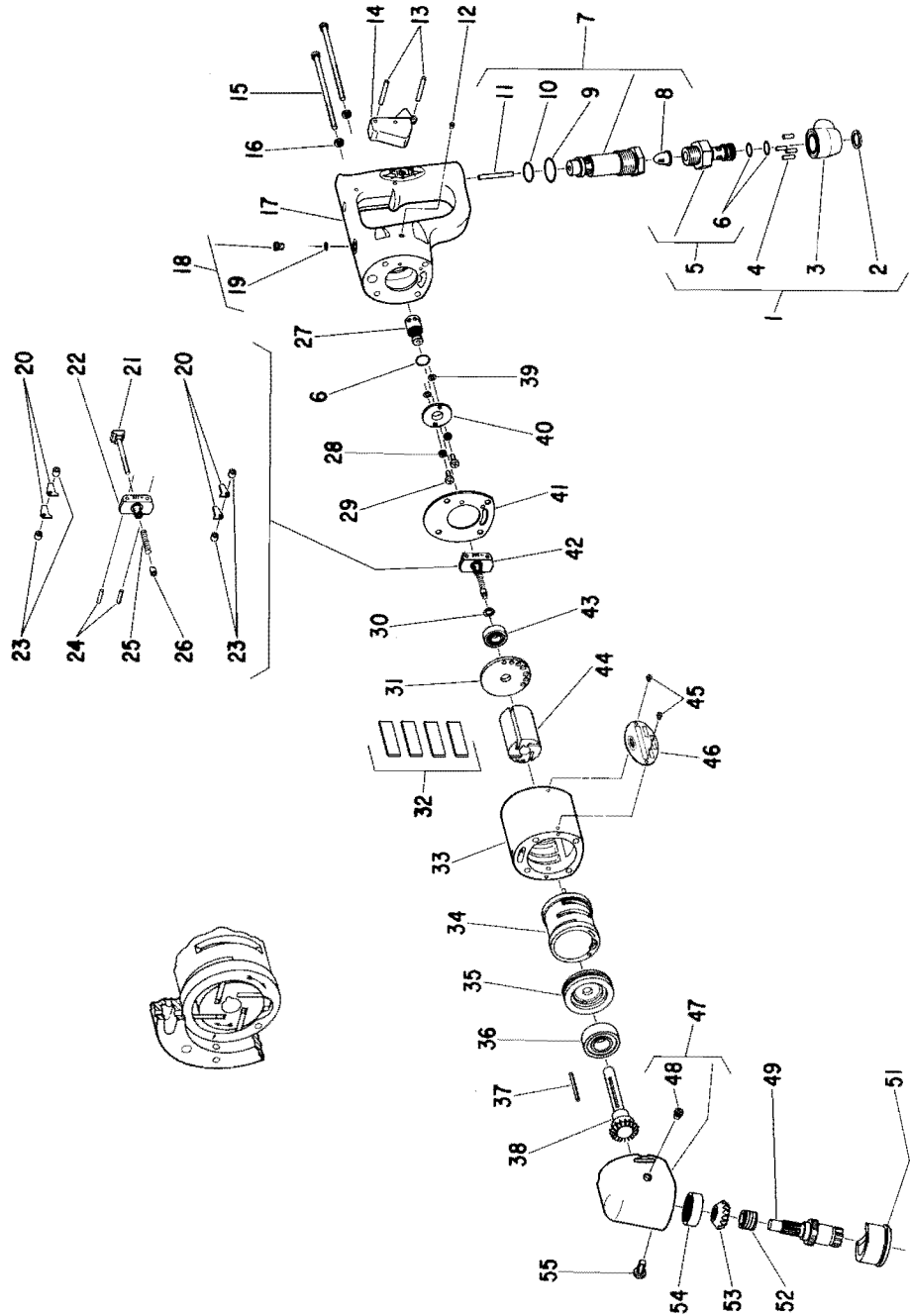
SIoux



TOOLS

Parts List for No. 1792 & 1793 Sioux Air High Speed Driver

(Serial No. 10000 & Up)



Furnish Catalog, Serial and Model Number When Ordering Parts

This pdf incorporates the following model numbers:

1792, 1793