



NOTE: Parts are no longer available for this tool.

The manual will continue on the next page.

SIoux**TOOLS**

Parts List for No. 1792
Sioux Air High Speed Driver

(Serial No. 10000 & Up)

Furnish Catalog, Serial and Model Number When Ordering Parts

Fig- ure	Part No.	Name	Fig- ure	Part No.	Name
1	43133	Assy.—Swivel	29	06325	Screw (2)*
2	21523	Ring—Retaining	30	35067	Washer—Wave
3	13201	Swivel	31	10520	End Plate—Rear
4	34819	Pin (4)*	32	33997	Vane—Rotor (Set of 4)
5	43334	Assy.—Swivel Body	33	12276	Housing
6	14312	Ring—“O” (3)*	34	33979	Cylinder
7	33998	Assy.—Throttle Valve	35	10531	End Plate—Rear
8	33993	Assy.—Air Screen	36	10243	Bearing—Ball
9	14307	Ring—“O”	37	44219	Key—Rotor
10	14274	Ring—“O”	38	44226	Spindle—Rotor
11	30424	Pin	39	14750	Retainer—Screw (2)*
12	30375	Fitting—Grease	40	44245	Retainer—Gov. Valve
13	30347	Pin (2)*	41	14751	Gasket
14	33967	Assy.—Trigger	42	43669	Assy.—Gov. Valve
15	07129	Screw (4)*	43	10241	Bearing—Ball
16	09724	Washer—Lock (4)*	44	44220	Rotor
17	43073	Assy.—Handle (Incl. Fig. 12, 13, 14 & 18)	45	06000	Screw (2)*
18	43553	Assy.—Oiler Screw & “O” Ring	46	20332	Plate—Name
19	14369	Ring—“O”	47	12277	Case—Gear
20	35069	Weight—Gov. (6)*	48	30356	Fitting—Grease
21	43666	Assy.—Brg. Support & Spindle	49	22939	Spindle—Spline Tool
22	44222	Frame—Gov.	51	33970	Cap—Bearing
23	44218	Spacer—Gov. (4)*	52	21214	Spring
24	30336	Pin—Roll (2)*	53	19169	Gear—Spiral Bevel
25	21411	Spring—Gov. (Red)	54	10113	Bearing—Ball
26	13183	Nut—Gov. Adjusting	55	08279	Screw
27	43664	Assy.—Gov. Valve			
28	09704	Washer—Lock (2)*			

* Order Quantity As Needed

SIoux TOOLS INC.
 SIOUX CITY, IOWA, U.S.A. 51102

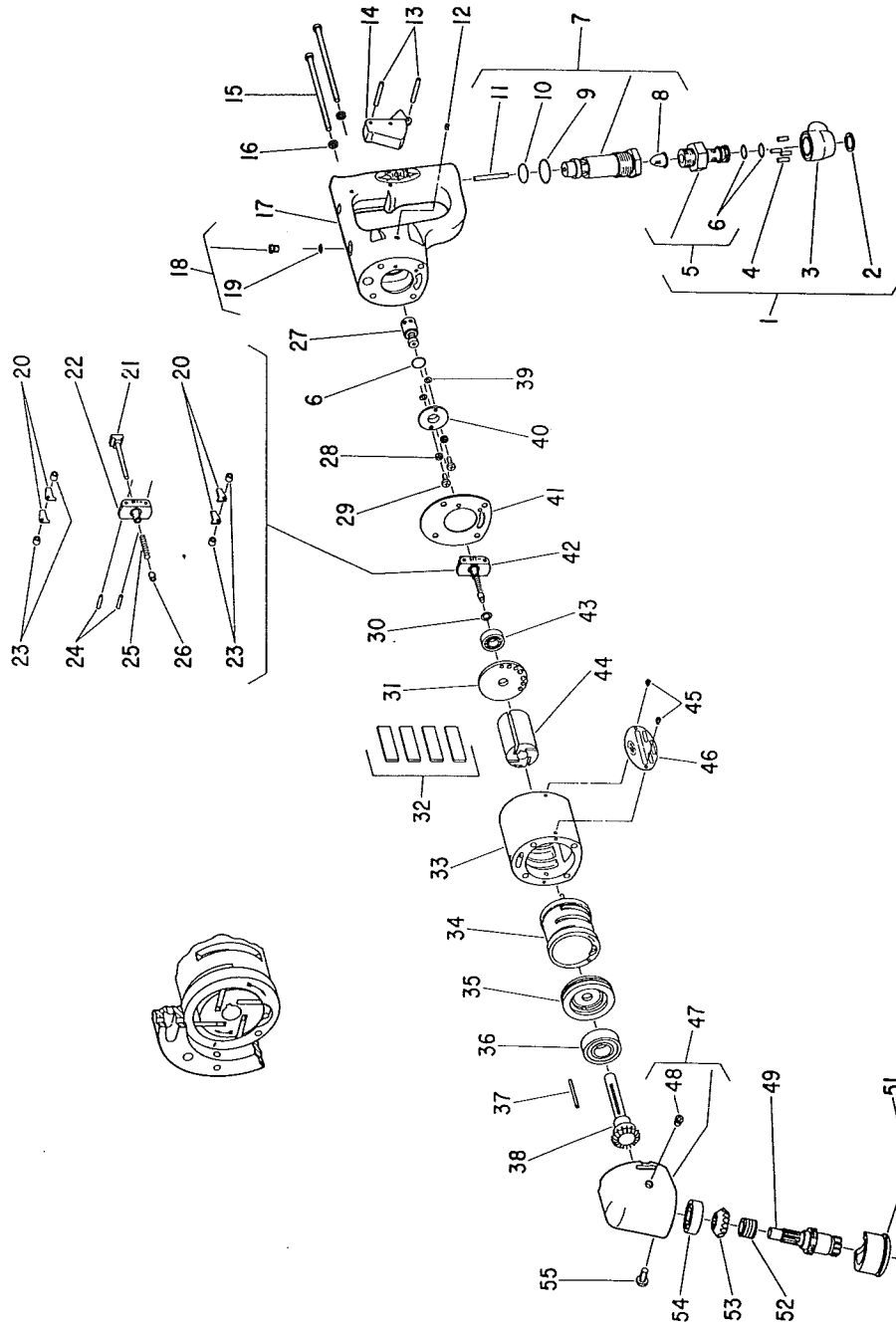
SIoux



TOOLS

Parts List for No. 1792
Sioux Air High Speed Driver

(Serial No. 10000 & Up)



Furnish Catalog, Serial and Model Number When Ordering Parts

This pdf incorporates the following model numbers:

1792