



NOTE: Parts are no longer available for this tool.

The manual will continue on the next page.

SIoux**TOOLS**

Parts List for No's. 1791, 1792, 1793 & 1794

Sioux Air High Speed Driver

(Up To Serial No. 9999)

Furnish Catalog, Serial and Model Number When Ordering Parts

Fig- ure	Part No.	Name	Fig- ure	Part No.	Name
1	22939	Spindle—Spline Tool (1792-1793)	27	14307	Ring—"O"
	22614	Spindle—Hex. Tool (1791-1794)	31	21523	Ring—Retainer
2	19169	Gear—Spiral Bevel	32	43133	Ass'm.—Swivel
3	12277	Case—Gear	33	33993	Screen—Air
4	44219	Key—Rotor	34	33998	Ass'm.—Throttle Valve
5	10243	Bearing—Ball	35	30347	Pin (2)
6	10531	Plate—Front End	36	33967	Trigger
7	33997	Vane—Rotor (Set of 4)	37	06000	Screw—#2 (2)
8	10520	Plate—Rear End	38	20332	Plate—Name (1792)
9	35067	Washer—Wave		20334	Plate—Name (1793)
10	33971	Ass'm.—Governor (Incl. Fig. 17) (1791-1792)		20336	Plate—Name (1794)
	33990	Ass'm.—Governor (Incl. Fig. 17) (1793-1794)		20335	Plate—Name (1791)
*11	10233	Bearing—Ball (Not Available)	39	44218	Spacer—Governor Weight (4)
12	06325	Screw—#6 (2)	40	35069	Weight—Governor (6)
13	09704	Washer—Lock #6 (2)	41	30336	Pin (2)
14	44245	Retainer—Governor Valve	42	44222	Frame—Governor
15	14312	Ring—"O"	43	13183	Nut—Governor Adjusting
16	14750	Retainer—Screw (2)	*44	33966	Ass'm.—Bearing Support & Spindle
*17	33972	Ass'm.—Governor Valve	45	21411	Spring—Governor (1792-1791) (Red)
18	12276	Housing		21416	Spring—Governor (1793-1794) (Green)
19	14751	Gasket	46	10241	Bearing—Ball
20	43073	Ass'm.—Handle (Incl. Fig's. 35 & 36)	47	33979	Cylinder
21	14369	Ring—"O"	48	44220	Rotor
22	33991	Ass'm.—Oiler Screw & Chain	50	44226	Spindle—Rotor
23	09724	Washer—Lock #10 (4)	51	08279	Screw—1/4"
24	07129	Screw—#10 (4)	52	10113	Bearing—Ball
26	14274	Ring—"O"	53	21214	Spring
			54	33970	Cap—Bearing

* Order Kit No. 43753 (Includes Fig's. 11, 17 & 44)

SIoux TOOLS INC.
SIoux CITY, IOWA, U.S.A. 51102

SIoux

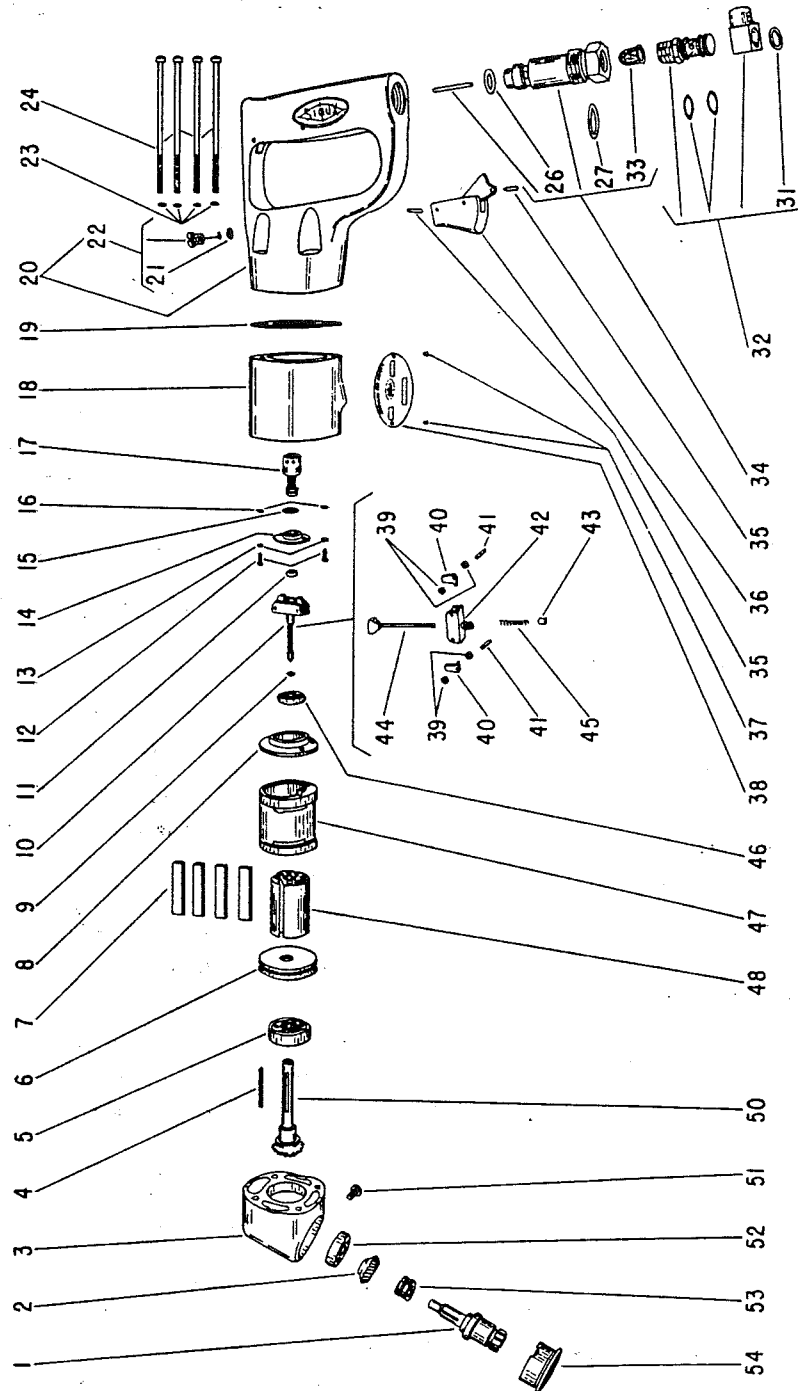


TOOLS

Parts List for No's. 1791, 1792, 1793 & 1794

Sioux Air High Speed Driver

(Up To Serial No. 9999)



Furnish Catalog, Serial and Model Number When Ordering Parts

This pdf incorporates the following model numbers:

1791, 1792, 1793, 1794