



**NOTE: Parts are no longer available for this tool.**

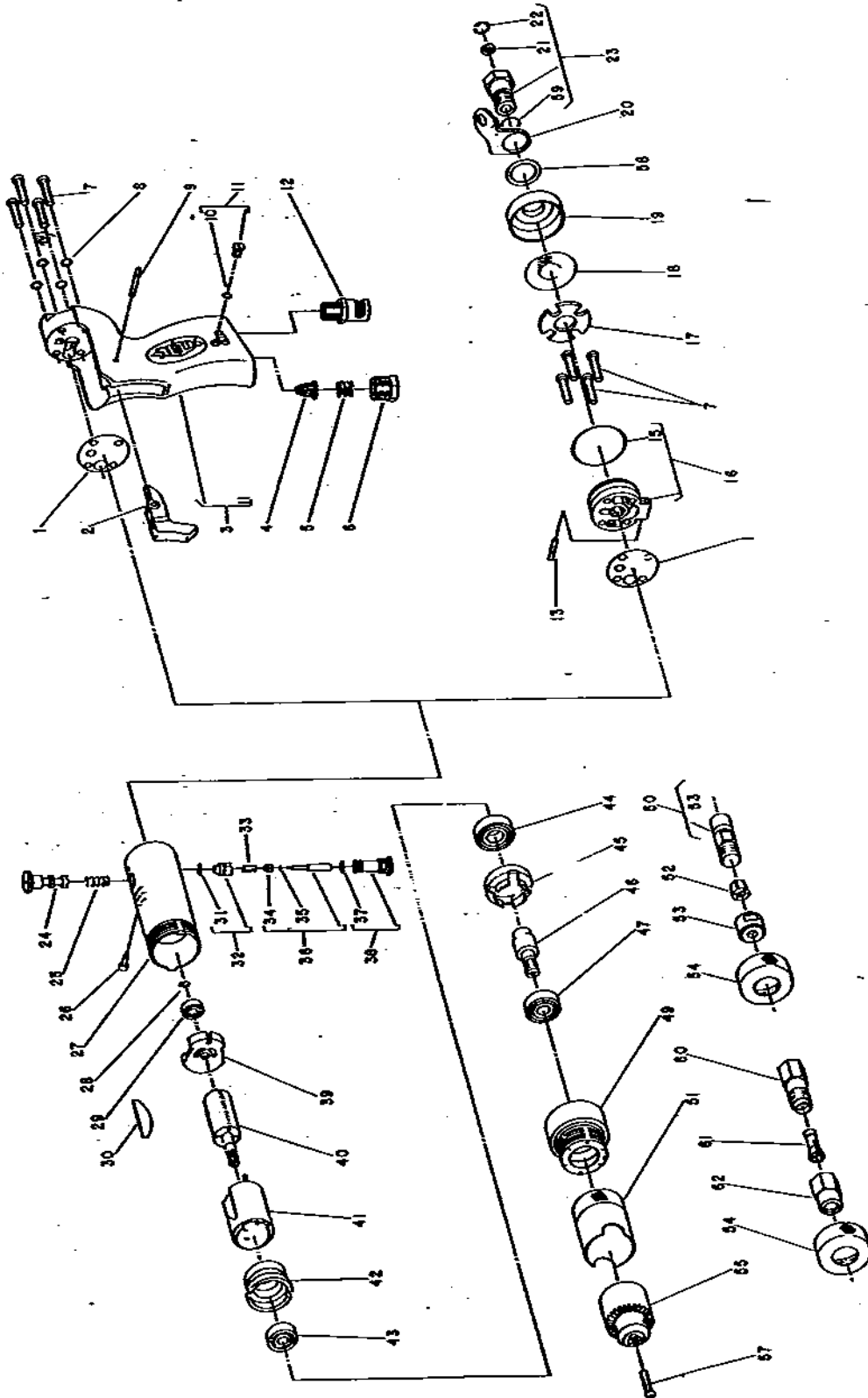
**The manual will continue on the next page.**



# Parts List for No's. L1910, L1940, L2910, P1910, P1940 & P2910 HIGH SPEED AIR GRINDER

Form A172F  
Dated 6/80  
E.D. 8/80

[Ser. No's. Starting With "J", "K" & "L"]



Furnish Catalog, Serial and Model Number When Ordering Parts

# Parts List for No's. L1910, L1940, L2910, P1910, P1940 & P2910 HIGH SPEED AIR GRINDER

[Serial Starting With "J", "K" & "L"]

Fig- ure	Part No.	Name
1.	14734	Gasket
2.	33599	Trigger
3.	33602	Handle
4.	33993	Screen—Air
5.	21417	Spring
6.	44100	Bushing
7.	07140	Screw (4)
8.	09724	Washer—Lock (4)
9.	30251	Pin
10.	14369	Ring—"O"
11.	43553	Assy.—Oiler Screw & "O" Ring
12.	43543	Assy.—Silencer
13.	30362	Pin—Roll
14.	25988	Lever
15.	14313	Ring—"O"
16.	53945	Assy.—End Cap & "O" Ring (Incl. Fig. 23)
17.	14764	Felt
18.	30470	Screen
19.	14125	Deflector
20.	35192	Bail
21.	30463	Screen
22.	21541	Ring—Retainer
23.	43154	Assy.—Adaptor & Screen (Ser. No's. Up To "K")
	53942	Assy.—Adaptor & Screen (Incl. Fig. 59) (Ser. "K")
24.	44426	Spool—Valve (Rev. Only) (Non Locking)
	44316	Spool—Valve (Rev. Only) (Locking)
25.	21427	Spring (Rev. Only)
26.	06502	Screw—Retaining (Rev. Only)
27.	43456	Housing (Reversible)
	44666	Housing (Single Rotation, Right Hand)
28.	21491	Ring—Retaining
29.	10230	Bearing—Ball
30.	33737	Vane—Rotor (Set of 4)
31.	14394	Ring—"O"
32.	43457	Assy.—Speed Control & "O" Ring
33.	21429	Spring
34.	14350	Valve
35.	25957	Washer

Fig- ure	Part No.	Name
36.	43462	Assy.—Valve
37.	14291	Ring—"O"
38.	43508	Assy.—Valve Seat & "O" Ring
39.	13161	Plate—Upper End
40.	44511	Rotor (Reversible)
	44513	Rotor (Single Rotation, Right Hand)
41.	33738	Assy.—Cylinder & Pins (L2910 & P2910)
	33740	Assy.—Cylinder & Pins (L1910, L1940, P1910 & P1940)
42.	13173	Plate—Lower End
43.	10220	Bearing—Ball
44.	10239	Bearing—Ball
45.	44089	Spacer
46.	44090	Spindle—Chuck (L1910, L2910, P1910 & P2910)
	54525	Spindle—Chuck (L1940 & P1940)
47.	10240	Bearing—Ball
49.	54424	Case—Gear
50.	21086	Assy.—Collet Chuck & Nut (L1940, P1940) (Up to Ser. "L")
	30445	Wrench—1/2" Open End
	30446	Wrench—5/8" Open End
51.	44091	Shield—Chuck
52.	21087	Collet—.198"-.250" (L1940, P1940) (Up to Ser. "L")
	21088	Collet—.146"-.198" (L1940, P1940) (Up to Ser. "L")
	21089	Collet—.094"-.146" (L1940, P1940) (Up to Ser. "L")
53.	21093	Nut—Collet (L1940, P1940) (Up To Ser. "L")
54.	44171	Ring—Grip (L1940)
55.	21077	Chuck
	30000	Key—Chuck
57.	06602	Screw
58.	35260	Washer
59.	14312	Ring—"O"
60.	21096	Body—Collet (L1940 & P1940) (Ser. "L")
61.	44440	Collet—1/4" (L1940 & P1940) (Ser. "L")
	44523	Collet—3/16" (L1940 & P1940) (Ser. "L")
	44522	Collet—1/8" (L1940 & P1940) (Ser. "L")
62.	21097	Nut—Collet (L1940 & P1940) (Ser. "L")
	30465	Wrench—9/16" Open End (Ser. "L")
	30466	Wrench—11/16" Open End (Ser. "L")
<b>COMPLETE HANDLE ASSY.</b>		
	33637	Assy.—Pistol Handle Complete
	43464	Assy.—Lever Handle Complete

Furnish Catalog, Serial and Model Number When Ordering Parts

## SIoux TOOLS INC.

2901 FLOYD BOULEVARD ■ SIOUX CITY, IOWA 51102 ■

PRINTED IN U.S.A.

This pdf incorporates the following model numbers:

L1910, L1940, L2910, P1910, P1940, P2910