



**NOTE: Parts are no longer available for this tool.**

**The manual will continue on the next page.**

**SIoux****TOOLS**

Parts List for No's. L1910, L1940, L2910,  
P1910, P1940 & P2910  
High Speed Air Grinder  
(SERIAL "H" UP TO SERIAL "J")

Furnish Catalog, Serial and Model Number When Ordering Parts

Fig- ure	Part No.	Name	Fig- ure	Part No.	Name
1	14734	Gasket	35	25957	Washer
2	33599	Trigger	36	43462	Assy.—Valve
3	33602	Handle	37	14291	Ring—"O"
4	33993	Screen—Air	38	43508	Assy.—Valve Seat & "O" Ring
5	21417	Spring	39	13161	Plate—Upper End
6	44100	Bushing	40	44511	Rotor (Reversible)
7	07140	Screw (4)		44513	Rotor (Single Rotation, Right Hand)
8	09724	Washer—Lock (4)			
9	30251	Pin	41	33738	Assy.—Cylinder & Pins (L2910 & P2910)
10	14369	Ring—"O"		33740	Assy.—Cylinder & Pins (L1910, L1940, P1910 & P1940)
11	43553	Assy.—Oiler Screw & "O" Ring			
12	43543	Assy.—Silencer	42	13173	Plate—Lower End
13	30362	Pin—Roll	43	10220	Bearing—Ball
14	25988	Lever	44	10239	Bearing—Ball
15	14313	Ring—"O"	45	44089	Spacer
16	43504	Assy.—End Cap & "O" Ring	46	44090	Spindle—Chuck
17	14764	Felt	47	10240	Bearing—Ball
18	30470	Screen	48	44857	Ring—Lock
19	14125	Deflector	49	54255	Case—Gear
20	35192	Bail	50	21086	Assy.—Collet Chuck & Nut (L1940, P1940)
21	30463	Screen			
22	21541	Ring—Retainer	51	44091	Shield—Chuck
23	43154	Assy.—Adaptor & Screen	52	21087	Collet—.198"-.250" (L1940, P1940)
24	44426	Spool—Valve (Rev. Only) (Non Locking)		21088	Collet—.146"-.198" (L1940, P1940)
	44316	Spool—Valve (Rev. Only) (Locking)		21089	Collet—.094"-.146" (L1940, P1940)
25	21427	Spring (Rev. Only)	53	21093	Nut—Colet (1940, P1940)
26	06502	Screw—Retaining (Rev. Only)	54	44171	Ring—Grip (L1940)
27	43456	Housing (Reversible)	55	21077	Chuck
	44666	Housing (Single Rotation, Right Hand)		30000	Key—Chuck
28	21491	Ring—Retaining	57	06602	Screw
29	10230	Bearing—Ball	58	35260	Washer
30	33737	Vane—Rotor (Set of 4)		30445	Wrench—1/2" Open End
31	14394	Ring—"O"		30446	Wrench—5/8" Open End
32	43457	Assy.—Speed Control & "O" Ring			
33	21429	Spring			
34	14350	Valve			
					COMPLETE HANDLE ASSY.
				33637	Assy.—Pistol Handle Complete
				43464	Assy.—Lever Handle Complete

**SIoux TOOLS INC.**

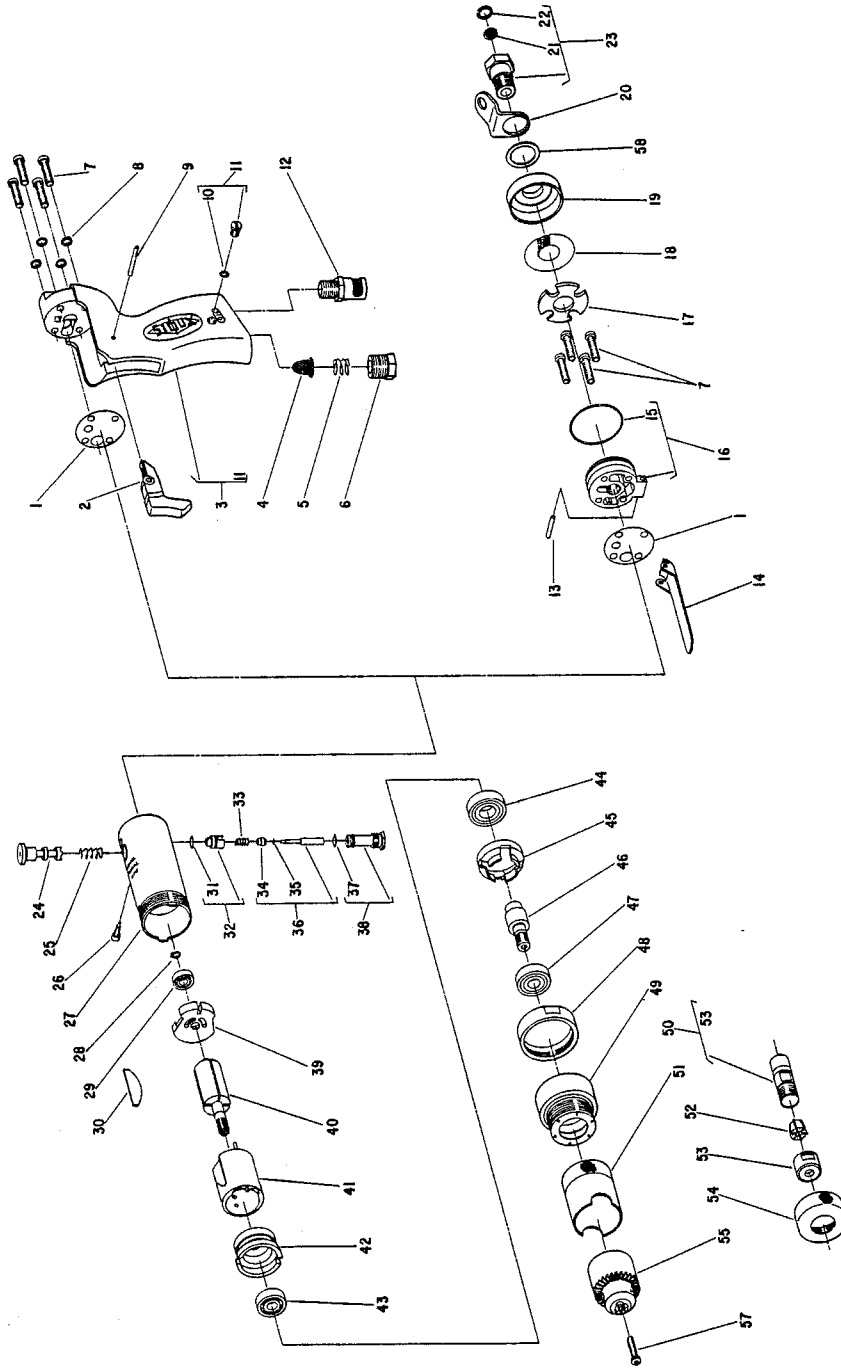
SIoux CITY, IOWA, U.S.A. 51102

# SIoux



# TOOLS

## Parts List for No's. L1910, L1940, L2910, P1910, P1940 & P2910 High Speed Air Grinder (SERIAL "H" UP TO SERIAL "J")



Furnish Catalog, Serial and Model Number When Ordering Parts

This pdf incorporates the following model numbers:

L1910, L1940, L2910, P1910, P1940, P2910