



NOTE: Parts are no longer available for this tool.

The manual will continue on the next page.

SIoux**TOOLS**

Parts List for No's. L1910, L1940, L2910,
P1910, P1940 & P2910
High Speed Air Grinder

(SERIAL 15101 UP TO "H")

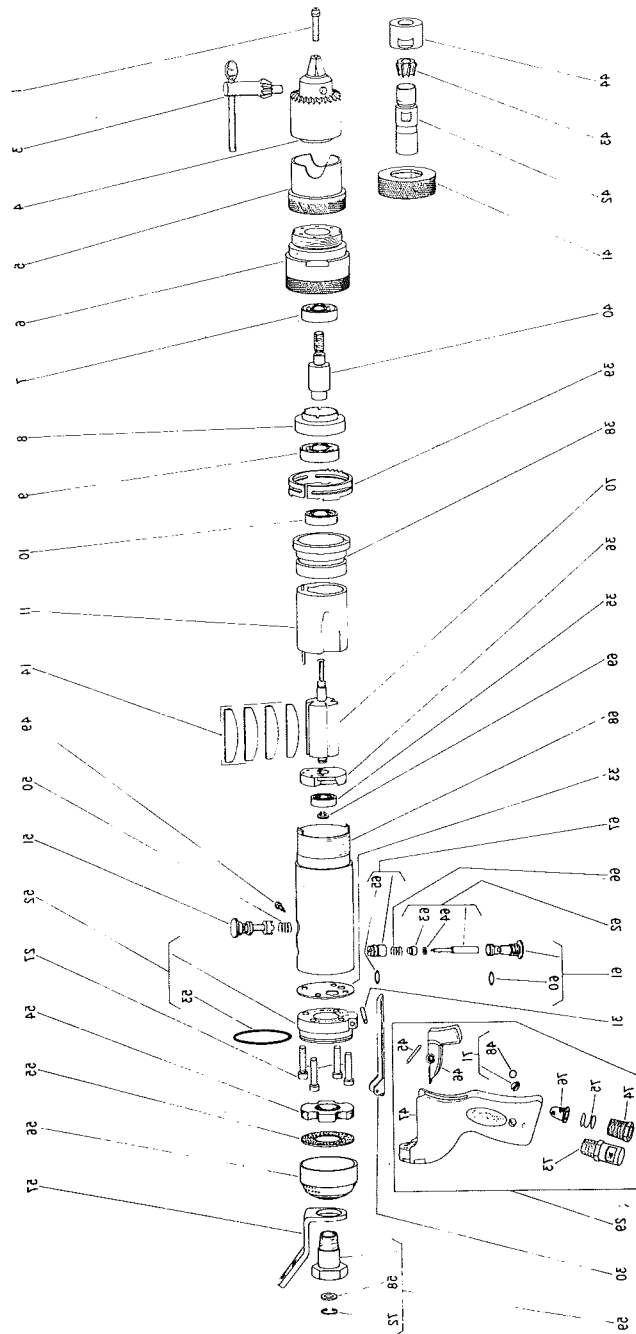
Furnish Catalog, Serial and Model Number When Ordering Parts

Fig- ure	Part No.	Name	Fig- ure	Part No.	Name
1	06602	Screw #8	47	33602	Handle
3	30000	Key—Chuck	48	14369	Ring—"O"
4	21077	Chuck	49	06502	Screw—Retaining (Rev. Only)
5	44091	Shield—Chuck	50	21427	Spring (Rev. Only)
6	44093	Case—Gear	51	44316	Spool—Valve (Rev. Only)
7	10240	Bearing—Ball	52	43504	Ass'm.—End Cap & "O" Ring
8	44089	Spacer	53	14313	Ring—"O"
9	10239	Bearing—Ball	54	14764	Felt
10	10220	Bearing—Ball	55	30470	Screen
11	33738	Ass'm.—Cylinder & Pins (L2910- P2910)	56	44538	Deflector
	33740	Ass'm.—Cylinder & Pins (L1910- L1940-P1910-P1940)	57	35192	Bail
14	33737	Vane—Rotor (Set of 4)	58	30463	Screen
27	07140	Screw #10 (4)	59	43154	Adaptor
29	33637	Ass'm.—Pistol Handle Complete	60	14291	Ring—"O"
30	25988	Lever—Valve	61	43508	Ass'm.—Valve Seat & "O" Ring
31	30362	Pin—Roll	62	43462	Ass'm.—Valve
33	14734	Gasket	63	14350	Valve
35	10230	Bearing—Ball	64	25957	Washer
36	13161	Plate—Upper End	65	14394	Ring—"O"
38	13173	Plate—Lower End	66	21429	Spring
39	21505	Ring—Lock	67	43457	Ass'm.—Speed Control & "O" Ring
40	44090	Spindle—Chuck	68	43456	Housing (Reversible)
41	44171	Ring—Grip (L1940)		44666	Housing (Single Rotation, Right Hand)
42	21086	Ass'm.—Collet Chuck & Nut (Incls. Fig. 44) (L1940- P1940)	69	21491	Ring—Retaining
43	21087	Collet—.198"—.250" (L1940- P1940)	70	44511	Rotor (Reversible)
	21088	Collet—.146"—.198" (L1940- P1940)		44513	Rotor (Single Rotation, Right Hand)
	21089	Collet—.094"—.146" (L1940- P1940)	71	43553	Ass'm.—Oiler Screw & "O" Ring
44	21093	Nut—Collet (L1940-P1940)	72	21541	Ring—Retainer
45	30251	Pin—Groove		30445	Wrench—1/2" Open End
46	33599	Trigger		30446	Wrench—5/8" Open End
			73	43543	Ass'm.—Silencer
			74	44100	Bushing
			75	21417	Spring
			76	33993	Screen—Air

SIoux TOOLS INC.
SIoux CITY, IOWA, U.S.A. 51102

Parts List for No's. L1910, L1940, L2910,
P1910, P1940 & P2910
High Speed Air Grinder

(SERIAL 15101 UP TO "H")



Furnish Catalog, Serial and Model Number When Ordering Parts

This pdf incorporates the following model numbers:

L1910, L1940, L2910, P1910, P1940, P2910