



NOTE: Parts are no longer available for this tool.

The manual will continue on the next page.

SIoux**TOOLS**

Parts List for No's. L1910, L1940, L2910,
P1910, P1940 & P2910
High Speed Air Grinder
(UP TO SERIAL 15100)

Furnish Catalog, Serial and Model Number When Ordering Parts

Fig- Part ure No.	Name	Fig- Part ure No.	Name
1	06602 Screw #8	25	30312 Plug—Pipe
3	30000 Key—Chuck	27	07140 Screw #10 (4)
4	21007 Chuck	28	21384 Bail
5	44091 Shield—Chuck	29	33637 Ass'm.—Pistol Handle Complete
6	44093 Case—Gear	30	25988 Lever—Valve
7	10240 Bearing—Ball	31	30293 Pin—Roll
8	44089 Spacer	32	21501 Ring—Retaining
9	10239 Bearing—Ball	33	14734 Gasket
10	10220 Bearing—Ball	34	33600 Ass'm.—Housing & Sleeve
11	33738 Ass'm.—Cylinder & Pins (L2910- P2910)	35	10230 Bearing—Ball
	33740 Ass'm.—Cylinder & Pins (L1910- L1940-P1910-P1940)	36	13161 Plate—Upper End
12	34819 Pin	37	34923 Rotor (L2910-P2910)
13	30394 Pin		34944 Rotor (L1910-L1940-P1910- P1940)
14	33737 Vane—Rotor (Set of 4)	38	13173 Plate—Lower End
15	33627 Ass'm.—Valve (L2910-P2910)	39	21505 Ring—Lock
	33629 Ass'm.—Valve (L1910-L1940- P1910-P1940)	40	44090 Spindle—Chuck
16	14308 Ring—"O"	41	44171 Ring—Grip
17	13159 Control—Speed	42	21086 Ass'm.—Collet Chuck & Nut
18	21372 Spring—Throttle Valve	43	21087 Collet—.198" - .250"
19	33557 Plunger—Valve		21088 Collet—.146" - .198"
20	30339 Pin—Roll (L1910-L1940-P1910- P1940-2) (L2910-1-P2910-1)		21089 Collet—.094" - .146"
21	30338 Pin—Roll	44	21093 Nut—Collet
22	33742 Ass'm.—Valve Seat	45	30251 Pin—Groove
	33743 Seat—Valve (L1910-L1940- P1910-P1940)	46	33599 Trigger
23	14389 Ring—"O" (3)	47	33602 Handle
24	12247 Cap—End		20282 Plate—Name
			06000 Screw #2 (2)
			30445 Wrench—1/2" Open End
			30446 Wrench—5/8" Open End

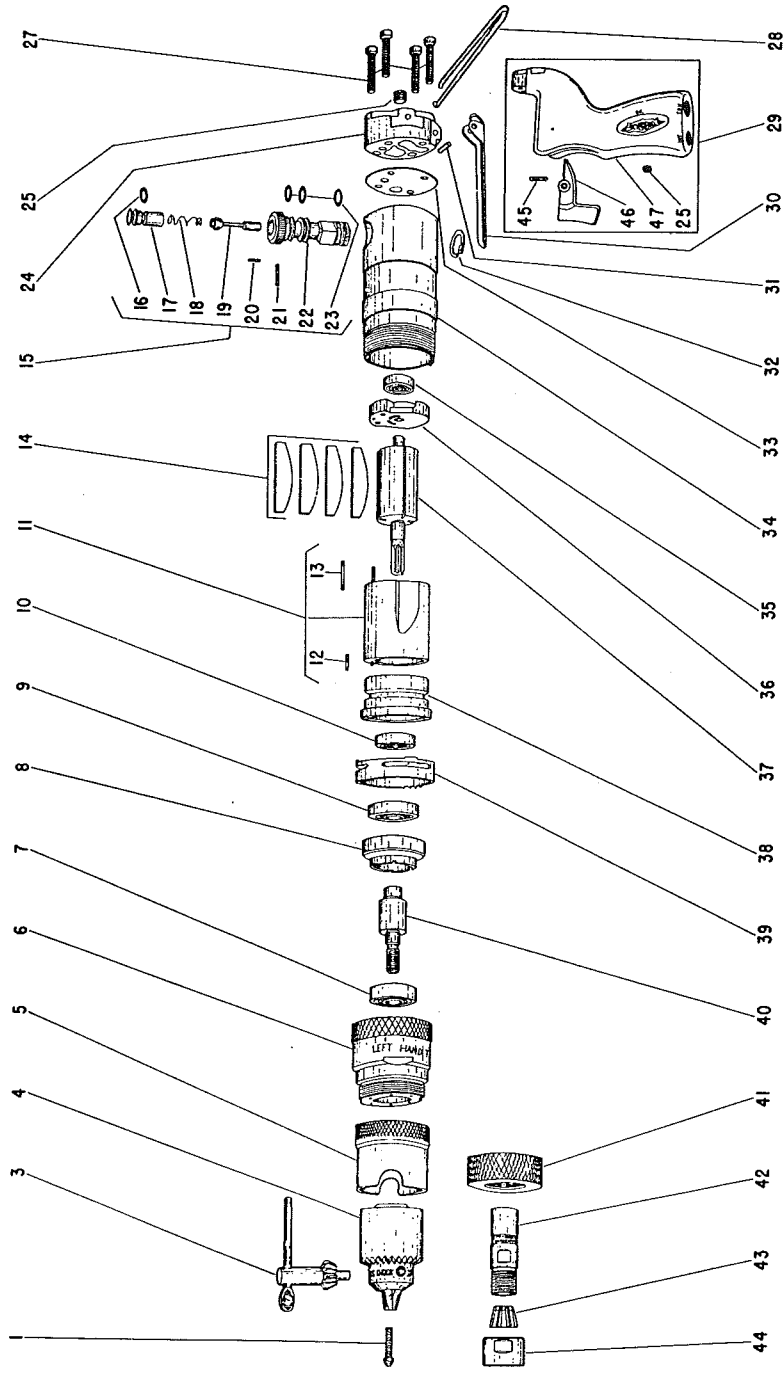
SIoux TOOLS INC.
SIoux CITY, IOWA, U.S.A. 51102

SIoux



TOOLS

Parts List for No's. L1910, L1940, L2910,
P1910, P1940 & P2910
High Speed Air Grinder
(UP TO SERIAL 15100)



Furnish Catalog, Serial and Model Number When Ordering Parts

This pdf incorporates the following model numbers:

L1910, L1940, L2910, P1910, P1940, P2910